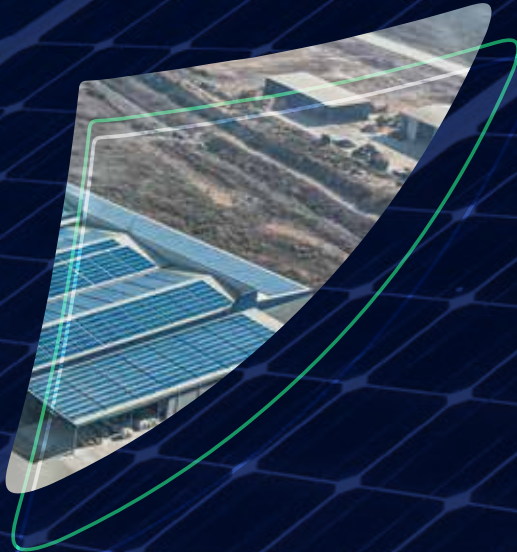


# 2020 / Q2 COMPANY PRESENTATION



[www.goktekinenerji.com](http://www.goktekinenerji.com)



**Göktekin  
Enerji**

Infinite energy of Turkey



# We reflect the sun's energy to Life

In fact, it's the life itself that is reflected from these panels.

It's a production of our industrialists that will challenge the world...

It's an abundance for our farmer's field that will increase every year...

Dream of a clean future for our children and grandchildren...

That's why we reflect the sun's endless energy to life.

And every day, when the sun rises, we see a stronger Turkey.

Because for us, looking at the sun is envisaging the future.

# GÖKTEKİNGROUP

## HISTORY

Although Göktekin Enerji has no financial or commercial ties in terms of capital, Göktekin Dış Ticaret, the first flagship company of the family started its activities in 1979 by merchandising white commodity and small home appliances manufactured under the brand name **GOSONIC®** domestically and abroad.

After starting exporting in 1988, the company ceased all of its domestic operations in 2001. Subsequently, the company has focused totally on exportation and become one of the most trusted white commodity brands in the Middle East region including mainly Iran and Iraq markets. With an average annual export volume mounting to 100 million USD, the company has become the leading brand in those markets owing to its broad product range, and widespread dealer and service network.

The founder of our company Abdullah Göktekin studied International Trade Management and Business Administration at two universities in the United States and then started his own business in that country. In 2014, he went to Erbil to work as Iraq **GOSONIC®** Country Manager. After working in this position for 1.5 years, Abdullah Göktekin left his position in Göktekin Dış Ticaret company in 2015 and joined the newly established Göktekin Energy company.



**GOSONIC®**

[gosonic.com.tr](http://gosonic.com.tr)

**Göktekin**  
iz bırakan dokunuşlar

[goktekin.com.tr](http://goktekin.com.tr)



**Göktekin  
Enerji**

Infinite energy of Turkey

[goktekinenerji.com](http://goktekinenerji.com)

GÖKTEKİN ENERJİ

# FROM THE PAST TO TODAY

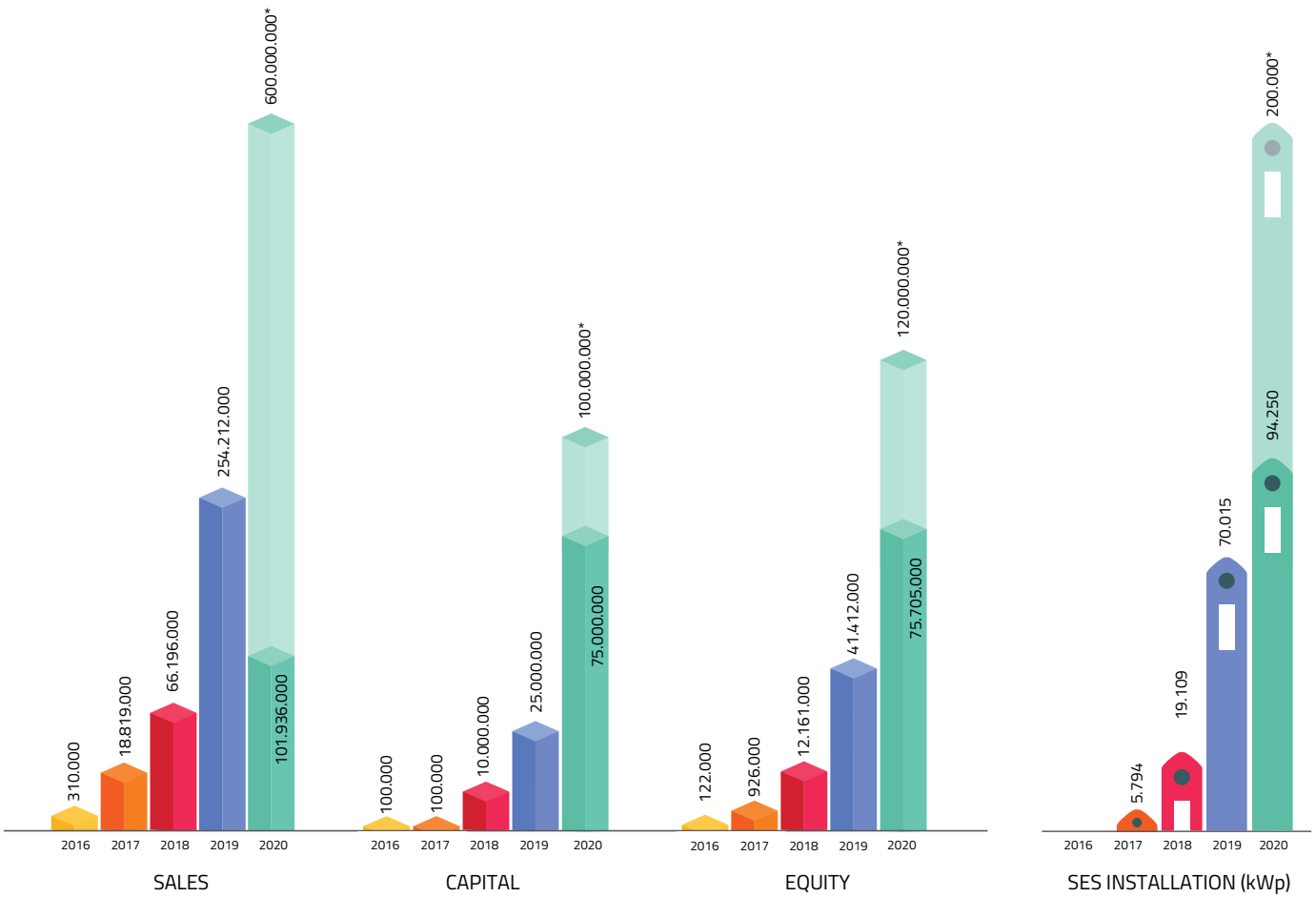
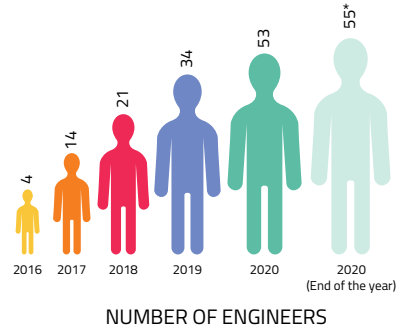
**G**öktekin Enerji is an engineering company established in 2015 for the purpose of providing EPC (Engineering, Procurement & Construction) service. Spending 2016 as a preparation period in accordance with our long-term strategies, our company obtained ISO 9001, ISO 14001 and OHSAS 18001 certificates in this period, established its technical and administrative substructure, and completed all trainings on Solar Energy Systems which were very new to Turkey. In addition, being granted the EVD (Energy Efficiency Consultant) certificate, which, in our country, only 28 companies, who were trained and authorized by the Ministry of Energy and Natural Resources, were able to have, it was entitled to be the only EPC company in Turkey that had EVD certificate. In addition to all these, our company that started AR-GE works as a company yet to turn 1 year old, realized Cleaning Robot and Remote Monitoring software projects. Our company started its EPC operations in 2017, and completed the Konya Kulu SPP project of 4.725 kWp to realize its first work. With the installation of the SPP of 1,069 kWp for the Afyon Gazlıgöl Municipality it completed under the sponsorship of the İller Bankası within the same year, it finalized the installation of the power plants of approximately 6 MW in 2017. In 2018, completing the SPP projects of 2MW in Acıgöl and 6.5 MW in Saray/Yozgat, by means entirely of its own sources, it achieved to the position of an investor in the sector. Within the same year, it accomplished 6 large and small projects, and closed

the year with the installation of 13 MW in total. Moreover, in 2018, our company acquired the distributorship of the SolarEdge Company, the leading inverter company in SPP market in the EU and US, and started to operate in the area of commercial product sales.

In 2019, with the goal of growing our investments, we carried out the installations of the power plants of 13.700 kWp in Başkale/Van, of 12.414 kWp in Kesentaş/Diyarbakır, and of 11.600 kWp Osmaniye/Adana, extending our portfolio to the installed power of over 50 MW. In May 2019, foreseeing, upon the issuance Regulation on Self Consumption, that the roof SPP market would grow very fast, we integrated the organizational structure of our company to new market conditions, and, establishing regions to cover entire Turkey, opened our İstanbul office. The Samsun Yeşil Küre Solar Power Plant, which, when introduced, was the biggest roof top SPP project in Turkey, was undertaken as a turnkey project that included roof and building fortification works. Within the same period, our other 3 roof top SPP projects were completed, and our 13 roof top projects of over 50 MW in total are continuing simultaneously.

Despite the fact that we spent almost the first half of 2020 under Covid-19 restrictions, we completed total of 8 rooftop projects of 17 MWp in power. With the Ağrı Suçatağı project of 8 MWp in power we completed within the same period, we increased our SPP investments to 26 MW. And presently, our 3 land type SPP investments of 38 MW installed power, one of which is licensed, is continuing. In addition, we have added the solar panels of Hanwha and HT-SAAE brands to the products we distribute. As we day by day increase the concentration of our rooftop SPP applications, we presently have 15 rooftop SPP projects of 30 MWp in power continuing in 9 different provinces of Turkey.

# GÖKTEKİN ENERJİ IN NUMBERS



(\*) Year-end target figures

\* Copyright 2015 Göktekin Enerji A.Ş. Copyrights of this document are owned by Göktekin Enerji A.Ş. All rights reserved. No part of this document or the information it contains cannot be copied, sent, processed, or recorded in any form, or disclosed to third parties by electronic, mechanical, photographic or other means without prior written consent of Göktekin Enerji A.Ş.



## Dear Friends of the Sun,

Following the oil crisis experienced in 70's, the importance of energy was better understood by all world countries. Post this crisis, countries started to take important steps regarding diversifying their energy sources and using alternative energies. Particularly the countries importing energy were focused on sustainable use of energy. As the 2000s arrived, works on the renewable energy in the world accelerated, and rapid developments were observed along with the advancing technology. Countries are seen to attach a particular importance to the use of solar energy as, particularly, the solar energy is one of the most commonly found sources on earth. Many governments, including Turkey, have developed many important legal regulations and incentive mechanisms in favor of generating electricity from solar energy.

According to the data from International Renewable Energy Agency, the use of solar energy has now reached the installed power of 583.500 MW worldwide, and of 6.232 in our country. Although the history of the solar energy in our country goes back to 70's, a substantial development trend was started in 2015, which we may consider as a milestone, and moreover, Turkey achieved the success of being the country that established the most number of solar power plants (SPP) in 2017 compared to European countries. I witnessed, during my period of education in 2009-2014 in the United States, that how important the solar energy was, primarily in domestic installations, regarding the industrial development and economic growth of the country.

When I returned to Turkey, I noticed that, our industrialists, who were, as of then, able to compete with world brands both in international area and within the country, sought for alternatives to reduce their energy costs and increase their power. Then, in 2015, foreseeing that the renewable energy would be of vital importance for our country in the coming years, I founded the Göktekin Energy. Göktekin Enerji is an engineering company that provides EPC (Engineering, Procurement & Construction) services. Our company spent 2016 as a preparation period in accordance with our medium- and long-term strategies, and, setting up its technical and administrative substructure, completed all required certification processes. Acting on the basis of the principle of Efficiency in Energy Generation, our company is the only EPC Company that has the Energy Efficiency Consultant (EEC) certificate granted by the Ministry of Energy and Natural Resources.

With the Regulation on Self-Consumption issued in 2019 in our country, the way has been cleared for the roof top SPP investments. I believe that, thank to this, solar energy market will turn to an approximately \$10 billion market. The market is expected to even more grow with the gradual introduction of hybrid power plants. Having realized more than 100 SPP projects reaching, in total, over 150 MW installed power, our company has put our own investment solar power plants of over 50 MW into use in different provinces to reduce the external energy dependence of our country. In addition to this, we, within our medium-term plans, along with our SPP installations, consider to make the first turbine of our wind power plant (WPP) investment of over 50 MW ready for YAKDEM (Renewable Energy Sources Support Mechanism), and put it into use in 2021. Following that, adding 95 MW more to extend our WPP project to 145 MW, and, with addition 50 MW Hybrid SPP to this, we wish to be the investor of 200 MW WPP and SPP hybrid power plant in one area.

We analyzed that, the main factor, except for technological developments, of the rapid growth of the renewable energy sector in Europe and the United States was to create correct financing solutions. Accordingly, it was essential for us to support our industrialists in accessing long-term and cheap finance in their roof SPP investments. For this, we provide financial consultancy customers, and help them to find strong financial solutions through the powerful banks of our country. With the development, and gradually becoming cheaper, of the technologies used in solar energy area, SPP has now become a profit generating investment that pay off in a very short time.

Energy import has the greatest share in the foreign trade deficit of our country. One of the most important factors for us to found Göktekin Enerji is to reduce the external energy dependence of our country, and ensure our industrialists to produce their own energy and to increase their competitive power on international platforms. Also another reason for the importance and devotion to our business is to be able to ensure a better and cleaner future for our country and even for the world.

I believe that we will be a stronger Turkey as the use of the Sun, a clean, indefinite, riskless and free energy source, in our country increases.

**Abdullah GÖKTEKİN**  
*Chairman of The Board*





**Burak BAYCIK**  
*CFO-Chief Financial Officer*

Analyzing the reasons for the success Göktekin Enerji achieved in a short time, I can say that, along with our highly important values such as senior management approach, qualified staff and team work, our way of doing business that centers the customer is a very important factor. Basically, we have two types of customers, and both these customer segments have different expectations. Our type first customers are the Land Type SPP investors, who, among various investment tools, wish to add SPP investments in their portfolios. And the second type customers are the Roof Type SPP customers who want to maximize the pursuit of efficiency.

We show a correct approach to our investor customers, and explain them in details the advantages of SPP relative to other investment tools in technical and financial respect, then we set up the systems through which they will be able to measure their financial gains correctly. In the end, the basic wish of our investors is to see that the SPP investments, which, compared to other investment tools, look relatively good on paper, are also achievable in real life. The feedbacks we receive in this regard show us that we are on the right track.

Roof Type SPP, on the other hand, has walked into our focus from the second half 2019 never to walk out again. The most important anticipation of this customer segment is to make an investment that pays off in a short time at an optimum price and finance possibilities. Within this scope, we well identified our predictable sales volume, and, with the advantage of our strong equity capital, gained a price advantage through framework agreements utilizing the scale economy for many auxiliary materials particularly for PV module, the most expensive equipment of the system. These agreements allowed us to offer better prices to our customers compared to our competitors. Secondly, we signed cooperation protocols with "İş", "QNB Finans" and "Garanti" leasing companies as reliable and qualified executors. Within the scope of this cooperation, we make the leasing company gain new customers while ensuring our customers to access the finance specially designed for us with suitable maturities and interest rates.

As long as we are able to properly adapt our customer-centric business method to our new and highly dynamic sector, I am sure that we will be much more competitive, leading the most distinguished players in the day-to-day developing solar energy sector.



**Sercan METİN**  
*Technical Affairs Director*

#### **The Sun, the oldest known energy source of human...**

Solar energy, which Socrates, the Ancient Greek Philosopher, first started use thereof during 400 B.C. by putting windows in the south facing walls of the houses, has now, after 2400 years, gone up to the roofs of our houses.

While around the world the PV Solar sector is developing towards lands starting from the residence or commercial building roofs, it is yet, in an exact opposite direction, in the stage of passing from lands, from which it gathered speed, to roofs. With this transition, it also allowed the investor profile to evolve to industrialists, and ensured the participation of technical staff, who master energy investment, in the process. This development has given rise to the necessity of performing technically even more perfect works as well as forcing the companies in the sector to reduce their costs.

In a SPP project, material costs comprise the major part of the investment cost. The details in the labor expenses, which comprise the minor part of the investment, are as much important as the quality of the materials to be used in systems aimed to function for decades. All companies may procure products of same quality, but they may not be able to provide the workmanship of the same quality.

#### **"Life is 'badly' like football... No matter how talented you are, you lose if you don't have a good team..."**

Experience is the accumulation of knowledge acquired by repeating the same work. Success, on the other hand, is to be able to gain experience by internalizing the disciplines that will provide improvement in repeated work within the organization.

Within 3 years from 2017, when we made a rapid entry into the sector, all our colleagues have reflected their experiences they gained in their previous business lives by means of the in-house and external trainings provided by our company on the sector, thus the work of over 100 MW was completed successfully within this period.

One of the most common mistakes made in the organizations that employ technical staff is to expect every employee to have knowledge on every subject and choose to implement a configuration accordingly. The fact that we advocate, from the day first, the rightness of branching out on technical issues is maybe the basic key for us in running altogether to success as a good team with members who are expert on their areas.

#### **Confidence is not an obstacle to control...**

In technical works, the counterpart of operational blindness is lack of attention. Although we improve ourselves by every work, within the available work plan, many works have the same routine, and our technical staff may experience lack of attention.

As a company that aims at perfectness, we control our each project by 3 different organizational structures not to experience the said problem. In the manufacturing process, our company carries out business and process controls by internal quality control specialists and independent auditing companies. While for each project a full time quality control officer is assigned by our headquarters, we also receive independent auditing service from the best known companies in the sector again in the same process. Lastly, we have the quality of the service we offer to our customers approved also by international agencies by obtaining a TÜV certificate for all of our facilities built in compliance with all international standards and finished with a complete and cross control.

#### **"One of the best ways of time saving is to pre-consider and plan. Five minutes of consideration ensures one hour of labor saving."**

Our belief in the fact that our sector will grow even more with each passing year encourages us to do our work more correctly and perfectly. We will continue to do the perfect work, always keeping in mind that only correctly planned, designed and implemented facilities may encourage our investors for bigger projects...

# FUNCTIONAL AREAS

## GÖKTEKİN ENERJİ



### Turn-key SPP Implementation (A to Z Business Process Management)

-  Investment and Process Consultancy
-  Consumption Analysis Report
-  Exploration of Application Site
-  Production Simulations
-  Investment Feasibility
-  Permissions and Bureaucratic Process Management
-  Project Design
-  Optimal Product Supply
-  Application and Montage
-  Testing, Commissioning and Acceptance Procedures
-  After Sales Services -Maintenance and Management
-  Monitoring (Performance Monitoring)

### EEC (Energy Efficiency Consultancy)

- Preliminary Study
- Detailed Study
- Project Design for Improved Efficiency
- Energy Management

### Commercial Product Sales

- Turkey Distributorship for HT-SAAE Solar Panels
- Turkey Distributorship for Solaredge Invertors

### Maintenance | Business Management Services



\* Copyright 2015 Göktekin Enerji A.Ş. Copyrights of this document are owned by Göktekin Enerji A.Ş. All rights reserved. No part of this document or the information it contains cannot be copied, sent, processed, or recorded in any form, or disclosed to third parties by electronic, mechanical, photographic or other means without prior written consent of Göktekin Enerji A.Ş.



# WHY GÖKTEKİN ENERJİ?



Experience in turn-key rooftop and land-based SPP installations over 150 MW



Individually owned SPP investments over 40MW



First and only SPP company (EPC) certified by the Ministry of Energy and Natural Resources with Energy Efficiency Consultancy (EEC) certificate



Expert staff with experience in their fields



Optimal product selection and procurement



Performance guarantee in production



“Independent Technical Consultant Inspections” during PV installation



Guaranteed and certified to meet **TÜV NORD** standards



Outstanding A-to-Z process management including roof and building reinforcement offered by Göktekin Yapı



All Risk Montage Insurance throughout installation



Occupational Health and Safety at high standards



Services provided for 2 years after application:

- Around-the-clock production surveillance and performance monitoring
- Quick and effective response process
- Periodical maintenance and tests
- Monthly production and performance reporting

\* Copyright 2015 Göktekin Enerji A.Ş. Copyrights of this document are owned by Göktekin Enerji A.Ş. All rights reserved. No part of this document or the information it contains cannot be copied, sent, processed, or recorded in any form, or disclosed to third parties by electronic, mechanical, photographic or other means without prior written consent of Göktekin Enerji A.Ş.

# GÖKTEKİN ENERJİ

## FINANCING SOLUTIONS

WE ARE HERE TO OFFER YOU EASY PAYMENT OPTIONS AND LEASING SOLUTIONS IF YOU DECIDE TO INVEST IN SOLAR ENERGY STATIONS

**F**inancial strength of each company is different. For this reason, some of them can readily access to finance and others cannot. We have very close relationships with about 10 finance companies that are willing to and actually finance SPP investments for self-consumption. We are in the "whitelist" in all of these companies and therefore, we work as an accredited solution partner. Thus, when an investor decides to realize their investment with us, financial entities consider the implementation risk as very low.

Among these financial entities, we have signed a collaboration protocol with İş Leasing and QNB Finans Leasing. An individual investor allocates his capital to an investment once but since we are constantly directing projects to finance companies, they can offer us affordable pricing.

### Göktekin Enerji - İş Leasing Strategic Partnership Protocol



*Abdullah Göktekin*  
Göktekin Enerji Chairman of The Board

*Mehmet Karakılıç*  
İş Leasing Director

## Göktekin Enerji - QNB Leasing Strategic Partnership Protocol



*Metin Karabiber  
QNB Leasing Director*

*Abdullah Göktekin  
Göktekin Enerji Chairman of The Board*

As we have more comprehensive knowledge of business than investors, we are able to monitor the credit process for the investor company. Along with the feasibility study, we negotiate the investment loan/equity ratios with the financial entities on behalf of the companies. This provides operational convenience for companies.

Moreover, we support investors in accessing inexpensive financing thanks to our relations with institutions such as KGF, Eximbank and Turseff that offer relatively lower interest rates for financing renewable energy sources.

*“Be a SPP owner through our financial solutions and pay it back like you’re paying your electric bill”*

©Copyright 2015 Göktekin Enerji A.Ş. Copyrights of this document are owned by Göktekin Enerji A.Ş. All rights reserved. No part of this document or the information it contains cannot be copied, sent, processed, or recorded in any form, or disclosed to third parties by electronic, mechanical, photographic or other means without prior written consent of Göktekin Enerji A.Ş.





## COMPLETED PROJECTS

- ▶ SAMSUN - YEŞİL KÜRE SPP - **5.183,20** kWp
- ▶ ADANA - ABDİOĞULLARI PLASTİK-8.1 SPP - **2.910,60** kWp
- ▶ ADANA - PALMIYE TEKSTİL SPP - **2.400,00** kWp
- ▶ ADANA - ABDİOĞULLARI PLASTİK-2 SPP - **1.746,36** kWp
- ▶ ADANA - ABDİOĞULLARI PLASTİK-7 SPP - **1.261,26** kWp
- ▶ KAHRAMANMARAŞ - RİMSA TEKSTİL DENİM - **1.250,48** kWp
- ▶ ADANA - ABDİOĞULLARI PLASTİK-1 SPP - **1.164,24** kWp
- ▶ ADANA - ATLAS DENİM TEKSTİL SPP - **6.225,28** kWp
- ▶ ADANA - VERİ MERKEZİ SPP - **249,60** kWp
- ▶ ANKARA - OLİMPİYAT ISI SPP - **404,25** kWp
- ▶ ADANA - ŞAHİNAĞA BERKMEN ÇATI SPP - **181,98** kWp
- ▶ ADANA - TEKFEN SPP - **47,04** kWp
- ▶ VAN - BAŞKALE SPP - **13.700,70** kWp
- ▶ DİYARBAKIR - KESENTAŞ SPP - **12.415,00** kWp
- ▶ AĞRI - SUÇATAĞI SPP - **7.020,00** kWp
- ▶ YOZGAT - SARAYKÖY SPP - **6.415,20** kWp
- ▶ OSMANİYE - DÜZİÇİ SPP - **5.799,38** kWp
- ▶ OSMANİYE - YAVERİYE SPP - **5.788,65** kWp
- ▶ KONYA - KULU DOĞUTEPE SPP - **4.722,30** kWp
- ▶ ADANA - BURUK SPP - **3.984,00** kWp
- ▶ İZMİR - KIRAZ SPP - **2.217,60** kWp
- ▶ NEVŞEHİR - KARAPINAR SPP - **2.138,40** kWp
- ▶ İZMİR - BAĞARASI SPP - **2.138,40** kWp
- ▶ AFYONKARAHİSAR - GAZLIGÖL SPP - **1.069,20** kWp
- ▶ ADANA - ÖZBALTU SPP - **249,48** kWp
- ▶ MUĞLA - ÇAVUŞ ADASI SPP - **116,64** kWp
- ▶ ADANA - TÜMEN TARIM SPP - **60,48** kWp
- ▶ ADANA - TARHAN BERKMEN SPP - **71,28** kWp
- ▶ ADANA - LMC SPP - **145,35** kWp

## ONGOING PROJECTS

- ▶▶ ADANA - BOSSA SPP - **7.033,95** kWp
- ▶▶ ADANA - ABDİOĞULLARI PLASTİK-8.2 SPP - **4.480,00** kWp
- ▶▶ KONYA - BÜROTİME - **3.107,16** kWp
- ▶▶ KAHRAMANMARAŞ - AKYILDIZ MUTFAK - **2.318,40** kWp
- ▶▶ GAZİANTEP - KEVSER HALI-1 - **2.217,60** kWp
- ▶▶ BİTLİS - GÜLBAHAR ENERJİ ÜRETİM A.Ş. ALAGES - **24.192,00** kWp (Lisanslı GES)
- ▶▶ GAZİANTEP - KEVSER HALI-2 - **2.217,60** kWp
- ▶▶ ADANA - ERBEY DOKUMA - **2.078,40** kWp
- ▶▶ ESKİŞEHİR - KAVACIK SPP - **1.600,00** kWp
- ▶▶ ERZURUM - AŞKALE SPP - **7.020,00** kWp
- ▶▶ KAYSERİ - MİLKAY TEKNİK TEKSTİL (AKELYAF) - **1.332,80** kWp
- ▶▶ NİĞDE - AKMİNA MAKİNE TEKSTİL - **1.265,60** kWp
- ▶▶ ADANA - TÜMEN TARIM - **971,20** kWp
- ▶▶ İSTANBUL - ESENYURT SPP - **447,48** kWp
- ▶▶ ADANA - KÖSEOĞLU AGRO TARIM - **436,80** kWp
- ▶▶ ADANA - ATLAS FİDE SPP - **204,80** kWp
- ▶▶ KOCAELİ - COLGATE - PALMOLİVE SPP - **98,80** kWp
- ▶▶ İZMİR - DEREKÖY SPP - **3.532,80** kWp
- ▶▶ GAZİANTEP - FLAMENT - **2.140,32** kWp

\* Copyright 2015 Göktekin Enerji A.Ş. Copyrights of this document are owned by Göktekin Enerji A.Ş. All rights reserved. No part of this document or the information it contains cannot be copied, sent, processed, or recorded in any form, or disclosed to third parties by electronic, mechanical, photographic or other means without prior written consent of Göktekin Enerji A.Ş.

# PROJECTS



\*<sup>o</sup>Copyright 2015 Göktekin Enerji A.Ş. Copyrights of this document are owned by Göktekin Enerji A.Ş. All rights reserved. No part of this document or the information it contains cannot be copied, sent, processed, or recorded in any form, or disclosed to third parties by electronic, mechanical, photographic or other means without prior written consent of Göktekin Enerji A.Ş.

# SAMSUN

## YEŞİL KÜRE SPP

### 5.183,20 kWp



#### ELECTRICITY OUTPUT

AC: 3.996,00 kWe DC: 5.183,20 kWp



#### ANNUAL POWER GENERATION

6.306.000 kWh



#### CAPACITY (NUMBER OF HOUSEHOLDS POWERED)

2.077 Households



#### NUMBER OF SOLAR PANELS USED

16.720 Panels



#### GREENHOUSE GAS EMISSIONS AVOIDED EACH YEAR

3.153.000 kg.



#### DATE OF COMMISSIONING

16.11.2019



# ADANA

## ABDİOĞULLARI PLASTİK-8.1 SPP

### 2.910,60 kWp



#### ELECTRICITY OUTPUT

AC: 2.484,00 kWe DC: 2.910,60 kWp



#### ANNUAL POWER GENERATION

3.488.776 kWh



#### CAPACITY (NUMBER OF HOUSEHOLDS POWERED)

1.149 Households



#### NUMBER OF SOLAR PANELS USED

7.560 Panels



#### GREENHOUSE GAS EMISSIONS AVOIDED EACH YEAR

2.093.266 kg.



#### DATE OF COMMISSIONING

29.07.2020



\* Copyright 2015 Göktekin Enerji A.Ş. Copyrights of this document are owned by Göktekin Enerji A.Ş. All rights reserved. No part of this document or the information it contains cannot be copied, sent, processed, or recorded in any form, or disclosed to third parties by electronic, mechanical, photographic or other means without prior written consent of Göktekin Enerji A.Ş.



# ADANA

## PALMIYE TEKSTİL SPP

2.400,00 kWp



### ELECTRICITY OUTPUT

AC: 2.000,00 kWe DC: 2.400,00 kWp



### ANNUAL POWER GENERATION

2.990.496 kWh



### CAPACITY (NUMBER OF HOUSEHOLDS POWERED)

985 Households



### NUMBER OF SOLAR PANELS USED

7.500 Panels



### GREENHOUSE GAS EMISSIONS AVOIDED EACH YEAR

1.794.298 kg.



### DATE OF COMMISSIONING

22.06.2020



# ADANA

## ABDİOĞULLARI PLASTİK-2 SPP

1.746,36 kWp



### ELECTRICITY OUTPUT

AC: 1.490,40 kWe DC: 1.746,36 kWp



### ANNUAL POWER GENERATION

2.060.353 kWh



### CAPACITY (NUMBER OF HOUSEHOLDS POWERED)

679 Households



### NUMBER OF SOLAR PANELS USED

4.536 Panels



### GREENHOUSE GAS EMISSIONS AVOIDED EACH YEAR

1.236.212 kg.



### DATE OF COMMISSIONING

22.07.2020



\* Copyright 2015 Göktekin Enerji A.Ş. Copyrights of this document are owned by Göktekin Enerji A.Ş. All rights reserved. No part of this document or the information it contains cannot be copied, sent, processed, or recorded in any form, or disclosed to third parties by electronic, mechanical, photographic or other means without prior written consent of Göktekin Enerji A.Ş.

# ADANA

## ABDİOĞULLARI PLASTİK-7 SPP

1.261,26 kWp



### ELECTRICITY OUTPUT

AC: 1.076,40 kWe DC: 1.261,26 kWp



### ANNUAL POWER GENERATION

1.483.116 kWh



### CAPACITY (NUMBER OF HOUSEHOLDS POWERED)

489 Households



### NUMBER OF SOLAR PANELS USED

3.276 Panels



### GREENHOUSE GAS EMISSIONS AVOIDED EACH YEAR

889.870 kg.



### DATE OF COMMISSIONING

29.07.2020



# KAHRAMANMARAŞ

## RİMSA TEKSTİL SPP

1.250,48 kWp



### ELECTRICITY OUTPUT

AC: 1.104,00 kWe DC: 1.250,48 kWp



### ANNUAL POWER GENERATION

1.728.594 kWh



### CAPACITY (NUMBER OF HOUSEHOLDS POWERED)

569 Households



### NUMBER OF SOLAR PANELS USED

3.248 Panels



### GREENHOUSE GAS EMISSIONS AVOIDED EACH YEAR

1.037.156 kg.



### DATE OF COMMISSIONING

11.08.2020



\* Copyright 2015 Göktekin Enerji A.Ş. Copyrights of this document are owned by Göktekin Enerji A.Ş. All rights reserved. No part of this document or the information it contains cannot be copied, sent, processed, or recorded in any form, or disclosed to third parties by electronic, mechanical, photographic or other means without prior written consent of Göktekin Enerji A.Ş.



# ADANA

## ABDİOĞULLARI PLASTİK-1 SPP

1.164,24 kWp



### ELECTRICITY OUTPUT

AC: 993,60 kWe DC: 1.164,24 kWp



### ANNUAL POWER GENERATION

1.384.644 kWh



### CAPACITY (NUMBER OF HOUSEHOLDS POWERED)

456 Households



### NUMBER OF SOLAR PANELS USED

3.024 Panels



### GREENHOUSE GAS EMISSIONS AVOIDED EACH YEAR

830.787 kg.



### DATE OF COMMISSIONING

29.07.2020



# ADANA

## ATLAS DENİM TEKSTİL SPP

6.225,28 kWp



### ELECTRICITY OUTPUT

AC: 4.995,60 kWe DC: 6.225,28 kWp



### ANNUAL POWER GENERATION

7.621.013 kWh



### CAPACITY (NUMBER OF HOUSEHOLDS POWERED)

2.510 Households



### NUMBER OF SOLAR PANELS USED

19.454 Panels



### GREENHOUSE GAS EMISSIONS AVOIDED EACH YEAR

736.987.459 kg.



### DATE OF COMMISSIONING

28.01.2020



\* Copyright 2015 Göktekin Enerji A.Ş. Copyrights of this document are owned by Göktekin Enerji A.Ş. All rights reserved. No part of this document or the information it contains cannot be copied, sent, processed, or recorded in any form, or disclosed to third parties by electronic, mechanical, photographic or other means without prior written consent of Göktekin Enerji A.Ş.



# ADANA

VERİ MERKEZİ SPP

**249,60 kWp**



#### ELECTRICITY OUTPUT

AC: 220,80 kWe DC: 249,60 kWp



#### ANNUAL POWER GENERATION

333.600 kWh



#### CAPACITY (NUMBER OF HOUSEHOLDS POWERED)

110 Households



#### NUMBER OF SOLAR PANELS USED

780 Panels



#### GREENHOUSE GAS EMISSIONS AVOIDED EACH YEAR

166.800 kg.



#### DATE OF COMMISSIONING

23.08.2019



# ANKARA

OLİMPİYAT ISI SPP

**404,25 kWp**



#### ELECTRICITY OUTPUT

AC: 350,00 kWe DC: 404,25 kWp



#### ANNUAL POWER GENERATION

472.871 kWh



#### CAPACITY (NUMBER OF HOUSEHOLDS POWERED)

156 Hane



#### NUMBER OF SOLAR PANELS USED

1.050 Panels



#### GREENHOUSE GAS EMISSIONS AVOIDED EACH YEAR

222.250 kg.



#### DATE OF COMMISSIONING

24.07.2020



\* Copyright 2015 Göktekin Enerji A.Ş. Copyrights of this document are owned by Göktekin Enerji A.Ş. All rights reserved. No part of this document or the information it contains cannot be copied, sent, processed, or recorded in any form, or disclosed to third parties by electronic, mechanical, photographic or other means without prior written consent of Göktekin Enerji A.Ş.

# ADANA

## ŞAHİNAĞA BERKMEN ÇATI SPP

**181,98 kWp**



### ELECTRICITY OUTPUT

AC: 165,60 kWe DC: 181,98 kWp



### ANNUAL POWER GENERATION

233.000 kWh



### CAPACITY (NUMBER OF HOUSEHOLDS POWERED)

77 Households



### NUMBER OF SOLAR PANELS USED

674 Panels



### GREENHOUSE GAS EMISSIONS AVOIDED EACH YEAR

116.500 kg.



### DATE OF COMMISSIONING

16.01.2019



# ADANA

## TEKFEN SPP

**47,04 kWp**



### ELECTRICITY OUTPUT

AC: 42,60 kWe DC: 47,04 kWp



### ANNUAL POWER GENERATION

75.941 kWh



### CAPACITY (NUMBER OF HOUSEHOLDS POWERED)

25 Households



### NUMBER OF SOLAR PANELS USED

147 Panels



### GREENHOUSE GAS EMISSIONS AVOIDED EACH YEAR

45.565 kg.



### DATE OF COMMISSIONING

03.07.2020



\* Copyright 2015 Göktekin Enerji A.Ş. Copyrights of this document are owned by Göktekin Enerji A.Ş. All rights reserved. No part of this document or the information it contains cannot be copied, sent, processed, or recorded in any form, or disclosed to third parties by electronic, mechanical, photographic or other means without prior written consent of Göktekin Enerji A.Ş.



# VAN

## BAŞKALE SPP

13.700,70 kWp



### ELECTRICITY OUTPUT

AC: 11.682,00 kWe DC: 13.700,70 kWp



### ANNUAL POWER GENERATION

22.599.000 kWh



### CAPACITY (NUMBER OF HOUSEHOLDS POWERED)

7.444 Households



### NUMBER OF SOLAR PANELS USED

42.156 Panels



### GREENHOUSE GAS EMISSIONS AVOIDED EACH YEAR

11.299.500 kg.



### DATE OF COMMISSIONING

10.12.2019



# DİYARBAKIR

## KESENTAŞ SPP

12.414,60 kWp



### ELECTRICITY OUTPUT

AC: 10.690,00 kWe DC: 12.414,60 kWp



### ANNUAL POWER GENERATION

17.713.000 kWh



### CAPACITY (NUMBER OF HOUSEHOLDS POWERED)

5.834 Households



### NUMBER OF SOLAR PANELS USED

43.560 Panels



### GREENHOUSE GAS EMISSIONS AVOIDED EACH YEAR

8.856.500 kg.



### DATE OF COMMISSIONING

29.03.2019



\* Copyright 2015 Göktekin Enerji A.Ş. Copyrights of this document are owned by Göktekin Enerji A.Ş. All rights reserved. No part of this document or the information it contains cannot be copied, sent, processed, or recorded in any form, or disclosed to third parties by electronic, mechanical, photographic or other means without prior written consent of Göktekin Enerji A.Ş.



# AĞRI

## SUÇATAĞI SPP

**7.020,00 kWp**



### ELECTRICITY OUTPUT

AC: 5.940,00 kWe DC: 7.020,00 kWp



### ANNUAL POWER GENERATION

10.728.000 kWh



### CAPACITY (NUMBER OF HOUSEHOLDS POWERED)

3.534 Households



### NUMBER OF SOLAR PANELS USED

21.600 Panels



### GREENHOUSE GAS EMISSIONS AVOIDED EACH YEAR

5.364.000 kg.



### DATE OF COMMISSIONING

17.02.2020



# YOZGAT

## SARAYKÖY SPP

**6.415,20 kWp**



### ELECTRICITY OUTPUT

AC: 5.760,00 kWe DC: 6.415,20 kWp



### ANNUAL POWER GENERATION

10.395.000 kWh



### CAPACITY (NUMBER OF HOUSEHOLDS POWERED)

3.424 Households



### NUMBER OF SOLAR PANELS USED

23.760 Panels



### GREENHOUSE GAS EMISSIONS AVOIDED EACH YEAR

5.197.500 kg.



### DATE OF COMMISSIONING

30.03.2018



\* Copyright 2015 Göktekin Enerji A.Ş. Copyrights of this document are owned by Göktekin Enerji A.Ş. All rights reserved. No part of this document or the information it contains cannot be copied, sent, processed, or recorded in any form, or disclosed to third parties by electronic, mechanical, photographic or other means without prior written consent of Göktekin Enerji A.Ş.

# OSMANİYE

## DÜZİÇİ SPP

### 5.799,38 kWp



#### ELECTRICITY OUTPUT

AC: 4.938,00 kWe DC: 5.799,38 kWp



#### ANNUAL POWER GENERATION

9.219.000 kWh



#### CAPACITY (NUMBER OF HOUSEHOLDS POWERED)

3.037 Households



#### NUMBER OF SOLAR PANELS USED

15.465 Panels



#### GREENHOUSE GAS EMISSIONS AVOIDED EACH YEAR

4.609.500 kg.



#### DATE OF COMMISSIONING

18.11.2019



# OSMANİYE

## YAVERİYE SPP

### 5.788,65 kWp



#### ELECTRICITY OUTPUT

AC: 4.845,00 kWe DC: 5.788,65 kWp



#### ANNUAL POWER GENERATION

8.533.000 kWh



#### CAPACITY (NUMBER OF HOUSEHOLDS POWERED)

2.811 Households



#### NUMBER OF SOLAR PANELS USED

15.645 Panels



#### GREENHOUSE GAS EMISSIONS AVOIDED EACH YEAR

4.266.500 kg.



#### DATE OF COMMISSIONING

18.11.2019



\* Copyright 2015 Göktekin Enerji A.Ş. Copyrights of this document are owned by Göktekin Enerji A.Ş. All rights reserved. No part of this document or the information it contains cannot be copied, sent, processed, or recorded in any form, or disclosed to third parties by electronic, mechanical, photographic or other means without prior written consent of Göktekin Enerji A.Ş.



# KONYA

## KULU DOĞUTEPE SPP

**4.722,30 kWp**



### ELECTRICITY OUTPUT

AC: 4.450,00 kWe DC: 4.722,30 kWp



### ANNUAL POWER GENERATION

7.215.900 kWh



### CAPACITY (NUMBER OF HOUSEHOLDS POWERED)

2.377 Households



### NUMBER OF SOLAR PANELS USED

17.820 Panels



### GREENHOUSE GAS EMISSIONS AVOIDED EACH YEAR

3.607.950 kg.



### DATE OF COMMISSIONING

25.08.2017



# ADANA

## BURUK SPP

**3.984,00 kWp**



### ELECTRICITY OUTPUT

AC: 3.400,00 kWe DC: 3.984,00 kWp



### ANNUAL POWER GENERATION

5.732.000 kWh



### CAPACITY (NUMBER OF HOUSEHOLDS POWERED)

1.888 Hane



### NUMBER OF SOLAR PANELS USED

10.624 Panels



### GREENHOUSE GAS EMISSIONS AVOIDED EACH YEAR

2.866.000 kg.



### DATE OF COMMISSIONING

18.11.2019



\* Copyright 2015 Göktekin Enerji A.Ş. Copyrights of this document are owned by Göktekin Enerji A.Ş. All rights reserved. No part of this document or the information it contains cannot be copied, sent, processed, or recorded in any form, or disclosed to third parties by electronic, mechanical, photographic or other means without prior written consent of Göktekin Enerji A.Ş.

# İZMİR

## KİRAZ SPP

2.217,60 kWp



### ELECTRICITY OUTPUT

AC: 1.980,00 kWe DC: 2.217,60 kWp



### ANNUAL POWER GENERATION

3.780.000 kWh



### CAPACITY (NUMBER OF HOUSEHOLDS POWERED)

1.245 Households



### NUMBER OF SOLAR PANELS USED

7.920 Panels



### GREENHOUSE GAS EMISSIONS AVOIDED EACH YEAR

1.890.000 kg.



### DATE OF COMMISSIONING

20.12.2018



# NEVŞEHİR

## KARAPINAR SPP

2.138,40 kWp



### ELECTRICITY OUTPUT

AC: 1.920,00 kWe DC: 2.138,40 kWp



### ANNUAL POWER GENERATION

3.609.500 kWh



### CAPACITY (NUMBER OF HOUSEHOLDS POWERED)

1.189 Households



### NUMBER OF SOLAR PANELS USED

7.920 Panels



### GREENHOUSE GAS EMISSIONS AVOIDED EACH YEAR

1.804.750 kg.



### DATE OF COMMISSIONING

30.03.2018



\* Copyright 2015 Göktekin Enerji A.Ş. Copyrights of this document are owned by Göktekin Enerji A.Ş. All rights reserved. No part of this document or the information it contains cannot be copied, sent, processed, or recorded in any form, or disclosed to third parties by electronic, mechanical, photographic or other means without prior written consent of Göktekin Enerji A.Ş.



# İZMİR

## BAĞARASI SPP

**2.138,40 kWp**



### ELECTRICITY OUTPUT

AC: 1.998,00 kWe DC: 2.138,40 kWp



### ANNUAL POWER GENERATION

3.443.900 kWh



### CAPACITY (NUMBER OF HOUSEHOLDS POWERED)

1.134 Households



### NUMBER OF SOLAR PANELS USED

7.920 Panels



### GREENHOUSE GAS EMISSIONS AVOIDED EACH YEAR

1.721.950 kg.



### DATE OF COMMISSIONING

12.03.2018



# AFYONKARAHİSAR

## GAZLIGÖL SPP

**1.069,20 kWp**



### ELECTRICITY OUTPUT

AC: 986,00 kWe DC: 1.069,20 kWp



### ANNUAL POWER GENERATION

1.442.700 kWh



### CAPACITY (NUMBER OF HOUSEHOLDS POWERED)

475 Households



### NUMBER OF SOLAR PANELS USED

3.960 Panels



### GREENHOUSE GAS EMISSIONS AVOIDED EACH YEAR

721.350 kg.



### DATE OF COMMISSIONING

18.01.2018



\* Copyright 2015 Göktekin Enerji A.Ş. Copyrights of this document are owned by Göktekin Enerji A.Ş. All rights reserved. No part of this document or the information it contains cannot be copied, sent, processed, or recorded in any form, or disclosed to third parties by electronic, mechanical, photographic or other means without prior written consent of Göktekin Enerji A.Ş.

# ADANA

ÖZBALTU SPP

249,48 kWp



## ELECTRICITY OUTPUT

AC: 240,00 kWe DC: 249,48 kWp



## ANNUAL POWER GENERATION

339.900kWh



## CAPACITY (NUMBER OF HOUSEHOLDS POWERED)

112 Households



## NUMBER OF SOLAR PANELS USED

924 Panels



## GREENHOUSE GAS EMISSIONS AVOIDED EACH YEAR

169.950 kg.



## DATE OF COMMISSIONING

03.09.2018



# MUĞLA

ÇAVUŞ ADASI RADAR VE GÖZLEM İSTASYONU

116,64 kWp



## ELECTRICITY OUTPUT

AC: 60 kWe DC: 116,64 kWp



## ANNUAL POWER GENERATION

126.144 kWh



## CAPACITY (NUMBER OF HOUSEHOLDS POWERED)

44 Households



## NUMBER OF SOLAR PANELS USED

432 Panels



## GREENHOUSE GAS EMISSIONS AVOIDED EACH YEAR

63.072 kg.



## DATE OF COMMISSIONING

02.09.2018



\* Copyright 2015 Göktekin Enerji A.Ş. Copyrights of this document are owned by Göktekin Enerji A.Ş. All rights reserved. No part of this document or the information it contains cannot be copied, sent, processed, or recorded in any form, or disclosed to third parties by electronic, mechanical, photographic or other means without prior written consent of Göktekin Enerji A.Ş.



# ADANA

## TÜMEN TARIM SPP

**60,48 kWp**



### ELECTRICITY OUTPUT

AC: 60,00 kWe DC: 60,48 kWp



### ANNUAL POWER GENERATION

81.443 kWh



### CAPACITY (NUMBER OF HOUSEHOLDS POWERED)

27 Households



### NUMBER OF SOLAR PANELS USED

224 Panels



### GREENHOUSE GAS EMISSIONS AVOIDED EACH YEAR

40.722 kg.



### DATE OF COMMISSIONING

04.09.2018



\* Copyright 2015 Göktekin Enerji A.Ş. Copyrights of this document are owned by Göktekin Enerji A.Ş. All rights reserved. No part of this document or the information it contains cannot be copied, sent, processed, or recorded in any form, or disclosed to third parties by electronic, mechanical, photographic or other means without prior written consent of Göktekin Enerji A.Ş.

# ONGOING PROJECTS



\*  
© Copyright 2015 Goktekin Enerji A.Ş. Copyrights of this document are owned by Goktekin Enerji A.Ş. All rights reserved. No part of this document or the information it contains cannot be copied, sent, processed, or recorded in any form, or disclosed to third parties by electronic, mechanical, photographic or other means without prior written consent of Goktekin Enerji A.Ş.



### BOSSA SPP / ADANA

ELECTRICITY OUTPUT: 5.600,00 kWe / 7.033,95 kWp  
NUMBER OF SOLAR PANELS USED: 18.270 Panels



### ABDİOĞULLARI PLASTİK-8.2 SPP / ADANA

ELECTRICITY OUTPUT: 3.726,00 kWe / 4.480,00 kWp  
NUMBER OF SOLAR PANELS USED: 7.560 Panels



### BÜROTİME / KONYA

ELECTRICITY OUTPUT: 2.050,00 kWe / 3.107,16 kWp  
NUMBER OF SOLAR PANELS USED: 7.398 Panels



### AKYILDIZ MUTFAK / KAHRAMANMARAŞ

ELECTRICITY OUTPUT: 1.987,20 kWe / 2.318,40 kWp  
NUMBER OF SOLAR PANELS USED: 5.796 Panels



\* Copyright 2015 Göktekin Enerji A.Ş. Copyrights of this document are owned by Göktekin Enerji A.Ş. All rights reserved. No part of this document or the information it contains cannot be copied, sent, processed, or recorded in any form, or disclosed to third parties by electronic, mechanical, photographic or other means without prior written consent of Göktekin Enerji A.Ş.

### KEVSER HALI-1 / GAZİANTEP

ELECTRICITY OUTPUT: 1.821,60 kWe / 2.217,60 kWp  
NUMBER OF SOLAR PANELS USED: 5.544 Panels



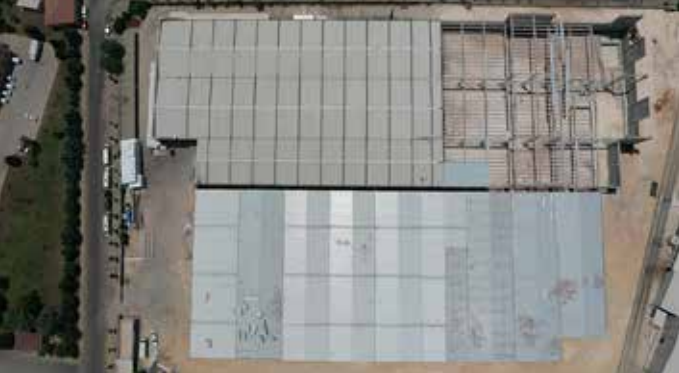
### GÜLBAHAR ENERJİ ÜRETİM A.Ş ALA SPP / BİTLİS (LİSANSLI)

ELECTRICITY OUTPUT: 16.000,00 kWe / 24.192,00 kWp  
NUMBER OF SOLAR PANELS USED: 56.576 Panels  
ANNUAL POWER GENERATION: 33.465.000 kWh



### KEVSER HALI-2 / GAZİANTEP

ELECTRICITY OUTPUT: 1.821,60 kWe / 2.217,60 kWp  
NUMBER OF SOLAR PANELS USED: 5.544 Panels



\* Copyright 2015 Goktekin Enerji A.Ş. Copyrights of this document are owned by Goktekin Enerji A.Ş. All rights reserved. No part of this document or the information it contains cannot be copied, sent, processed, or recorded in any form, or disclosed to third parties by electronic, mechanical, photographic or other means without prior written consent of Goktekin Enerji A.Ş.

### ERBEY DOKUMA / ADANA

ELECTRICITY OUTPUT: 1.656,00 kWe / 2.078,40 kWp  
NUMBER OF SOLAR PANELS USED: 5.196 Panels



### KAVACIK SPP / ESKİŞEHİR

ELECTRICITY OUTPUT: 1.400,00 kWe / 1.600,00 kWp  
NUMBER OF SOLAR PANELS USED: 5.040 Panels  
ANNUAL POWER GENERATION: 2.719.316 kWh  
GREENHOUSE GAS EMISSIONS AVOIDED EACH YEAR: 1.359.658 kg.



### AŞKALE SPP / ERZURUM

ELECTRICITY OUTPUT: 5.940,00 kWe / 7.020,00 kWp  
ANNUAL POWER GENERATION: 9.987.000 kWh  
CAPACITY (NUMBER OF HOUSEHOLDS POWERED): 3.290 Households  
NUMBER OF SOLAR PANELS USED: 21.600 Panels  
GREENHOUSE GAS EMISSIONS AVOIDED EACH YEAR: 4.993.500 kg.



\* Copyright 2015 Göktekin Enerji A.Ş. Copyrights of this document are owned by Göktekin Enerji A.Ş. All rights reserved. No part of this document or the information it contains cannot be copied, sent, processed, or recorded in any form, or disclosed to third parties by electronic, mechanical, photographic or other means without prior written consent of Göktekin Enerji A.Ş.



## MİLKAY TEKNİK TEKSTİL (AKELYAF) / KAYSERİ

ELECTRICITY OUTPUT: 1.048,80 kWe / 1.332,80 kWp  
NUMBER OF SOLAR PANELS USED: 3.276 Panels



## AKMİNA MAKİNE TEKSTİL / NIĞDE

ELECTRICITY OUTPUT: 1.076,40 kWe / 1.265,60 kWp  
NUMBER OF SOLAR PANELS USED: 3.322 Panels



## TÜMEN TARIM / ADANA

ELECTRICITY OUTPUT: 800,40 kWe / 971,20 kWp  
NUMBER OF SOLAR PANELS USED: 2.428 Panels



\* Copyright 2015 Goktekin Enerji A.Ş. Copyrights of this document are owned by Goktekin Enerji A.Ş. All rights reserved. No part of this document or the information it contains cannot be copied, sent, processed, or recorded in any form, or disclosed to third parties by electronic, mechanical, photographic or other means without prior written consent of Goktekin Enerji A.Ş.

### ESENYURT SPP / İSTANBUL

ELECTRICITY OUTPUT: 386,40 kWe / 447,48 kWp  
NUMBER OF SOLAR PANELS USED: 1.356 Panels



### KÖSEOĞLU AGRO TARIM / ADANA

ELECTRICITY OUTPUT: 350,00 kWe / 436,80 kWp  
NUMBER OF SOLAR PANELS USED: 1.092 Panels



### ATLAS FİDE SPP / ADANA

ELECTRICITY OUTPUT: 165,60 kWe / 204,80 kWp  
NUMBER OF SOLAR PANELS USED: 640 Panels



\* Copyright 2015 Göktekin Enerji A.Ş. Copyrights of this document are owned by Göktekin Enerji A.Ş. All rights reserved. No part of this document or the information it contains cannot be copied, sent, processed, or recorded in any form, or disclosed to third parties by electronic, mechanical, photographic or other means without prior written consent of Göktekin Enerji A.Ş.

## DEREKÖY SPP / İZMİR

**ELECTRICITY OUTPUT:** 3.000,00 kWe / 3.532,80 kWp  
**NUMBER OF SOLAR PANELS USED:** 12.672 Panels  
**ANNUAL POWER GENERATION:** 5.673.157 kWh  
**CAPACITY (NUMBER OF HOUSEHOLDS POWERED):** 1869 Households  
**GREENHOUSE GAS EMISSIONS AVOIDED EACH YEAR:** 2.836.578 kg.



## FLAMENT / GAZİANTEP

**ELECTRICITY OUTPUT:** 1.821,6 kWe / 2.140,32 kWp  
**NUMBER OF SOLAR PANELS USED:** 5096 Panels



## COLGATE-PALMOLİVE SPP / KOCAELİ

**ELECTRICITY OUTPUT:** 82,80 kWe / 98,80 kWp  
**NUMBER OF SOLAR PANELS USED:** 312 Panels



\* Copyright 2015 Goktekin Enerji A.Ş. Copyrights of this document are owned by Goktekin Enerji A.Ş. All rights reserved. No part of this document or the information it contains cannot be copied, sent, processed, or recorded in any form, or disclosed to third parties by electronic, mechanical, photographic or other means without prior written consent of Goktekin Enerji A.Ş.





# Yetki Belgesi

GÖKTEKİN ENERJİ A.Ş.

18 Nisan 2007 tarihli ve 5627 sayılı 'Enerji Verimliliği Kanunu ve 27 Ekim 2011 tarihli ve 28097 sayılı Resmî Gazete'de yayımlanan 'Enerji Kaynaklarının ve Enerjinin Kullanımında Verimliliğin Artırılmasına Dair Yönetmelik kapsamında; enerji verimliliği alanında **Etüt, Proje ve Danışmanlık Hizmetleri** vermek üzere 29/12/2021 tarihine kadar yetkilendirilmiştir.

**BELGE NO : OKÜ-EVD-002**



**SINIFI** **UZMANLIK**  
**B Sınıfı Ticari ve Hizmet Binaları**

*M. Türk*  
Prof. Dr. Murat TÜRK  
Rektör

*Oğuz ÇAN*  
Dr. Oğuz ÇAN  
Bakan a.  
EVÇED Başkanı



©Copyright 2015 Göktekin Enerji A.Ş. Copyrights of this document are owned by Göktekin Enerji A.Ş. All rights reserved. No part of this document or the information it contains cannot be copied, sent, processed, or recorded in any form, or disclosed to third parties by electronic, mechanical, photographic or other means without prior written consent of Göktekin Enerji A.Ş.





#### HEAD OFFICE

📍 Belediye Evleri Mh. 84249 Sk. 2-E Çukurova/ADANA  
☎ +90 322 248 47 00

#### İSTANBUL OFFICE

📍 Zorlu Center, Levazım Mh. Kuru Sk. Teras Evleri Daire: 24 Beşiktaş/İSTANBUL  
☎ +90 212 823 37 00  
✉ info@goktekinenerji.com 🌐 www.goktekinenerji.com



www.goktekinenerji.com

