



Q2

2024

INTRODUCTION FILE



444 3 GES



goktekinenerji.com



**Göktekin
Enerji**

Infinite energy of Turkey



GÖKTEKİN GROUP BACKGROUND

While there is no capital or commercial affiliation with Göktekin Enerji, the first flagship company of the family, Göktekin Dış Ticaret, started its operations back in 1979, for the purpose of selling white goods and small home appliances manufactured under the brand name Gosonic. Starting its export operations in 1988, the company abandoned its domestic operations from 2001 onwards and focused exclusively on export operations, becoming one of the most reliable home appliance brands in the Middle East. Reaching an annual mean export value of USD 100 Million, the company became a leader in these markets, owing to its product diversity and a wide dealership and service network.

Our founder Abdullah Göktekin grew his own business in the USA after graduating from two US-universities, majoring in International Trade Management and Administration. In 2014, he went to Erbil as the Iraq Country Manager of Gosonic. Serving in this position for 18 months, Abdullah Göktekin left his position in Göktekin Dış Ticaret with the founding of Göktekin Enerji in 2015.



GOSONIC®

gosonic.com.tr

Göktekin
iz bırakın dokunuşlar

goktekin.com.tr

 **Göktekin
Enerji**
Türkiye'nin sonsuz enerjisi

goktekinenerji.com

GÖKTEKİN ENERJİ

THROUGH THE YEARS

Our company is an engineering firm founded in 2015 for the purpose of providing EPC (Engineering, Procurement & Construction) services. Spending the year 2016 as a preparatory period working on organizational structuring and strategic planning, we obtained all the relevant technical qualification certificates and quality certificates within the same year. On top of all of that, our company is the first EPC company who earned the right to operate as a consultant by obtaining the "Energy Efficiency Consultant" (EEC) certificate as a result of the training provided by the Ministry of Energy and Natural Resources. Beginning its project operations in 2017 and focusing on the construction of land-based solar power plants, our company first completed the Konya Kulu SPP with an installed capacity of 4.725 kWp and then installed two SPP in Afyon with an installed capacity of 1,069 kWp and started its EPC operations.

In 2018, we completed a 2 MW SPP in Nevşehir and a 6,5 MW SPP in Yozgat with our own resources and became an investor in the sector. Within the same year, we completed different projects for public and private sector investors and reached a total installed capacity of 13 MW. We also became the Turkey distributor of SolarEdge, a leading inverter brand in the Europe and US rooftop SPP markets, and began our commercial product sales operations.

In 2019, in line with our objective to further expand our investments, we installed land-based SPPs with a capacity of 13.700 kWp in Van, 12.414 kWp in Diyarbakır, 11.600 kWp in Osmaniye and 4.000 kWp in Adana, and our SPP investment portfolio reached a total installed capacity of over 50 MW. Within the same year, in Samsun, we installed the 5.2 MW Yeşil Küre Solar Power Plant, which was the third biggest rooftop SPP in Turkey at the time of commissioning, including roof and building reinforcement works. Continuing these achievements, we completed 13 new projects over a total capacity of 50 MW and we had a strong start in the rooftop SPP segment.

In light of the Self Consumption Regulations entering into force in May, we predicted the rapid growth potential of the rooftop SPP market and shaped our organizational structure according to the new market dynamics. In 2020, we set out to establish regional offices throughout Turkey and opened our first office in May in

Istanbul. With the establishment of our Ankara and İzmir offices shortly after, we created a wide service network that covers the Mediterranean, Southeastern Anatolia, Marmara, Central Anatolia and Aegean regions. Thanks to this, we increased our focus on rooftop SPP projects significantly. Although we spent the better part of 2020 under Covid-19 restrictions, we managed to complete 35 projects by the end of the year, most of them being rooftop SPPs, with a total installed capacity approaching 100 MW. 29 of these projects were managed and completed simultaneously. In addition to these efforts, we became the distributor of important panel manufacturers such as Hanwha and HT-SAAE. We completed and commissioned the 24 MW Adilcevaz-Alages, which is our licensed SPP investment, in Bitlis.

Increasing our rate of growth in the sustainable energy sector, we also started developing projects on wind power on top of solar power. By the end of 2020, we commissioned the first turbine for the 49.7 MW Metafor in Bingöl, which was our first wind power plant (WPP) project.

In the early months of 2021, while continuing to focus on rooftop solar (GES) projects, we increased our total wind energy capacity to 83.3 MW with the 33.6 MWm Yakağzı Wind Power Plant (RES) in Ağrı. During the same period, we simultaneously managed several other projects, including the 50.4 MWm Çerkeş project in Çankırı, the 33.6 MWm Karamürsel project in Kocaeli, and the 37.8 MWm Hamsi and 4.2 MWm Fener projects in Sinop. These efforts increased our wind energy EPC expertise to a total capacity of 209 MWm by the end of 2022.

By 2023, in line with our medium-term strategies, we expanded our focus to include biomass energy alongside solar and wind energy. As part of this strategy, we initiated two biomass power plant investments, each with a capacity of 16 MW, in Aksaray and Edirne, totalling 32 MW.

On top of all this, we will also build on our experiences on sustainable energy in Turkey, carrying out foreign renewable energy projects with a total capacity of 1.000 MW, which have already been signed in three different countries as of today. Our long-term goal is to become a global player in the renewable energy sector. In line with this goal, over the course of 5 years, we are planning to generate at least 80% of our revenue from our operations in foreign countries, while also maintaining our position as the leading EPC company in Turkey.

Our company took the number 10 spot in the list for The Fastest Growing Companies in Turkey, which was published in 2022 by the Turkish Union of Chambers and Commodity Exchanges, and also came 444th nationwide and 30th in the energy sector in the list for The 500 Biggest Companies in Turkey, which was published by the Fortune magazine.





Abdullah GÖKTEKİN
Chairman of the Board of Directors

Dear Friends of Renewable Energy,

Climate change has made the transition to renewable energy not just a choice but an urgent global necessity for a sustainable future. Green energy, a key pillar in reducing nations' carbon footprints, supports sustainable economic growth while reshaping the geopolitical landscape of energy policies by reducing reliance on fossil fuels.

Following the oil crisis of the 1970s, countries worldwide sought alternative energy sources to enhance energy security and reduce dependence on external supplies. By the 2000s, renewable energy sources such as solar and wind had gained a prominent position in the energy sector, driven by technological advancements.

As the effects of climate change become increasingly apparent, the importance of renewable energy has emerged as a global priority. Today, renewable energy is widely regarded as a cornerstone of both environmental and economic sustainability, laying the foundation for a cleaner world for future generations.

Solar energy, in addition to its environmental benefits, plays a vital role in fostering industrial growth and driving economic development. Recognising the need for innovative solutions to help industrialists excel in global competition, we established Göktekin Enerji in 2015 to address this challenge. Our mission has always been to lead sustainable projects in the energy sector for the benefit of our country.

In our initial years, we built a solid foundation in the sector by providing EPC (Engineering, Procurement & Construction) services. To date, Göktekin Enerji has successfully completed more than 176 solar power plant projects with a total installed capacity exceeding 449 MW. Additionally, we have made significant contributions to our nation's renewable energy capacity with wind energy projects totalling 209 MWm'e. Guided by the principle of efficiency in energy production, we became the only EPC firm certified by the Ministry of Energy and Natural Resources as an Energy Efficiency Consultant (EVD).

We elevated our expertise in EPC by successfully introducing the EPC-F (Engineering, Procurement, Construction & Financing) model. This approach allows us to manage engineering,

procurement, and construction processes while providing financing support for comprehensive solutions. This not only eases the financial burden on our partners but also enhances our contribution to the nation's energy transition.

By adopting the long-term and cost-effective Build-Operate-Transfer model, we have embraced a distinctive approach in the energy sector. Our services include designing projects, delivering turnkey installations, and managing operational processes to meet companies' electricity consumption needs. Through our innovative solutions, we enhance efficiency in energy production, enabling industrialists to more easily achieve their environmental sustainability goals.

In line with our short- and medium-term strategies, we have also invested in biomass energy alongside solar and wind power to support environmental sustainability. Our two plants in Aksaray and Edirne are projected to meet the annual electricity needs of 90,000 households and prevent 202 million kilograms of greenhouse gas emissions annually. These investments not only support the transition to sustainable energy sources in our country but also promote a circular economy by converting waste into a valuable energy resource.

Strategic partnerships, innovative technologies, and sustainable growth strategies remain our top priorities for achieving long-term success in our industry. In this context, our collaborations with globally renowned companies specialising in energy production and infrastructure solutions have accelerated our projects significantly. These international partnerships not only bolster our financial resources but also provide access to cutting-edge technology and global expertise, allowing us to implement our projects successfully in both local and international markets.

The rapid advancements in renewable energy technology and cost reductions have made projects more profitable in shorter timeframes. At Göktekin Enerji, we help our clients lower their energy costs while achieving their carbon-neutral goals, contributing to a sustainable future.












As we have done so far, we will continue to grow with innovative solutions, working towards a cleaner world and a stronger economy.



OUR AREAS OF ACTIVITY



Turnkey SPP Application (Process Management from A to Z)

-  Investment and Process Consultancy
-  Creating Consumption Analyses
-  Field of Application Survey
-  Production Simulations
-  Investment Feasibility
-  Permits and Bureaucratic Process Management
-  Project Design
-  Optimal Product Supply
-  Implementation and Installation
-  Testing, Commissioning and Acceptance Procedures
-  After Sales Maintenance and Operation
-  Monitoring (Performance Monitoring)

EEC (Energy Efficiency Consultancy)

- Preliminary Survey
- Detailed Survey
- Efficiency-Increasing Project Designs
- Energy Management

Commercial Product Sales

- Turkey Distributor of HT-SAAE Solar Panels
- Turkey Distributor of Solaredge Inverters

Maintenance | Operation Services

WHY GÖKTEKİN ENERJİ?



Successfully completed 178 projects, 449 MW of solar power plants, 209 MW of wind power plants and over 658 MW of EPC experience



2 BES investments with a total capacity of 32 MW



The first and only SPP installer (EPC) that holds the Energy Efficiency Consultancy (EEC) certificate issued by the Ministry of Energy and Natural Resources



Expert and experienced technical and administrative staff, mostly engineers



Product selection and supply from the world's top and leading brands



Production performance guarantee



"Independent Technical Consultant Auditing" throughout the term of application



Process management from A to Z including distinguished roof and building reinforcement services by Göktekin Yapı



All Risk Installation Insurance throughout the term of application



High standards of occupational health and safety



For 2 years after project delivery;

- ✓ Monitoring services (Full-time production and performance monitoring)
- ✓ Periodic maintenance and testing
- ✓ Monthly production and performance reporting



GÖKTEKİN ENERJİ

OPERATION, MAINTENANCE & REPAIR SERVICES



Another one of our service models that will provide added value to your company after the turnkey project design and delivery of your solar power plant, is our operation, maintenance and repair services.

The most important purpose of these services that are provided by a special team consisting of engineers who are experts in

their field, is to ensure that the solar power plants that we install run with maximum efficiency. This allows us to reduce the time required for the return on your SPP investment and prolong its service life.

Our monitoring division within the operation, maintenance and repair team review the critical parameters pertaining to

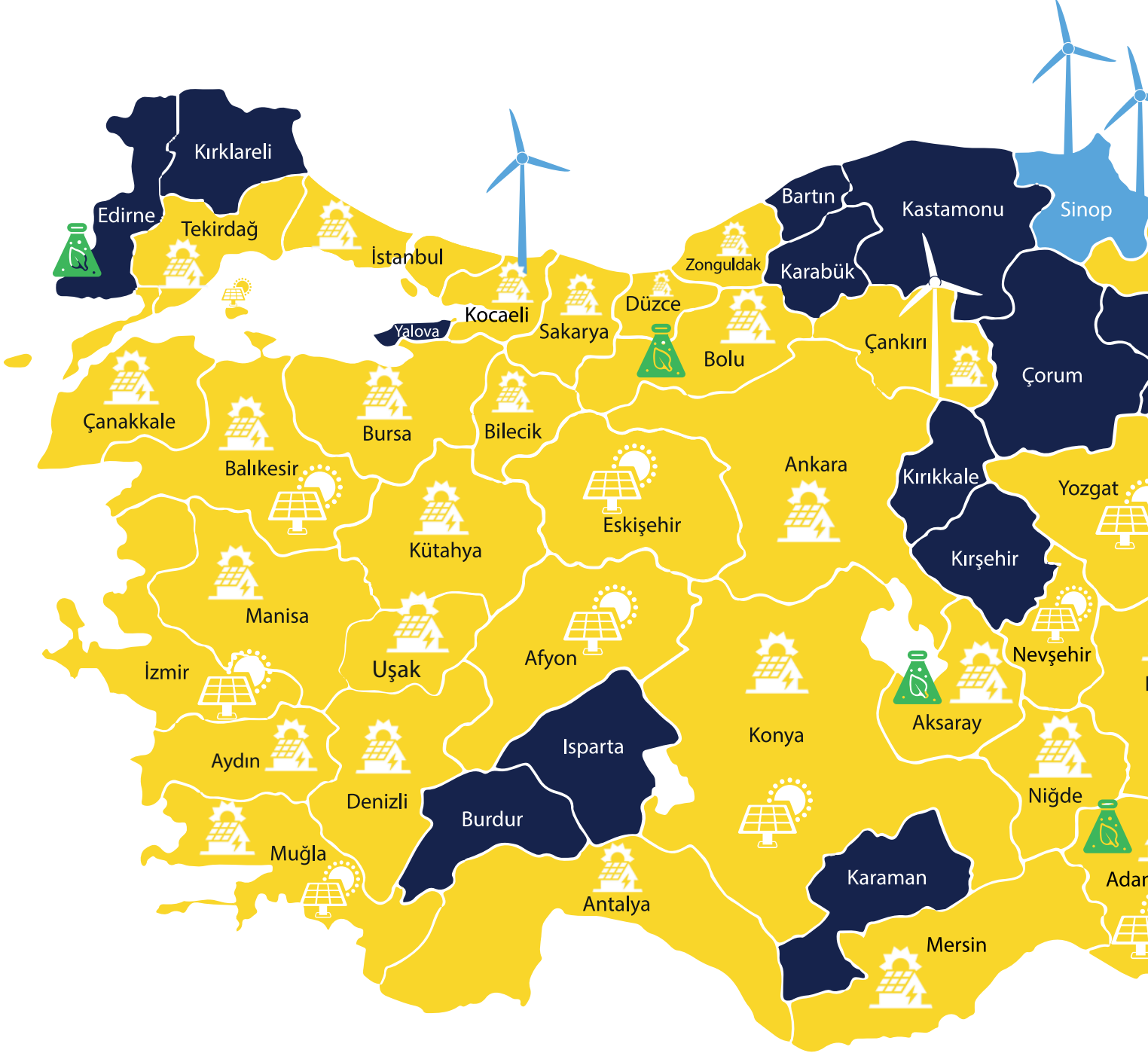


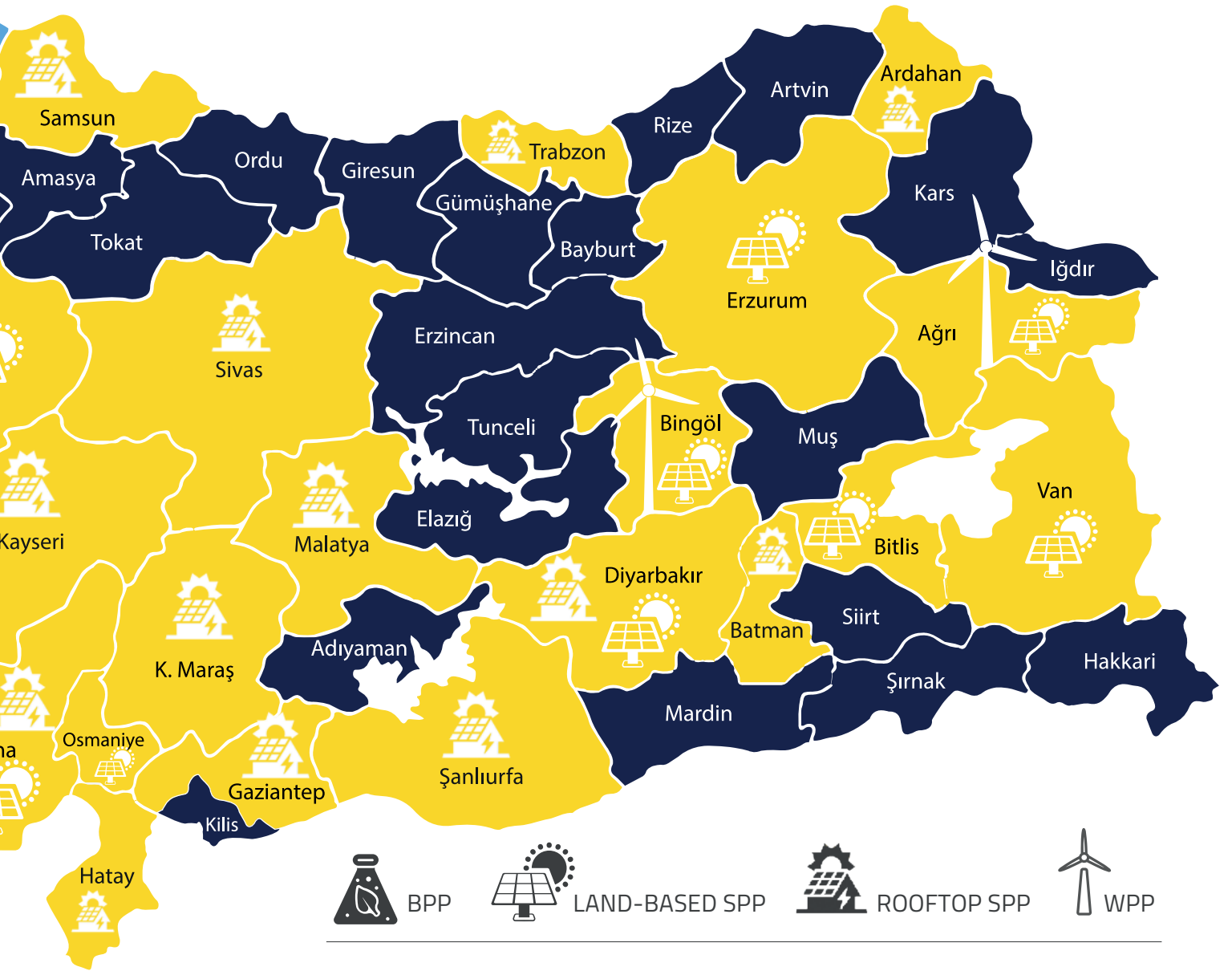
your solar power plant on a continuous basis and ensure that they produce optimal levels of energy. In case of a failure that may affect the efficiency of your plant, the monitoring division identifies the issue instantly.

The necessary response is planned and coordinated from a single central location. With visits from the remote access or

on-site teams, it is ensured that the failure is remedied as soon as possible. All analyses and system data collected with regards to the condition of your SPP investment are shared with you on a regular basis. Your solar power plant is constantly supervised within the framework of this transparent structure and it is ensured that your company has access to clean energy at all times without interruption.

GÖKTEKİN ENERJİ PROJECT SITES

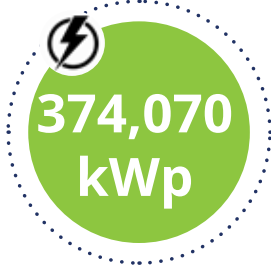




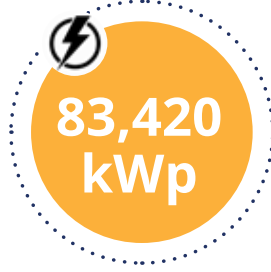
COMPLETED PROJECTS

| | | | | | | | |
|------------|----------------------------|--------|-----|------------|--------------------------------|--------|-----|
| BURSA | TOGG SPP | 14,970 | kWp | MERSİN | TÜMEN TARIM 1 SPP | 1,042 | kWp |
| ADANA | BOSSA SPP | 11,740 | kWp | ANKARA | AKMERMER SPP | 1,005 | kWp |
| K, MARAŞ | ISKUR TEKSTİL SPP | 9,448 | kWp | KÜTAHYA | BOLİŞ PLASTİK SPP | 970 | kWp |
| MUĞLA | YDA HAVALİMANI (ÇATI) SPP | 8,100 | kWp | MERSİN | SEÇİL KAUKÇUK 1 SPP | 969 | kWp |
| ADANA | ABDİÖĞULLARI PLASTİK 8 SPP | 7,391 | kWp | UŞAK | BEPÄ 2 SPP | 925 | kWp |
| KONYA | BÜROTIME SPP | 7,139 | kWp | İSTANBUL | SORA KOZMETİK 1 SPP | 900 | kWp |
| BİLECİK | ECZACIBAŞI VİTRA SPP | 6,402 | kWp | BURSA | ERŞAT TEKSTİL 1 SPP | 878 | kWp |
| ADANA | OĞUZ TEKSTİL 3 SPP | 6,268 | kWp | TEKİRDAĞ | AKSA JENERATÖR SPP | 867 | kWp |
| ADANA | ATLAS DENİM TEKSTİL SPP | 6,225 | kWp | BATMAN | MSA PLASTİK (AVCU BORU) SPP | 860 | kWp |
| AKSARAY | MERCEDES BENZ SPP-1 | 6,195 | kWp | MERSİN | MESKİ KISIM 3-YENİŞEHİR SPP | 838 | kWp |
| ADANA | BOSSA YENİ FABRİKA SPP | 5,317 | kWp | BOLU | ALPPLAS SPP | 816 | kWp |
| SAMSUN | TIRYAKI SPP | 5,183 | kWp | MUĞLA | GÜLPÖRT BODRUM SPP | 797 | kWp |
| K, MARAŞ | MARİTAŞ TEKSTİL SPP | 5,112 | kWp | UŞAK | AĞA PLASTİK SPP | 681 | kWp |
| KAYSERİ | ERCİYES İSTİKBAL SPP | 4,901 | kWp | MERSİN | MESKİ KISIM 1-TARSUS SPP | 680 | kWp |
| GAZİANTEP | EKONET TEKSTİL SPP | 4,550 | kWp | AYDIN | ABALIOĞU BALIK SPP | 671 | kWp |
| KAYSERİ | ERCİYES ELDA HALI SPP | 4,473 | kWp | BURSA | İBRAŞ KAUKÇUK SPP | 625 | kWp |
| YOZGAT | GEDAŞ GENEL GIDA SPP | 4,012 | kWp | UŞAK | PAK PAMUK SPP | 608 | kWp |
| KÜTAHYA | NG KÜTAHYA SERAMİK SPP | 3,987 | kWp | TEKİRDAĞ | RAN TEKSTİL SPP | 589 | kWp |
| MALATYA | İNTEM TRİKO SPP | 3,882 | kWp | MERSİN | BERDAN CİVATA 5 SPP | 571 | kWp |
| KAYSERİ | ERCİYES BELLONA 6 SPP | 3,880 | kWp | BURSA | İŞİKSOY TEKSTİL TEKSTÜRİZE SPP | 558 | kWp |
| GAZİANTEP | KEVSER HALI SPP | 3,824 | kWp | BALIKESİR | SAĞLAM METAL SPP | 557 | kWp |
| KONYA | BÜROTIME 2 SPP | 3,358 | kWp | ADANA | ÇEKMEZ PLASTİK SPP | 551 | kWp |
| ZONGULDAK | ÇANAĞÇILAR SUSTAIN SPP | 3,344 | kWp | KÜTAHYA | BARON ÇORAP SPP | 501 | kWp |
| KAYSERİ | ERCİYES HES KABLO SPP | 3,281 | kWp | KÜTAHYA | DOĞUKAN GİPE İPLİK SPP | 501 | kWp |
| ANKARA | ASSAN GROUP SPP | 3,160 | kWp | İZMİR | SADAL TARIM SPP | 500 | kWp |
| ÇANKIRI | EREN ÇELİK SPP | 2,850 | kWp | HATAY | TARİK AMBALAJ SPP | 497 | kWp |
| İZMİR | VE-GE KAĞIT SPP | 2,547 | kWp | İSTANBUL | SERİN CİVATA SPP | 480 | kWp |
| K, MARAŞ | ISKUR MODENA SPP | 2,528 | kWp | İSTANBUL | ESENYURT SPP | 474 | kWp |
| UŞAK | ÖZEĞE TEKSTİL SPP | 2,476 | kWp | MALATYA | MİRAM OTOMOTİV SPP | 470 | kWp |
| GAZİANTEP | ÇABUK AMBALAJ SPP | 2,431 | kWp | ADANA | KÖSEÖĞLU AĞRO TARIM SPP | 437 | kWp |
| ADANA | PALMIYE TEKSTİL SPP | 2,400 | kWp | ZONGULDAK | ÇANAĞÇILAR CREATİV ECO SPP | 432 | kWp |
| KONYA | KON-ET SPP | 2,334 | kWp | ADANA | ADAWALL SPP 2 | 407 | kWp |
| K, MARAŞ | AKYILDIZ MUTFAK SPP | 2,318 | kWp | ANKARA | OLİMPİYAT İSİ SPP | 404 | kWp |
| KAYSERİ | ERCİYES FORM SÜNGER SPP | 2,300 | kWp | MALATYA | YİĞİTLER OTOMOTİV SPP | 402 | kWp |
| ADANA | OĞUZ TEKSTİL 1 SPP | 2,278 | kWp | GAZİANTEP | HUZUR TEL SPP | 390 | kWp |
| ADANA | OĞUZ TEKSTİL 2 SPP | 2,199 | kWp | KAYSERİ | ERCİYES BELLONA PAZ, SPP | 388 | kWp |
| K, MARAŞ | ISKUR DENİM SPP | 2,180 | kWp | K, MARAŞ | İNG BANK SPP | 379 | kWp |
| GAZİANTEP | FLAMİNO SPP | 2,140 | kWp | MERSİN | BERDAN CİVATA 6 SPP | 358 | kWp |
| KÜTAHYA | ALPİNO MOBİLYA SPP | 2,107 | kWp | İZMİR | EGE POYRAZ CAM SPP | 320 | kWp |
| ADANA | ERBEY DOKUMA SPP | 2,078 | kWp | MALATYA | BİR DAMLA SPP | 300 | kWp |
| OSMANİYE | BONİP TEKSTİL SPP | 1,944 | kWp | KONYA | ŞEVKET ÖZLÜ TARIM SPP | 295 | kWp |
| TRABZON | GÜNDOĞDU MOBİLYA SPP | 1,889 | kWp | ANTALYA | TOPUZ İMALAT SPP | 288 | kWp |
| BİLECİK | ECZACIBAŞI ARTEMA SPP | 1,870 | kWp | KOCAELİ | BİZİM TOPTAN SPP | 264 | kWp |
| MUĞLA | GÜLLÜK SPP | 1,851 | kWp | ADANA | VERİ MERKEZİ SPP | 250 | kWp |
| ŞANLIURFA | EYVAN TEKSTİL SPP | 1,814 | kWp | ADANA | ATLAS FİDE SPP | 205 | kWp |
| BURSA | ERŞAT TEKSTİL 2 SPP | 1,776 | kWp | ADANA | ŞAHİNAĞA BERKMEN ÇATI SPP | 182 | kWp |
| GAZİANTEP | İKRA GIDA SPP | 1,758 | kWp | ADANA | LMC SPP | 145 | kWp |
| ADANA | ABDİÖĞULLARI PLASTİK 2 SPP | 1,746 | kWp | ÇANAĞÇILAR | HİDROÇAN DAMPER SPP | 130 | kWp |
| DIYARBAKIR | ISKUR İPLİK SPP | 1,714 | kWp | KONYA | TATLI LİMON SPP | 123 | kWp |
| ADANA | OĞUZ GIDA STARKON SPP | 1,627 | kWp | KOCAELİ | COLGATE-PALMOLİVE SPP | 101 | kWp |
| ADANA | ÇOKYAŞAR TEL SPP | 1,557 | kWp | KONYA | KAMER KOLEJİ SPP | 77 | kWp |
| BİLECİK | HEPŞEN METAL SPP | 1,515 | kWp | ADANA | GÖKBORA LOJİSTİK SPP | 72 | kWp |
| İSTANBUL | BAYKAR TEKNOLOJİ SPP | 1,487 | kWp | SİVAS | YO-RE KÖMÜR SPP | 52 | kWp |
| MERSİN | SEÇİL KAUKÇUK 2 SPP | 1,450 | kWp | ADANA | TEKFEN İNŞAAT SPP | 47 | kWp |
| MANİSA | ÇELŞAN ZİRAAT 1 SPP | 1,424 | kWp | İSTANBUL | EKSİM HOLDİNG SPP | 41 | kWp |
| GAZİANTEP | DURMAZ ÇELİK SPP | 1,411 | kWp | İSTANBUL | BOYBO TEKSTİL SPP | 40 | kWp |
| ZONGULDAK | ÇANAĞÇILAR DOXA SPP | 1,360 | kWp | İTİLİS | ALASPP/ADİLCEVAZ SPP | 24,193 | kWp |
| NİĞDE | AKMİNA MAKİNE TEKSTİL SPP | 1,333 | kWp | VAN | BAŞKALE SPP | 13,701 | kWp |
| MERSİN | MESKİ KISIM 2-TOROSLAR SPP | 1,303 | kWp | DIYARBAKIR | KESENTAŞ SPP | 12,415 | kWp |
| İSTANBUL | SERTPLAS SPP | 1,298 | kWp | ERZURUM | ERZURUM - AŞKALE SPP | 8,467 | kWp |
| ADANA | ADAWALL SPP | 1,277 | kWp | AGRİ | SUÇATAĞI SPP | 7,020 | kWp |
| AKSARAY | MERCEDES BENZ SPP-2 | 1,273 | kWp | YOZGAT | SARAYKÖY SPP | 6,415 | kWp |
| KAYSERİ | MİLKAY TEKNİK TEKSTİL SPP | 1,266 | kWp | OSMANİYE | DUZİÇİ SPP | 5,799 | kWp |
| ADANA | ABDİÖĞULLARI PLASTİK 7 SPP | 1,261 | kWp | OSMANİYE | YAVERİYE SPP | 5,789 | kWp |
| DUZCE | ÇOKYAŞAR HALAT SPP | 1,253 | kWp | KONYA | KULU DOĞUTEPE SPP | 4,722 | kWp |
| KOCAELİ | MPS METAL SPP | 1,253 | kWp | ADANA | BURUK SPP | 3,984 | kWp |
| K, MARAŞ | RİMSA TEKSTİL SPP | 1,250 | kWp | İZMİR | İZMİR - DEREKÖY SPP | 3,533 | kWp |
| ADANA | EPAŞ DÖKÜM SPP | 1,249 | kWp | AKSARAY | BİYOSAN SPP | 2,390 | kWp |
| İSTANBUL | DENİZPEN PLASTİK SPP | 1,231 | kWp | İZMİR | KİRAZ SPP | 2,218 | kWp |
| UŞAK | BEPÄ GERİ DÖNÜŞÜM SPP | 1,227 | kWp | İZMİR | BAĞARASI SPP | 2,138 | kWp |
| TEKİRDAĞ | AKEL SUNİ DERİ 1 SPP | 1,216 | kWp | NEVŞEHİR | KARAPINAR SPP | 2,138 | kWp |
| UŞAK | KUYUCAK BATTANİYE SPP | 1,190 | kWp | ESKİŞEHİR | ESKİŞEHİR - KAVACIK SPP | 1,600 | kWp |
| BURSA | İŞİKSOY TEKSTİL MERKEZ SPP | 1,167 | kWp | BALIKESİR | MARMARA ADALAR SPP | 1,140 | kWp |
| ADANA | ABDİÖĞULLARI PLASTİK 1 SPP | 1,164 | kWp | AFYON | GAZLİGÖL SPP | 1,069 | kWp |
| UŞAK | AY TEKSTİL SPP | 1,149 | kWp | NEVŞEHİR | AKMİNA MİLKAY 2 SPP | 256 | kWp |
| TEKİRDAĞ | AKEL SUNİ DERİ 2 SPP | 1,148 | kWp | ADANA | ÖZBALTU SPP | 249 | kWp |
| DENİZLİ | YONGA MOBİLYA SPP | 1,133 | kWp | MANİSA | KÜTAŞ TARIM SPP | 240 | kWp |
| ANKARA | OSMANLI REKLAM SPP | 1,105 | kWp | MUĞLA | ÇAVUŞ ADASI RADAR İST, SPP | 117 | kWp |
| UŞAK | KYC 1 TEKSTİL SPP | 1,100 | kWp | ADANA | TARHAN BERKMEN SPP | 71 | kWp |
| KOCAELİ | CPS PRESSFORM SPP | 1,099 | kWp | ADANA | TUMEN TARIM SPP | 60 | kWp |

COMPLETED
SPP PROJECTS
TOTAL POWER



ONGOING
SPP PROJECTS
TOTAL POWER



COMPLETED
WPP PROJECTS
TOTAL POWER



ONGOING PROJECTS

| | | | | | |
|----------------|----------------------------|-------------------|---------------|---------------------------|----------------|
| BİNGÖL | METAFOR HYBRID SPP (LAND) | 49,492 kWp | MANİSA | ÇELSAN ZİRAAT 2 SPP | 816 kWp |
| AĞRI | YAKAAĞZI HYBRID SPP (LAND) | 29,996 kWp | MUĞLA | YDA HAVALİMANI SPP (LAND) | 759 kWp |
| ADANA | ÖZ-ÖKMENLER SPP | 952 kWp | MANİSA | ARDAHAN ET SPP | 520 kWp |
| SAKARYA | SUMOTEKS 1 SPP (LAND) | 885 kWp | | | |

WPP PROJECTS

| | | |
|----------------|----------------|-----------------|
| ÇANKIRI | ÇERKEŞ WPP | 50,4 MWm |
| BİNGÖL | METAFOR WPP | 49,7 MWm |
| SİNOP | HAMSI WPP | 37,8 MWm |
| KOCAELİ | KARAMÜRSEL WPP | 33,6 MWm |
| AĞRI | YAKAAĞZI WPP | 33,6 MWm |
| SİNOP | FENER WPP | 4,2 MWm |

BPP PROJECTS

| | | |
|----------------|--------------------------|-------------------|
| AKSARAY | BIYOSAN (BPP+SPP HYBRID) | 19,199 kWp |
| EDİRNE | SK GOLD BPP | 16,8 MWm |



ROOFTOP PROJECTS



BİLECİK

ECZACIBAŞI VİTRA SPP

6,402 kWp

 Eczacıbaşı



PROJECT'S INSTALLED CAPACITY

AC: 4,950 kWe DC: 6,402 kWp



ANNUAL ENERGY PRODUCTION

7,848,660 kWh



TOTAL NUMBER OF HOUSEHOLD CONSUMPTION UNITS EQUAL TO THE CAPACITY

2,585 Households



NUMBER OF PANELS USED

11,640 Panel



AMOUNT OF GREENHOUSE GAS EMISSIONS AVOIDED

3,688,900 kg.



DATE OF COMMISSIONING

09/05/2024



AKSARAY

MERCEDES BENZ SPP-1

6,195 kWp



Mercedes-Benz



PROJECT'S INSTALLED CAPACITY

AC: 5,000 kWe DC: 6,195 kWp



ANNUAL ENERGY PRODUCTION

9,648,850 kWh



TOTAL NUMBER OF HOUSEHOLD CONSUMPTION UNITS EQUAL TO THE CAPACITY

3,178 Households



NUMBER OF PANELS USED

13,616 Panel



AMOUNT OF GREENHOUSE GAS EMISSIONS AVOIDED

4,535,000 kg.



DATE OF COMMISSIONING

16/04/2024



ADANA

BOSSA NEW FACTORY SPP

5,317 kWp

Bossa



PROJECT'S INSTALLED CAPACITY

AC: 4,100 kWe DC: 5,317 kWp



ANNUAL ENERGY PRODUCTION

7,500,300 kWh



TOTAL NUMBER OF HOUSEHOLD CONSUMPTION UNITS EQUAL TO THE CAPACITY

2,470 Households



NUMBER OF PANELS USED

12,366 Panel



AMOUNT OF GREENHOUSE GAS EMISSIONS AVOIDED

3,525,000 kg.



DATE OF COMMISSIONING

22/07/2024



KAHRAMANMARAŞ

ING BANK SPP

379 kWp

ING



PROJECT'S INSTALLED CAPACITY

AC: 360 kWe DC: 379 kWp



ANNUAL ENERGY PRODUCTION

556,887 kWh



TOTAL NUMBER OF HOUSEHOLD CONSUMPTION UNITS EQUAL TO THE CAPACITY

183 Households



NUMBER OF PANELS USED

972 Panel



AMOUNT OF GREENHOUSE GAS EMISSIONS AVOIDED

261,737 kg.



DATE OF COMMISSIONING

25/01/2021



BURSA

TOGG SPP

14,980 kWp



PROJECT'S INSTALLED CAPACITY

AC: 13.170 kWe DC: 14,980 kWp



ANNUAL ENERGY PRODUCTION

18,191,160 kWh



TOTAL NUMBER OF HOUSEHOLD CONSUMPTION UNITS EQUAL TO THE CAPACITY

5,992 Households



NUMBER OF PANELS USED

27,364 Panels



AMOUNT OF GREENHOUSE GAS EMISSIONS AVOIDED

8,558,800 kg.



DATE OF COMMISSIONING

25/11/2024



KAHRAMANMARAŞ

ISKUR TEKSTİL SPP

9,448 kWp



PROJECT'S INSTALLED CAPACITY

AC: 8,400 kWe DC: 9,448 kWp



ANNUAL ENERGY PRODUCTION

13,104,680 kWh



TOTAL NUMBER OF HOUSEHOLD CONSUMPTION UNITS EQUAL TO THE CAPACITY

4,316 Households



NUMBER OF PANELS USED

22,230 Panels



AMOUNT OF GREENHOUSE GAS EMISSIONS AVOIDED

6,158,302 kg.



DATE OF COMMISSIONING

07/01/2022



KONYA

BÜROTIME SPP

7,139 kWp

bürotime



PROJECT'S INSTALLED CAPACITY
AC: 5,000 kWe DC: 7,139 kWp



ANNUAL ENERGY PRODUCTION
10,086,594 kWh



TOTAL NUMBER OF HOUSEHOLD CONSUMPTION UNITS EQUAL TO THE CAPACITY
3,323 Households



NUMBER OF PANELS USED
16,884 Panels



AMOUNT OF GREENHOUSE GAS EMISSIONS AVOIDED
4,740,390 kg.



DATE OF COMMISSIONING
12/05/2021



ADANA

BOSSA SPP

11,740 kWp

Bossa



PROJECT'S INSTALLED CAPACITY
9,000 kWe / 11,740 kWp



ANNUAL ENERGY PRODUCTION
14,346,845 kWh



TOTAL NUMBER OF HOUSEHOLD CONSUMPTION UNITS EQUAL TO THE CAPACITY
4,726 Households



NUMBER OF PANELS USED
29,214 Panels



AMOUNT OF GREENHOUSE GAS EMISSIONS AVOIDED
8,607,049 kg.



DATE OF COMMISSIONING
24/09/2020



ADANA

ATLAS DENİM TEKSTİL SPP

6,225 kWp



PROJECT'S INSTALLED CAPACITY
AC: 4,995,60 kWe DC: 6,225 kWp



ANNUAL ENERGY PRODUCTION
7,621,013 kWh



TOTAL NUMBER OF HOUSEHOLD CONSUMPTION UNITS EQUAL TO THE CAPACITY
2,510 Households



NUMBER OF PANELS USED
19,454 Panels



AMOUNT OF GREENHOUSE GAS EMISSIONS AVOIDED
4,572,607 kg.



DATE OF COMMISSIONING
29/07/2020



ADANA

OĞUZ TEKSTİL 3 SPP

6,268 kWp



PROJECT'S INSTALLED CAPACITY
AC: 4,833 kWe DC: 6,268 kWp



ANNUAL ENERGY PRODUCTION
7,926,934 kWh



TOTAL NUMBER OF HOUSEHOLD CONSUMPTION UNITS EQUAL TO THE CAPACITY
2,611 Households



NUMBER OF PANELS USED
14,888 Panels



AMOUNT OF GREENHOUSE GAS EMISSIONS AVOIDED
3,723,535 kg.



DATE OF COMMISSIONING
15/02/2021



SAMSUN

YEŞİL KÜRE SPP

5,183 kWp



PROJECT'S INSTALLED CAPACITY
AC: 3,996 kWe DC: 5,183 kWp



ANNUAL ENERGY PRODUCTION
6,306,000 kWh



TOTAL NUMBER OF HOUSEHOLD CONSUMPTION UNITS EQUAL TO THE CAPACITY
2,077 Households



NUMBER OF PANELS USED
16,720 Panels



AMOUNT OF GREENHOUSE GAS EMISSIONS AVOIDED
3,783,600 kg.



DATE OF COMMISSIONING
16/11/2019



KAHRAMANMARAŞ

MARİTAŞ TEKSTİL SPP

5,112 kWp

MARİTAŞ | TEKSTİL



PROJECT'S INSTALLED CAPACITY
AC: 4,200 kWe DC: 5,112 kWp



ANNUAL ENERGY PRODUCTION
7,489,631 kWh



TOTAL NUMBER OF HOUSEHOLD CONSUMPTION UNITS EQUAL TO THE CAPACITY
2,452 Households



NUMBER OF PANELS USED
12,780 Panels



AMOUNT OF GREENHOUSE GAS EMISSIONS AVOIDED
4,466,779 kg.



DATE OF COMMISSIONING
27/05/2021



GAZIANTEP

KEVSER HALI SPP

3,824 kWp



PROJECT'S INSTALLED CAPACITY
AC: 3,146,4 kWe DC: 3,824 kWp



ANNUAL ENERGY PRODUCTION
5,740,233 kWh



TOTAL NUMBER OF HOUSEHOLD CONSUMPTION UNITS EQUAL TO THE CAPACITY
1,891 Households



NUMBER OF PANELS USED
9,560 Panels



AMOUNT OF GREENHOUSE GAS EMISSIONS AVOIDED
3,444,140 kg.



DATE OF COMMISSIONING
05/05/2021

KONYA

BÜROTIME 2 SPP

3,358 kWp



PROJECT'S INSTALLED CAPACITY
AC: 2,500 kWe DC: 3,358 kWp



ANNUAL ENERGY PRODUCTION
4,897,902 kWh



TOTAL NUMBER OF HOUSEHOLD CONSUMPTION UNITS EQUAL TO THE CAPACITY
1,613 Households



NUMBER OF PANELS USED
7,902 Panels



AMOUNT OF GREENHOUSE GAS EMISSIONS AVOIDED
2,302,014 kg.



DATE OF COMMISSIONING
12/05/2021

KAHRAMANMARAŞ

İSKUR MODENA SPP

2,528 kWp



PROJECT'S INSTALLED CAPACITY
AC: 2,420 kW_e DC: 2,528 kW_p



ANNUAL ENERGY PRODUCTION
3,534,249 kWh



TOTAL NUMBER OF HOUSEHOLD CONSUMPTION UNITS EQUAL TO THE CAPACITY
1,164 Households



NUMBER OF PANELS USED
5,949 Panels



AMOUNT OF GREENHOUSE GAS EMISSIONS AVOIDED
1,660,826 kg.



DATE OF COMMISSIONING
25/03/2022



ADANA

PALMIYE TEKSTİL SPP

2,400 kWp



PROJECT'S INSTALLED CAPACITY
AC: 2,000 kW_e DC: 2,400 kW_p



ANNUAL ENERGY PRODUCTION
2,895,749 kWh



TOTAL NUMBER OF HOUSEHOLD CONSUMPTION UNITS EQUAL TO THE CAPACITY
954 Households



NUMBER OF PANELS USED
7,500 Panels



AMOUNT OF GREENHOUSE GAS EMISSIONS AVOIDED
1,737,449 kg.



DATE OF COMMISSIONING
22/06/2020



KONYA

KONET SPP

2,334 kWp



PROJECT'S INSTALLED CAPACITY
AC: 2,046 kWe DC: 2,334 kWp



ANNUAL ENERGY PRODUCTION
3,252,290 kWh



TOTAL NUMBER OF HOUSEHOLD CONSUMPTION UNITS EQUAL TO THE CAPACITY
1,071 Households



NUMBER OF PANELS USED
5,836 Panels



AMOUNT OF GREENHOUSE GAS EMISSIONS AVOIDED
1,527,965 kg.



DATE OF COMMISSIONING
15/11/2021



ADANA

ABDİOĞULLARI PLASTİK 8 SPP

7,391 kWp



PROJECT'S INSTALLED CAPACITY
AC: 6,210 kWe DC: 7,391 kWp



ANNUAL ENERGY PRODUCTION
8,948,642 kWh



TOTAL NUMBER OF HOUSEHOLD CONSUMPTION UNITS EQUAL TO THE CAPACITY
2,948 Households



NUMBER OF PANELS USED
18,760 Panels



AMOUNT OF GREENHOUSE GAS EMISSIONS AVOIDED
4,659,404 kg.



DATE OF COMMISSIONING
04/02/2021



ADANA

OĞUZ TEKSTİL 2 SPP

2,199 kWp



PROJECT'S INSTALLED CAPACITY

AC: 1,821,60 kWe DC: 2,199 kWp



ANNUAL ENERGY PRODUCTION

2,803,554 kWh



TOTAL NUMBER OF HOUSEHOLD CONSUMPTION UNITS EQUAL TO THE CAPACITY

923 Households



NUMBER OF PANELS USED

5,236 Panels



AMOUNT OF GREENHOUSE GAS EMISSIONS AVOIDED

1,317,670 kg.



DATE OF COMMISSIONING

12/01/2021



KAHRAMANMARAŞ

ISKUR DENİM SPP

2,180 kWp



PROJECT'S INSTALLED CAPACITY

AC: 2,000 kWe DC: 2,180 kWp



ANNUAL ENERGY PRODUCTION

3,049,683 kWh



TOTAL NUMBER OF HOUSEHOLD CONSUMPTION UNITS EQUAL TO THE CAPACITY

1,005 Households



NUMBER OF PANELS USED

5,130 Panels



AMOUNT OF GREENHOUSE GAS EMISSIONS AVOIDED

1,433,137 kg.



DATE OF COMMISSIONING

07/01/2022



GAZİANTEP

FLAMENT SPP

2,140 kWp



PROJECT'S INSTALLED CAPACITY
AC: 1,821,60 kWe DC: 2,140 kWp



ANNUAL ENERGY PRODUCTION
3,362,998 kWh



TOTAL NUMBER OF HOUSEHOLD CONSUMPTION UNITS EQUAL TO THE CAPACITY
1,108 Households



NUMBER OF PANELS USED
5,096 Panels



AMOUNT OF GREENHOUSE GAS EMISSIONS AVOIDED
1,580,609 kg.



DATE OF COMMISSIONING
28/12/2020



ADANA

ERBEY DOKUMA SPP

2,078 kWp



PROJECT'S INSTALLED CAPACITY
AC: 1,656 kWe DC: 2,078 kWp



ANNUAL ENERGY PRODUCTION
2,664,587 kWh



TOTAL NUMBER OF HOUSEHOLD CONSUMPTION UNITS EQUAL TO THE CAPACITY
878 Households



NUMBER OF PANELS USED
5,196 Panels



AMOUNT OF GREENHOUSE GAS EMISSIONS AVOIDED
1,252,356 kg.



DATE OF COMMISSIONING
02/11/2020



GAZİANTEP

İKRA GIDA SPP

1,758 kWp

ikra



PROJECT'S INSTALLED CAPACITY

AC: 1,380 kWe DC: 1,758 kWp



ANNUAL ENERGY PRODUCTION

2,665,684 kWh



TOTAL NUMBER OF HOUSEHOLD CONSUMPTION UNITS EQUAL TO THE CAPACITY

878 Households



NUMBER OF PANELS USED

4,396 Panels



AMOUNT OF GREENHOUSE GAS EMISSIONS AVOIDED

1,252,872 kg.



DATE OF COMMISSIONING

22/01/2021



ADANA

ABDİOĞULLARI PLASTİK 2 SPP

1,746 kWp



ABDİOĞULLARI
PLASTİK VE AMBALAJ SANAYİ A.Ş.



PROJECT'S INSTALLED CAPACITY

AC: 1,490,40 kWe DC: 1,746 kWp



ANNUAL ENERGY PRODUCTION

2,060,353 kWh



TOTAL NUMBER OF HOUSEHOLD CONSUMPTION UNITS EQUAL TO THE CAPACITY

679 Households



NUMBER OF PANELS USED

4,536 Panels



AMOUNT OF GREENHOUSE GAS EMISSIONS AVOIDED

1,236,212 kg.



DATE OF COMMISSIONING

22/06/2020



DİYARBAKIR

İSKUR İPLİK SPP

1,714 kWp



PROJECT'S INSTALLED CAPACITY
AC: 1,400 kWe DC: 1,713,60 kWp



ANNUAL ENERGY PRODUCTION
2,167,207 kWh



TOTAL NUMBER OF HOUSEHOLD CONSUMPTION UNITS EQUAL TO THE CAPACITY
714 Households



NUMBER OF PANELS USED
4,032 Panels



AMOUNT OF GREENHOUSE GAS EMISSIONS AVOIDED
1,018,434 kg.



DATE OF COMMISSIONING
10/01/2022



ADANA

OĞUZ GIDA STARKON SPP

1,627 kWp



PROJECT'S INSTALLED CAPACITY
AC: 1,200 kWe DC: 1,627 kWp



ANNUAL ENERGY PRODUCTION
1,891,614 kWh



TOTAL NUMBER OF HOUSEHOLD CONSUMPTION UNITS EQUAL TO THE CAPACITY
623 Households



NUMBER OF PANELS USED
4,068 Panels



AMOUNT OF GREENHOUSE GAS EMISSIONS AVOIDED
88,935 kg.



DATE OF COMMISSIONING
1/11/2021



MERSİN

SEÇİL KAUÇUK 2 SPP
1,450 kWp



PROJECT'S INSTALLED CAPACITY
AC: 1,200 kWe DC: 1,450 kWp



ANNUAL ENERGY PRODUCTION
1,813,138 kWh



TOTAL NUMBER OF HOUSEHOLD CONSUMPTION UNITS EQUAL TO THE CAPACITY
597 Households



NUMBER OF PANELS USED
3,258 Panels



AMOUNT OF GREENHOUSE GAS EMISSIONS AVOIDED
852,041 kg.



DATE OF COMMISSIONING
18/11/2021



ADANA

OĞUZ TEKSTİL 1 SPP
2,278 kWp



PROJECT'S INSTALLED CAPACITY
AC: 1,100 kWe DC: 2,278 kWp



ANNUAL ENERGY PRODUCTION
1,799,260 kWh



TOTAL NUMBER OF HOUSEHOLD CONSUMPTION UNITS EQUAL TO THE CAPACITY
593 Households



NUMBER OF PANELS USED
3,360 Panels



AMOUNT OF GREENHOUSE GAS EMISSIONS AVOIDED
845,652 kg.



DATE OF COMMISSIONING
15/02/2021



GAZİANTEP

DURMAZ ÇELİK SPP

1,411 kWp

DURMAZ
ÇELİK



PROJECT'S INSTALLED CAPACITY
AC: 1,118 kWe DC: 1,411 kWp



ANNUAL ENERGY PRODUCTION
2,171,247 kWh



TOTAL NUMBER OF HOUSEHOLD CONSUMPTION UNITS EQUAL TO THE CAPACITY
715 Households



NUMBER OF PANELS USED
3,528 Panels



AMOUNT OF GREENHOUSE GAS EMISSIONS AVOIDED
1,020,486 kg.



DATE OF COMMISSIONING
05/05/2021



NIĞDE

AKMİNA MAKİNE TEKSTİL SPP

1,333 kWp

akmina



PROJECT'S INSTALLED CAPACITY
AC: 1,076,40 kWe DC: 1,333 kWp



ANNUAL ENERGY PRODUCTION
2,096,394 kWh



TOTAL NUMBER OF HOUSEHOLD CONSUMPTION UNITS EQUAL TO THE CAPACITY
691 Households



NUMBER OF PANELS USED
3,332 Panels



AMOUNT OF GREENHOUSE GAS EMISSIONS AVOIDED
985,305 kg.



DATE OF COMMISSIONING
09/12/2020



MERSİN

MESKİ 2 SPP

1,303 kWp



PROJECT'S INSTALLED CAPACITY
AC: 1,200 kWe DC: 1,303 kWp



ANNUAL ENERGY PRODUCTION
1,745,109 kWh



TOTAL NUMBER OF HOUSEHOLD CONSUMPTION UNITS EQUAL TO THE CAPACITY
575 Households



NUMBER OF PANELS USED
3,257 Panels



AMOUNT OF GREENHOUSE GAS EMISSIONS AVOIDED
820,075 kg.



DATE OF COMMISSIONING
17/12/2021



ADANA

ADAWALL SPP

1,277 kWp



PROJECT'S INSTALLED CAPACITY
AC: 1,104 kWe DC: 1,277 kWp



ANNUAL ENERGY PRODUCTION
1,556,408 kWh



TOTAL NUMBER OF HOUSEHOLD CONSUMPTION UNITS EQUAL TO THE CAPACITY
513 Households



NUMBER OF PANELS USED
3,192 Panels



AMOUNT OF GREENHOUSE GAS EMISSIONS AVOIDED
731,512 kg.



DATE OF COMMISSIONING
26/02/2021



KAYSERİ

MİLKAY TEKNİK TEKSTİL (AKELYAF) SPP

1,266 kWp



PROJECT'S INSTALLED CAPACITY

AC: 1,048,80 kWe DC: 1,266 kWp



ANNUAL ENERGY PRODUCTION

1,806,665 kWh



TOTAL NUMBER OF HOUSEHOLD CONSUMPTION UNITS EQUAL TO THE CAPACITY

595 Households



NUMBER OF PANELS USED

3,164 Panels



AMOUNT OF GREENHOUSE GAS EMISSIONS AVOIDED

849,132 kg.



DATE OF COMMISSIONING

13/11/2020



ADANA

ABDİOĞULLARI PLASTİK 7 SPP

1,261 kWp



ABDİOĞULLARI
PLASTİK VE AMBALAJ SANAYİ A.Ş.



PROJECT'S INSTALLED CAPACITY

AC: 1,076,40 kWe DC: 1,261 kWp



ANNUAL ENERGY PRODUCTION

1,483,116 kWh



TOTAL NUMBER OF HOUSEHOLD CONSUMPTION UNITS EQUAL TO THE CAPACITY

489 Households



NUMBER OF PANELS USED

3,276 Panels



AMOUNT OF GREENHOUSE GAS EMISSIONS AVOIDED

889,870 kg.



DATE OF COMMISSIONING

29/07/2020



KAHRAMANMARAŞ

RİMSA TEKSTİL SPP

1,250 kWp

RİMSA
Denimaxx
M-BLUE



PROJECT'S INSTALLED CAPACITY
AC: 1,104 kWe DC: 1,250 kWp



ANNUAL ENERGY PRODUCTION
1,765,742 kWh



TOTAL NUMBER OF HOUSEHOLD CONSUMPTION UNITS EQUAL TO THE CAPACITY
582 Households



NUMBER OF PANELS USED
3,248 Panels



AMOUNT OF GREENHOUSE GAS EMISSIONS AVOIDED
1,059,445 kg.



DATE OF COMMISSIONING
11/08/2020



BURSA

İŞIKSOY TEKSTİL SPP

1,167 kWp

İŞIKSOY



PROJECT'S INSTALLED CAPACITY
AC: 993,60 kWe DC: 1,166 kWp



ANNUAL ENERGY PRODUCTION
1,329,575 kWh



TOTAL NUMBER OF HOUSEHOLD CONSUMPTION UNITS EQUAL TO THE CAPACITY
438 Households



NUMBER OF PANELS USED
2,812 Panels



AMOUNT OF GREENHOUSE GAS EMISSIONS AVOIDED
624,602 kg.



DATE OF COMMISSIONING
26/11/2021



ADANA

ABDİOĞULLARI PLASTİK 1 SPP

1,164 kWp



ABDİOĞULLARI
PLASTİK VE AMBALAJ SANAYİ A.Ş.



PROJECT'S INSTALLED CAPACITY

AC: 993,60 kWe DC: 1,164 kWp



ANNUAL ENERGY PRODUCTION

1,384,644 kWh



TOTAL NUMBER OF HOUSEHOLD CONSUMPTION UNITS EQUAL TO THE CAPACITY

456 Households



NUMBER OF PANELS USED

3,024 Panels



AMOUNT OF GREENHOUSE GAS EMISSIONS AVOIDED

830,787 kg.



DATE OF COMMISSIONING

29/07/2020



DENİZLİ

YONGA MOBİLYA SPP

1,133 kWp



PROJECT'S INSTALLED CAPACITY

AC: 840 kWe DC: 1,133 kWp



ANNUAL ENERGY PRODUCTION

1,501,929 kWh



TOTAL NUMBER OF HOUSEHOLD CONSUMPTION UNITS EQUAL TO THE CAPACITY

495 Households



NUMBER OF PANELS USED

2,576 Panels



AMOUNT OF GREENHOUSE GAS EMISSIONS AVOIDED

705,652 kg.



DATE OF COMMISSIONING

27/12/2021



MERSİN

TÜMEN TARIM SPP

1,042 kWp



PROJECT'S INSTALLED CAPACITY

AC: 855,60 kWe DC: 1,042 kWp



ANNUAL ENERGY PRODUCTION

1,365,934 kWh



TOTAL NUMBER OF HOUSEHOLD CONSUMPTION UNITS EQUAL TO THE CAPACITY

450 Households



NUMBER OF PANELS USED

2,604 Panels



AMOUNT OF GREENHOUSE GAS EMISSIONS AVOIDED

819,560 kg.



DATE OF COMMISSIONING

11/01/2021



MERSİN

SEÇİL KAUÇUK 1 SPP

969 kWp



PROJECT'S INSTALLED CAPACITY

AC: 700 kWe DC: 969 kWp



ANNUAL ENERGY PRODUCTION

1,249,561 kWh



TOTAL NUMBER OF HOUSEHOLD CONSUMPTION UNITS EQUAL TO THE CAPACITY

412 Households



NUMBER OF PANELS USED

2,178 Panels



AMOUNT OF GREENHOUSE GAS EMISSIONS AVOIDED

587,216 kg.



DATE OF COMMISSIONING

18/11/2021



UŞAK

BEPA GERİ DÖNÜŞÜM SPP
1,227 kWp



PROJECT'S INSTALLED CAPACITY
AC: 940 kWe DC: 1,227 kWp



ANNUAL ENERGY PRODUCTION
1,702,351 kWh



TOTAL NUMBER OF HOUSEHOLD CONSUMPTION UNITS EQUAL TO THE CAPACITY
561 Households



NUMBER OF PANELS USED
2,718 Panels



AMOUNT OF GREENHOUSE GAS EMISSIONS AVOIDED
800,009 kg.



DATE OF COMMISSIONING
25/02/2022

MERSİN

MESKİ 3 SPP
838 kWp



PROJECT'S INSTALLED CAPACITY
AC: 756 kWe DC: 838 kWp



ANNUAL ENERGY PRODUCTION
1,110,896 kWh



TOTAL NUMBER OF HOUSEHOLD CONSUMPTION UNITS EQUAL TO THE CAPACITY
366 Households



NUMBER OF PANELS USED
2,095 Panels



AMOUNT OF GREENHOUSE GAS EMISSIONS AVOIDED
522,038 kg.



DATE OF COMMISSIONING
07/12/2021

MUĞLA

GÜLPÖRT SPP

797 kWp



PROJECT'S INSTALLED CAPACITY
AC: 600 kWe DC: 797 kWp



ANNUAL ENERGY PRODUCTION
1,269,000 kWh



TOTAL NUMBER OF HOUSEHOLD CONSUMPTION UNITS EQUAL TO THE CAPACITY
418 Households



NUMBER OF PANELS USED
1,792 Panels



AMOUNT OF GREENHOUSE GAS EMISSIONS AVOIDED
596,154 kg.



DATE OF COMMISSIONING
02/03/2022

MERSİN

MESKİ 1 SPP

680 kWp



PROJECT'S INSTALLED CAPACITY
AC: 550 kWe DC: 680 kWp



ANNUAL ENERGY PRODUCTION
917,405 kWh



TOTAL NUMBER OF HOUSEHOLD CONSUMPTION UNITS EQUAL TO THE CAPACITY
302 Households



NUMBER OF PANELS USED
1,700 Panels



AMOUNT OF GREENHOUSE GAS EMISSIONS AVOIDED
424,103 kg.



DATE OF COMMISSIONING
02/11/2021

TEKİRDAĞ

RAN TEKSTİL SPP

589 kWp



PROJECT'S INSTALLED CAPACITY
AC: 579,60 kW_e DC: 589 kW_p



ANNUAL ENERGY PRODUCTION
611,132 kWh



TOTAL NUMBER OF HOUSEHOLD CONSUMPTION UNITS EQUAL TO THE CAPACITY
201 Households



NUMBER OF PANELS USED
1,472 Panels



AMOUNT OF GREENHOUSE GAS EMISSIONS AVOIDED
287,061 kg.



DATE OF COMMISSIONING
25/03/2022



BURSA

İŞIKSOY TEKSTİL TEKSTÜRİZE SPP

558 kWp



PROJECT'S INSTALLED CAPACITY
AC: 441,60 kW_e DC: 558 kW_p



ANNUAL ENERGY PRODUCTION
648,117 kWh



TOTAL NUMBER OF HOUSEHOLD CONSUMPTION UNITS EQUAL TO THE CAPACITY
213 Households



NUMBER OF PANELS USED
1,344 Panels



AMOUNT OF GREENHOUSE GAS EMISSIONS AVOIDED
304,484 kg.



DATE OF COMMISSIONING
07/01/2022



BALIKESİR

SAĞLAM METAL SPP

557 kWp

///SAGLAM///METAL///
Metal Sağlamdır...



PROJECT'S INSTALLED CAPACITY
AC: 441,60 kWe DC: 557 kWp



ANNUAL ENERGY PRODUCTION
619,302 kWh



TOTAL NUMBER OF HOUSEHOLD CONSUMPTION UNITS EQUAL TO THE CAPACITY
204 Households



NUMBER OF PANELS USED
1,392 Panels



AMOUNT OF GREENHOUSE GAS EMISSIONS AVOIDED
291,072 kg.



DATE OF COMMISSIONING
25/11/2021



İSTANBUL

ESENYURT SPP

474 kWp



PROJECT'S INSTALLED CAPACITY
AC: 386,40 kWe DC: 474 kWp



ANNUAL ENERGY PRODUCTION
621,972 kWh



TOTAL NUMBER OF HOUSEHOLD CONSUMPTION UNITS EQUAL TO THE CAPACITY
205 Households



NUMBER OF PANELS USED
1,424 Panels



AMOUNT OF GREENHOUSE GAS EMISSIONS AVOIDED
292,326 kg.



DATE OF COMMISSIONING
15/01/2021



ADANA

KÖSEOĞLU AGRO TARIM SPP

437 kWp

KÖSEOĞLU AGRO

Tarım Ürünleri Lisanslı Depoculuk A.Ş.



PROJECT'S INSTALLED CAPACITY

AC: 350 kW_e DC: 437 kW_p



ANNUAL ENERGY PRODUCTION

558,866 kWh



TOTAL NUMBER OF HOUSEHOLD CONSUMPTION UNITS EQUAL TO THE CAPACITY

184 Households



NUMBER OF PANELS USED

1,092 Panels



AMOUNT OF GREENHOUSE GAS EMISSIONS AVOIDED

335,320 kg.



DATE OF COMMISSIONING

23/09/2020



ANKARA

OLİMPİYAT ISI SPP

404 kWp

OLİMPİYAT
ISI VE MAKİNA SANAYİ



PROJECT'S INSTALLED CAPACITY

AC: 350 kW_e DC: 404 kW_p



ANNUAL ENERGY PRODUCTION

473,632 kWh



TOTAL NUMBER OF HOUSEHOLD CONSUMPTION UNITS EQUAL TO THE CAPACITY

156 Households



NUMBER OF PANELS USED

1,050 Panels



AMOUNT OF GREENHOUSE GAS EMISSIONS AVOIDED

222,607 kg.



DATE OF COMMISSIONING

24/07/2020



BURSA

İBRAŞ KAUÇUK SPP 625 kWp



PROJECT'S INSTALLED CAPACITY
AC: 550 kW_e DC: 625 kW_p



ANNUAL ENERGY PRODUCTION
781,945 kWh



**TOTAL NUMBER OF HOUSEHOLD
CONSUMPTION UNITS EQUAL TO
THE CAPACITY**
256 HOUSEHOLD



NUMBER OF PANELS USED
1,374 Panel



**AMOUNT OF GREENHOUSE GAS
EMISSIONS AVOIDED**
367,392 kg.



DATE OF COMMISSIONING
03/05/2024



KONYA

ŞEVKET ÖZLÜ TARIM SPP 295 kWp



PROJECT'S INSTALLED CAPACITY
AC: 240 kW_e DC: 295 kW_p



ANNUAL ENERGY PRODUCTION
517,221 kWh



**TOTAL NUMBER OF HOUSEHOLD
CONSUMPTION UNITS EQUAL TO
THE CAPACITY**
170 Households



NUMBER OF PANELS USED
738 Panels



**AMOUNT OF GREENHOUSE GAS
EMISSIONS AVOIDED**
243,089 kg.



DATE OF COMMISSIONING
04/03/2021



ADANA

VERİ MERKEZİ SPP

250 kWp



PROJECT'S INSTALLED CAPACITY

AC: 220,80 kWe DC: 250 kWp



ANNUAL ENERGY PRODUCTION

381,184 kWh



TOTAL NUMBER OF HOUSEHOLD CONSUMPTION UNITS EQUAL TO THE CAPACITY

110 Households



NUMBER OF PANELS USED

780 Panels



AMOUNT OF GREENHOUSE GAS EMISSIONS AVOIDED

228,710 kg.



DATE OF COMMISSIONING

23/08/2019



ADANA

ATLAS FİDE SPP

205 kWp



PROJECT'S INSTALLED CAPACITY

AC: 165,60 kWe DC: 205 kWp



ANNUAL ENERGY PRODUCTION

265,820 kWh



TOTAL NUMBER OF HOUSEHOLD CONSUMPTION UNITS EQUAL TO THE CAPACITY

88 Households



NUMBER OF PANELS USED

640 Panels



AMOUNT OF GREENHOUSE GAS EMISSIONS AVOIDED

159,492 kg.



DATE OF COMMISSIONING

25/09/2020



KOCAELİ

COLGATE PALMOLIVE SPP

101 kWp



PROJECT'S INSTALLED CAPACITY

AC: 82,80 kWe DC: 101 kWp



ANNUAL ENERGY PRODUCTION

111,197 kWh



TOTAL NUMBER OF HOUSEHOLD CONSUMPTION UNITS EQUAL TO THE CAPACITY

37 Households



NUMBER OF PANELS USED

252 Panels



AMOUNT OF GREENHOUSE GAS EMISSIONS AVOIDED

66,718 kg.



DATE OF COMMISSIONING

12/01/2021



KONYA

KAMER KOLEJİ SPP

77 kWp



PROJECT'S INSTALLED CAPACITY

AC: 63 kWe DC: 77 kWp



ANNUAL ENERGY PRODUCTION

113,987 kWh



TOTAL NUMBER OF HOUSEHOLD CONSUMPTION UNITS EQUAL TO THE CAPACITY

38 Households



NUMBER OF PANELS USED

180 Panels



AMOUNT OF GREENHOUSE GAS EMISSIONS AVOIDED

53,549 kg.



DATE OF COMMISSIONING

05/01/2022



ADANA

GÖKBORA LOJİSTİK SPP

72 kWp



PROJECT'S INSTALLED CAPACITY

AC: 60 kWe DC: 72 kWp



ANNUAL ENERGY PRODUCTION

88,250 kWh



TOTAL NUMBER OF HOUSEHOLD CONSUMPTION UNITS EQUAL TO THE CAPACITY

29 Households



NUMBER OF PANELS USED

180 Panels



AMOUNT OF GREENHOUSE GAS EMISSIONS AVOIDED

41,477 kg.



DATE OF COMMISSIONING

12/08/2021



ADANA

TEKFEN İNŞAAT SPP

47 kWp



PROJECT'S INSTALLED CAPACITY

AC: 42.60 kWe DC: 47 kWp



ANNUAL ENERGY PRODUCTION

75,941 kWh



TOTAL NUMBER OF HOUSEHOLD CONSUMPTION UNITS EQUAL TO THE CAPACITY

25 Households



NUMBER OF PANELS USED

147 Panels



AMOUNT OF GREENHOUSE GAS EMISSIONS AVOIDED

45,565 kg.



DATE OF COMMISSIONING

03/07/2020



İSTANBUL

EKSİM YATIRIM HOLDİNG SPP

41 kWp

EKSİM
YATIRIM HOLDİNG



PROJECT'S INSTALLED CAPACITY
AC: 47.60 kWe DC: 41 kWp



ANNUAL ENERGY PRODUCTION
49,437 kWh



TOTAL NUMBER OF HOUSEHOLD CONSUMPTION UNITS EQUAL TO THE CAPACITY
16 Households



NUMBER OF PANELS USED
98 Panels



AMOUNT OF GREENHOUSE GAS EMISSIONS AVOIDED
23,235 kg.



DATE OF COMMISSIONING
25/02/2021



MANİSA

ÇELSAN ZİRAAT 2 SPP

816 kWp



PROJECT'S INSTALLED CAPACITY
AC: 770 kWe DC: 816.27 kWp



ANNUAL ENERGY PRODUCTION
1,062,500 kWh



TOTAL NUMBER OF HOUSEHOLD CONSUMPTION UNITS EQUAL TO THE CAPACITY
350 Households



NUMBER OF PANELS USED
1,794 Panel



AMOUNT OF GREENHOUSE GAS EMISSIONS AVOIDED
499,400 kg.



DATE OF COMMISSIONING
31/12/2024



KÜTAHYA

NG KÜTAHYA SERAMİK SPP

3,987 kWp

NG | KÜTAHYA
SERAMİK



PROJECT'S INSTALLED CAPACITY
AC: 3,066 kWe DC: 3,987 kWp



ANNUAL ENERGY PRODUCTION
5,436,700 kWh



TOTAL NUMBER OF HOUSEHOLD CONSUMPTION UNITS EQUAL TO THE CAPACITY
1,791 Households



NUMBER OF PANELS USED
9,372 Panels



AMOUNT OF GREENHOUSE GAS EMISSIONS AVOIDED
2,555,249 kg.



DATE OF COMMISSIONING
27/06/2022



TEKİRDAĞ

AKEL SUNİ DERİ 1 SPP

1,216 kWp



PROJECT'S INSTALLED CAPACITY
AC: 900,00 kWe DC: 1,216 kWp



ANNUAL ENERGY PRODUCTION
1,230,215 kWh



TOTAL NUMBER OF HOUSEHOLD CONSUMPTION UNITS EQUAL TO THE CAPACITY
405 Households



NUMBER OF PANELS USED
2702 Panels



AMOUNT OF GREENHOUSE GAS EMISSIONS AVOIDED
577,932 kg.



DATE OF COMMISSIONING
30/08/2022



UŞAK

ÖZEĞE TEKSTİL SPP

2,476 kWp



PROJECT'S INSTALLED CAPACITY
AC: 2,400 kWe DC: 2,476 kWp



ANNUAL ENERGY PRODUCTION
3,341,934 kWh



TOTAL NUMBER OF HOUSEHOLD CONSUMPTION UNITS EQUAL TO THE CAPACITY
1,101 Households



NUMBER OF PANELS USED
5,502 Panels



AMOUNT OF GREENHOUSE GAS EMISSIONS AVOIDED
1,569,996 kg.



DATE OF COMMISSIONING
31/05/2022



KÜTAHYA

BOLİŞ PLASTİK SPP

970 kWp



PROJECT'S INSTALLED CAPACITY
AC: 800 kWe DC: 970 kWp



ANNUAL ENERGY PRODUCTION
1,269,900 kWh



TOTAL NUMBER OF HOUSEHOLD CONSUMPTION UNITS EQUAL TO THE CAPACITY
418 Households



NUMBER OF PANELS USED
2,282 Panels



AMOUNT OF GREENHOUSE GAS EMISSIONS AVOIDED
596,853 kg.



DATE OF COMMISSIONING
29/04/2022



ANKARA

ASSAN GROUP SPP

3,160 kWp

ASSAN
GROUP



PROJECT'S INSTALLED CAPACITY

AC: 2,400 kWe DC: 3,160 kWp



ANNUAL ENERGY PRODUCTION

4,321,000 kWh



TOTAL NUMBER OF HOUSEHOLD CONSUMPTION UNITS EQUAL TO THE CAPACITY

1,423 Households



NUMBER OF PANELS USED

6,946 Panels



AMOUNT OF GREENHOUSE GAS EMISSIONS AVOIDED

2,113,287 kg.



DATE OF COMMISSIONING

14/11/2022



AYDIN

ABALIOĞLU BALIK SPP

671 kWp

ABALIOĞLU



PROJECT'S INSTALLED CAPACITY

AC: 560 kWe DC: 671 kWp



ANNUAL ENERGY PRODUCTION

985,000 kWh



TOTAL NUMBER OF HOUSEHOLD CONSUMPTION UNITS EQUAL TO THE CAPACITY

324 Households



NUMBER OF PANELS USED

1,508 Panels



AMOUNT OF GREENHOUSE GAS EMISSIONS AVOIDED

462,950 kg.



DATE OF COMMISSIONING

30/08/2022



MUĞLA

GÜLLÜK SPP

1,851 kWp



PROJECT'S INSTALLED CAPACITY
AC: 1,435,20 kWe 1,851 kWp



ANNUAL ENERGY PRODUCTION
2,763,300 kWh



TOTAL NUMBER OF HOUSEHOLD CONSUMPTION UNITS EQUAL TO THE CAPACITY
910 Households



NUMBER OF PANELS USED
4,160 Panels



AMOUNT OF GREENHOUSE GAS EMISSIONS AVOIDED
1,298,151 kg.



DATE OF COMMISSIONING
25/03/2022



TEKİRDAĞ

AKEL SUNİ DERİ 2 SPP

1,148 kWp



PROJECT'S INSTALLED CAPACITY
AC: 960 kWe DC: 1,148 kWp



ANNUAL ENERGY PRODUCTION
1,450,823 kWh



TOTAL NUMBER OF HOUSEHOLD CONSUMPTION UNITS EQUAL TO THE CAPACITY
478 Households



NUMBER OF PANELS USED
2,550 Panels



AMOUNT OF GREENHOUSE GAS EMISSIONS AVOIDED
681,594 kg.



DATE OF COMMISSIONING
30/08/2022



KOCAELİ

MPS METAL SPP

1,253 kWp



Metal Plastik Sanayi



PROJECT'S INSTALLED CAPACITY

AC: 1,000 kWe DC: 1,253 kWp



ANNUAL ENERGY PRODUCTION

1,324,031 kWh



TOTAL NUMBER OF HOUSEHOLD CONSUMPTION UNITS EQUAL TO THE CAPACITY

436 Households



NUMBER OF PANELS USED

2,784 Panels



AMOUNT OF GREENHOUSE GAS EMISSIONS AVOIDED

622,189 kg.



DATE OF COMMISSIONING

30/08/2022



TEKİRDAĞ

AKSA JENERATÖR SPP

867 kWp



PROJECT'S INSTALLED CAPACITY

AC: 700 kWe DC: 867 kWp



ANNUAL ENERGY PRODUCTION

933,200 kWh



TOTAL NUMBER OF HOUSEHOLD CONSUMPTION UNITS EQUAL TO THE CAPACITY

307 Households



NUMBER OF PANELS USED

2,088 Panels



AMOUNT OF GREENHOUSE GAS EMISSIONS AVOIDED

466,603 kg.



DATE OF COMMISSIONING

30/08/2022



ADANA

ÇOKYAŞAR TEL SPP

1,557 kWp

COKYASAR
TEL A.Ş



PROJECT'S INSTALLED CAPACITY

AC: 1,100 kWe DC: 1,557 kWp



ANNUAL ENERGY PRODUCTION

1,764,378 kWh



TOTAL NUMBER OF HOUSEHOLD CONSUMPTION UNITS EQUAL TO THE CAPACITY

581 Households



NUMBER OF PANELS USED

3,460 Panels



AMOUNT OF GREENHOUSE GAS EMISSIONS AVOIDED

829,145 kg.



DATE OF COMMISSIONING

30/08/2022



MALATYA

MİRAM OTOMOTİV SPP

470 kWp

Miram



PROJECT'S INSTALLED CAPACITY

AC: 400 kWe DC: 470 kWp



ANNUAL ENERGY PRODUCTION

736,639 kWh



TOTAL NUMBER OF HOUSEHOLD CONSUMPTION UNITS EQUAL TO THE CAPACITY

243 Households



NUMBER OF PANELS USED

1,021 Panels



AMOUNT OF GREENHOUSE GAS EMISSIONS AVOIDED

346,177 kg.



DATE OF COMMISSIONING

31/10/2022



GAZİANTEP

EKONET TEKSTİL SPP

4,550 kWp



PROJECT'S INSTALLED CAPACITY

AC: 3,500 kWe DC: 4,550 kWp



ANNUAL ENERGY PRODUCTION

6,952,899 kWh



TOTAL NUMBER OF HOUSEHOLD CONSUMPTION UNITS EQUAL TO THE CAPACITY

2,290 HOUSEHOLD



NUMBER OF PANELS USED

10,000 Panel



AMOUNT OF GREENHOUSE GAS EMISSIONS AVOIDED

3,267,005 kg.



DATE OF COMMISSIONING

25/01/2022



BURSA

ERŞAT TEKSTİL 1 SPP

878 kWp

ERŞAT
TEKSTİL



PROJECT'S INSTALLED CAPACITY

AC: 667 kWe DC: 878 kWp



ANNUAL ENERGY PRODUCTION

968,235 kWh



TOTAL NUMBER OF HOUSEHOLD CONSUMPTION UNITS EQUAL TO THE CAPACITY

319 HOUSEHOLD



NUMBER OF PANELS USED

1,930 Panel



AMOUNT OF GREENHOUSE GAS EMISSIONS AVOIDED

454,907 kg.



DATE OF COMMISSIONING

24/02/2023



ANKARA

AKMERMER SPP

1,005 kWp

 **Akmermer boru**
SİRAL KAYNAKLI ÇELİK BORU



PROJECT'S INSTALLED CAPACITY

AC: 720 kWe DC: 1,005 kWp



ANNUAL ENERGY PRODUCTION

1,199,600 kWh



TOTAL NUMBER OF HOUSEHOLD CONSUMPTION UNITS EQUAL TO THE CAPACITY

395 HOUSEHOLD



NUMBER OF PANELS USED

2,208 Panel



AMOUNT OF GREENHOUSE GAS EMISSIONS AVOIDED

563,729 kg.



DATE OF COMMISSIONING

14/11/2022



MERSİN

BERDAN CİVATA 5 SPP

571 kWp

 **BERDAN**
CİVATA & SOMUN



PROJECT'S INSTALLED CAPACITY

AC: 467 kWe DC: 571 kWp



ANNUAL ENERGY PRODUCTION

755,367 kWh



TOTAL NUMBER OF HOUSEHOLD CONSUMPTION UNITS EQUAL TO THE CAPACITY

249 HOUSEHOLD



NUMBER OF PANELS USED

1,254 Panel



AMOUNT OF GREENHOUSE GAS EMISSIONS AVOIDED

354,908 kg.



DATE OF COMMISSIONING

23/01/2023



ADANA

ÇEKMEZ PLASTİK SPP

551 kWp


ÇEKMEZ PLASTİK®



PROJECT'S INSTALLED CAPACITY
AC:400 kWe DC: 551 kWp



ANNUAL ENERGY PRODUCTION
704,080 kWh



TOTAL NUMBER OF HOUSEHOLD CONSUMPTION UNITS EQUAL TO THE CAPACITY
232 HOUSEHOLD



NUMBER OF PANELS USED
1,185 Panel



AMOUNT OF GREENHOUSE GAS EMISSIONS AVOIDED
330,874 kg.



DATE OF COMMISSIONING
02/01/2023



MERSİN

BERDAN CİVATA 6 SPP

358 kWp


BERDAN
CIVATA & SOMUN



PROJECT'S INSTALLED CAPACITY
AC: 267 kWe DC: 358 kWp



ANNUAL ENERGY PRODUCTION
474,101 kWh



TOTAL NUMBER OF HOUSEHOLD CONSUMPTION UNITS EQUAL TO THE CAPACITY
156 HOUSEHOLD



NUMBER OF PANELS USED
786 Panel



AMOUNT OF GREENHOUSE GAS EMISSIONS AVOIDED
222,762 kg.



DATE OF COMMISSIONING
23/01/2023



ŞANLIURFA

ÉYVAN TEKSTİL SPP

1,814 kWp



PROJECT'S INSTALLED CAPACITY
AC: 1,500 kWe DC: 1,814 kWp



ANNUAL ENERGY PRODUCTION
2,626,243 kWh



TOTAL NUMBER OF HOUSEHOLD CONSUMPTION UNITS EQUAL TO THE CAPACITY
865 HOUSEHOLD



NUMBER OF PANELS USED
3,986 Panel



AMOUNT OF GREENHOUSE GAS EMISSIONS AVOIDED
1,234,182 kg.



DATE OF COMMISSIONING
15/02/2022



BURSA

ERŞAT TEKSTİL 2 SPP

1,776 kWp



PROJECT'S INSTALLED CAPACITY
AC: 1,367 kWe DC: 1,776 kWp



ANNUAL ENERGY PRODUCTION
1,980,118 kWh



TOTAL NUMBER OF HOUSEHOLD CONSUMPTION UNITS EQUAL TO THE CAPACITY
652 HOUSEHOLD



NUMBER OF PANELS USED
3,904 Panel



AMOUNT OF GREENHOUSE GAS EMISSIONS AVOIDED
930,320 kg.



DATE OF COMMISSIONING
20/02/2023



ERŞAT
TEKSTİL

KOCAELİ

BİZİM TOPTAN SPP

264 kWp



PROJECT'S INSTALLED CAPACITY

AC: 221 kWe DC: 264 kWp



ANNUAL ENERGY PRODUCTION

304,992 kWh



TOTAL NUMBER OF HOUSEHOLD CONSUMPTION UNITS EQUAL TO THE CAPACITY

100 HOUSEHOLD



NUMBER OF PANELS USED

640 Panel



AMOUNT OF GREENHOUSE GAS EMISSIONS AVOIDED

134,280 kg.



DATE OF COMMISSIONING

17/01/2022



İSTANBUL

DENİZPEN PLASTİK SPP

1,231 kWp



PROJECT'S INSTALLED CAPACITY

AC: 1,000 kWe DC: 1,231 kWp



ANNUAL ENERGY PRODUCTION

1,502,280 kWh



TOTAL NUMBER OF HOUSEHOLD CONSUMPTION UNITS EQUAL TO THE CAPACITY

495 HOUSEHOLD



NUMBER OF PANELS USED

2,706 Panel



AMOUNT OF GREENHOUSE GAS EMISSIONS AVOIDED

706,100 kg.



DATE OF COMMISSIONING

24/02/2023



UŞAK

AY TEKSTİL SPP

1,149 kWp



PROJECT'S INSTALLED CAPACITY
AC: 900 kWe DC: 1,149 kWp



ANNUAL ENERGY PRODUCTION
1,644,569 kWh



TOTAL NUMBER OF HOUSEHOLD CONSUMPTION UNITS EQUAL TO THE CAPACITY
542 HOUSEHOLD



NUMBER OF PANELS USED
2,526 Panel



AMOUNT OF GREENHOUSE GAS EMISSIONS AVOIDED
772,726 kg.



DATE OF COMMISSIONING
21/02/2023



HATAY

TARIK AMBALAJ SPP

497 kWp



PROJECT'S INSTALLED CAPACITY
AC: 400 kWe DC: 497 kWp



ANNUAL ENERGY PRODUCTION
710,488 kWh



TOTAL NUMBER OF HOUSEHOLD CONSUMPTION UNITS EQUAL TO THE CAPACITY
234 HOUSEHOLD



NUMBER OF PANELS USED
1,092 Panel



AMOUNT OF GREENHOUSE GAS EMISSIONS AVOIDED
333,831 kg.



DATE OF COMMISSIONING
16/01/2022



İZMİR

EGE POYRAZ CAM SPP

320 kWp

EgePoyrazCam



PROJECT'S INSTALLED CAPACITY

AC: 260 kWe DC: 320 kWp



ANNUAL ENERGY PRODUCTION

455,183 kWh



TOTAL NUMBER OF HOUSEHOLD CONSUMPTION UNITS EQUAL TO THE CAPACITY

150 HOUSEHOLD



NUMBER OF PANELS USED

704 Panel



AMOUNT OF GREENHOUSE GAS EMISSIONS AVOIDED

213,910 kg.



DATE OF COMMISSIONING

25/10/2022



UŞAK

BEPA 2 SPP

925 kWp



PROJECT'S INSTALLED CAPACITY

AC: 780 kWe DC: 925 kWp



ANNUAL ENERGY PRODUCTION

1,260,889 kWh



TOTAL NUMBER OF HOUSEHOLD CONSUMPTION UNITS EQUAL TO THE CAPACITY

415 HOUSEHOLD



NUMBER OF PANELS USED

2,152 Panel



AMOUNT OF GREENHOUSE GAS EMISSIONS AVOIDED

592,533 kg.



DATE OF COMMISSIONING

25/10/2022



KAYSERİ

ERCIYES FORM SÜNGER SPP

2,300 kWp

FORM
SÜNGER



PROJECT'S INSTALLED CAPACITY

AC: 1,500 kWe DC: 2,300 kWp



ANNUAL ENERGY PRODUCTION

3,210,200 kWh



TOTAL NUMBER OF HOUSEHOLD CONSUMPTION UNITS EQUAL TO THE CAPACITY

1,057 HOUSEHOLD



NUMBER OF PANELS USED

5,056 Panel



AMOUNT OF GREENHOUSE GAS EMISSIONS AVOIDED

1,508,800 kg.



DATE OF COMMISSIONING

27/01/2022



UŞAK

KUYUCAK BATTANIYE SPP

1,190 kWp

KUYUCAK



PROJECT'S INSTALLED CAPACITY

AC: 1,100 kWe DC: 1,190 kWp



ANNUAL ENERGY PRODUCTION

1,637,443 kWh



TOTAL NUMBER OF HOUSEHOLD CONSUMPTION UNITS EQUAL TO THE CAPACITY

539 HOUSEHOLD



NUMBER OF PANELS USED

2,616 Panel



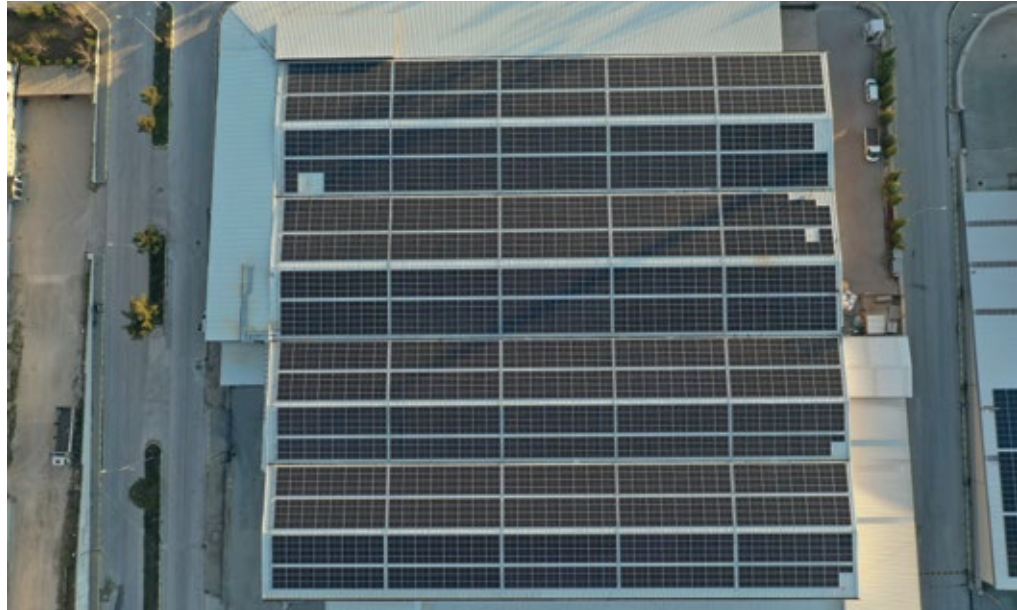
AMOUNT OF GREENHOUSE GAS EMISSIONS AVOIDED

769,478 kg.



DATE OF COMMISSIONING

24/02/2023



KAYSERİ

ERCIYES İSTİKBAL SPP

4,901 kWp

 **istikbal**



PROJECT'S INSTALLED CAPACITY

AC: 4,200 kWe DC: 4,901 kWp



ANNUAL ENERGY PRODUCTION

6,641,100 kWh



TOTAL NUMBER OF HOUSEHOLD CONSUMPTION UNITS EQUAL TO THE CAPACITY

2,187 HOUSEHOLD



NUMBER OF PANELS USED

8,992 Panel



AMOUNT OF GREENHOUSE GAS EMISSIONS AVOIDED

3,121,300 kg.



DATE OF COMMISSIONING

24/02/2023



ANKARA

OSMANLI REKLAM SPP

1,105 kWp

 **OSMANLI**
REKLAM



PROJECT'S INSTALLED CAPACITY

AC: 990 kWe DC: 1,105 kWp



ANNUAL ENERGY PRODUCTION

1,517,169 kWh



TOTAL NUMBER OF HOUSEHOLD CONSUMPTION UNITS EQUAL TO THE CAPACITY

500 HOUSEHOLD



NUMBER OF PANELS USED

2,570 Panel



AMOUNT OF GREENHOUSE GAS EMISSIONS AVOIDED

712,973 kg.



DATE OF COMMISSIONING

13/12/2022



KAYSERİ

ERCIYES ELDA HALI SPP

4,473 kWp



PROJECT'S INSTALLED CAPACITY

AC: 3,000 kWe DC: 4,473 kWp



ANNUAL ENERGY PRODUCTION

5,974,800 kWh



TOTAL NUMBER OF HOUSEHOLD CONSUMPTION UNITS EQUAL TO THE CAPACITY

1,968 HOUSEHOLD



NUMBER OF PANELS USED

9,831 Panel



AMOUNT OF GREENHOUSE GAS EMISSIONS AVOIDED

2,808,200 kg.



DATE OF COMMISSIONING

30/12/2022



OSMANIYE

BONİP TEKSTİL SPP

1,944 kWp



PROJECT'S INSTALLED CAPACITY

AC: 1,600 kWe DC: 1,944 kWp



ANNUAL ENERGY PRODUCTION

2,253,056 kWh



TOTAL NUMBER OF HOUSEHOLD CONSUMPTION UNITS EQUAL TO THE CAPACITY

742 HOUSEHOLD



NUMBER OF PANELS USED

3,888 Panel



AMOUNT OF GREENHOUSE GAS EMISSIONS AVOIDED

1,058,771 kg.



DATE OF COMMISSIONING

09/01/2023



KAYSERİ

ERCIYES HES KABLO SPP

3,281 kWp



PROJECT'S INSTALLED CAPACITY

AC: 2,500 kWe DC: 3,281 kWp



ANNUAL ENERGY PRODUCTION

4,286,000 kWh



TOTAL NUMBER OF HOUSEHOLD CONSUMPTION UNITS EQUAL TO THE CAPACITY

1,412 HOUSEHOLD



NUMBER OF PANELS USED

7,210 Panel



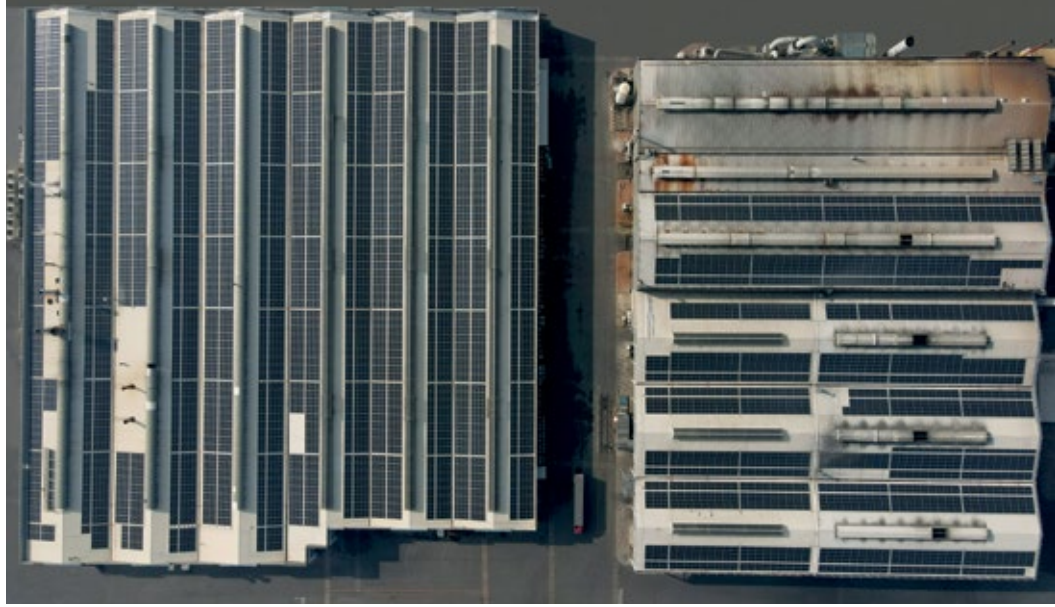
AMOUNT OF GREENHOUSE GAS EMISSIONS AVOIDED

2,014,420 kg.



DATE OF COMMISSIONING

24/02/2023



DÜZCE

ÇOKYAŞAR HALAT SPP

1,253 kWp



PROJECT'S INSTALLED CAPACITY

AC: 990 kWe DC: 1,253 kWp



ANNUAL ENERGY PRODUCTION

1,500,170 kWh



TOTAL NUMBER OF HOUSEHOLD CONSUMPTION UNITS EQUAL TO THE CAPACITY

494 HOUSEHOLD



NUMBER OF PANELS USED

2,754 Panel



AMOUNT OF GREENHOUSE GAS EMISSIONS AVOIDED

704,986 kg.



DATE OF COMMISSIONING

24/02/2023



MALATYA

BİR DAMLA SPP

301 kWp



PROJECT'S INSTALLED CAPACITY
AC: 240 kWe DC: 301 kWp



ANNUAL ENERGY PRODUCTION
587,110 kWh



TOTAL NUMBER OF HOUSEHOLD CONSUMPTION UNITS EQUAL TO THE CAPACITY
193 HOUSEHOLD



NUMBER OF PANELS USED
714 Panel



AMOUNT OF GREENHOUSE GAS EMISSIONS AVOIDED
275,900 kg.



DATE OF COMMISSIONING
30/12/2022



ANTALYA

TOPUZ İMALAT SPP

285 kWp



PROJECT'S INSTALLED CAPACITY
AC: 270 kWe DC: 285 kWp



ANNUAL ENERGY PRODUCTION
381,234 kWh



TOTAL NUMBER OF HOUSEHOLD CONSUMPTION UNITS EQUAL TO THE CAPACITY
126 HOUSEHOLD



NUMBER OF PANELS USED
612 Panel



AMOUNT OF GREENHOUSE GAS EMISSIONS AVOIDED
179,148 kg.



DATE OF COMMISSIONING
24/02/2023



UŞAK

PAK PAMUK SPP

608 kWp



PROJECT'S INSTALLED CAPACITY
AC: 500 kWe DC: 608 kWp



ANNUAL ENERGY PRODUCTION
813,215 kWh



TOTAL NUMBER OF HOUSEHOLD CONSUMPTION UNITS EQUAL TO THE CAPACITY
268 HOUSEHOLD



NUMBER OF PANELS USED
1,350 Panel



AMOUNT OF GREENHOUSE GAS EMISSIONS AVOIDED
382,211 kg.



DATE OF COMMISSIONING
29/11/2022



İZMİR

VE-GE KAĞIT SPP

2,547 kWp



PROJECT'S INSTALLED CAPACITY
AC: 1,998 kWe DC: 2,547 kWp



ANNUAL ENERGY PRODUCTION
3,605,850 kWh



TOTAL NUMBER OF HOUSEHOLD CONSUMPTION UNITS EQUAL TO THE CAPACITY
1,188 HOUSEHOLD



NUMBER OF PANELS USED
5,598 Panel



AMOUNT OF GREENHOUSE GAS EMISSIONS AVOIDED
1,694,700 kg.



DATE OF COMMISSIONING
01/06/2023



GAZİANTEP

ÇABUK AMBALAJ SPP

2,431 kWp



PROJECT'S INSTALLED CAPACITY
AC: 2,000 kWe DC: 2,431 kWp



ANNUAL ENERGY PRODUCTION
3,675,120 kWh



TOTAL NUMBER OF HOUSEHOLD CONSUMPTION UNITS EQUAL TO THE CAPACITY
1,211 HOUSEHOLD



NUMBER OF PANELS USED
4,466 Panel



AMOUNT OF GREENHOUSE GAS EMISSIONS AVOIDED
1,726,815 kg.



DATE OF COMMISSIONING
23/06/2023



KAYSERİ

ERCIYES BELLONA 6 SPP

3,880 kWp

BELLONA



PROJECT'S INSTALLED CAPACITY
AC: 2,400 kWe DC: 3,880 kWp



ANNUAL ENERGY PRODUCTION
5,071,100 kWh



TOTAL NUMBER OF HOUSEHOLD CONSUMPTION UNITS EQUAL TO THE CAPACITY
1,670 HOUSEHOLD



NUMBER OF PANELS USED
7,120 Panel



AMOUNT OF GREENHOUSE GAS EMISSIONS AVOIDED
2,383,400 kg.



DATE OF COMMISSIONING
01/06/2023



İSTANBUL

SERTPLAS SPP

1,298 kWp

SERTPLAS®



PROJECT'S INSTALLED CAPACITY
AC: 990 kWe DC: 1,298 kWp



ANNUAL ENERGY PRODUCTION
1,571,550 kWh



TOTAL NUMBER OF HOUSEHOLD CONSUMPTION UNITS EQUAL TO THE CAPACITY
518 HOUSEHOLD



NUMBER OF PANELS USED
2,853 Panel



AMOUNT OF GREENHOUSE GAS EMISSIONS AVOIDED
738,600 kg.



DATE OF COMMISSIONING
07/06/2023



MALATYA

İNTEM TRIKO SPP

3,882 kWp

İntem



PROJECT'S INSTALLED CAPACITY
AC: 3,000 kWe DC: 3,882 kWp



ANNUAL ENERGY PRODUCTION
5,580,920 kWh



TOTAL NUMBER OF HOUSEHOLD CONSUMPTION UNITS EQUAL TO THE CAPACITY
1,838 HOUSEHOLD



NUMBER OF PANELS USED
8,532 Panel



AMOUNT OF GREENHOUSE GAS EMISSIONS AVOIDED
2,622,729 kg.



DATE OF COMMISSIONING
27/05/2023



KAYSERİ

ERCİYES BELLONA PAZARLAMA SPP

388 kWp

BELLONA



PROJECT'S INSTALLED CAPACITY

AC: 240 kW DC: 388 kWp



ANNUAL ENERGY PRODUCTION

499,854 kWh



TOTAL NUMBER OF HOUSEHOLD CONSUMPTION UNITS EQUAL TO THE CAPACITY

165 HOUSEHOLD



NUMBER OF PANELS USED

720 Panel



AMOUNT OF GREENHOUSE GAS EMISSIONS AVOIDED

234,900 kg.



DATE OF COMMISSIONING

01/06/2023



UŞAK

KYÇ 1 TEKSTİL SPP

1,100 kWp

KUYUCAK
Recycled Yarns



PROJECT'S INSTALLED CAPACITY

AC: 867 kW DC: 1,100 kWp



ANNUAL ENERGY PRODUCTION

1,340,012 kWh



TOTAL NUMBER OF HOUSEHOLD CONSUMPTION UNITS EQUAL TO THE CAPACITY

441 HOUSEHOLD



NUMBER OF PANELS USED

2,418 Panel



AMOUNT OF GREENHOUSE GAS EMISSIONS AVOIDED

629,725 kg.



DATE OF COMMISSIONING

01/06/2023



ADANA

ADAWALL 2 SPP

407 kWp


AdaWall



PROJECT'S INSTALLED CAPACITY
AC: 330 kWe DC: 407 kWp



ANNUAL ENERGY PRODUCTION
558,793 kWh



TOTAL NUMBER OF HOUSEHOLD CONSUMPTION UNITS EQUAL TO THE CAPACITY
184 HOUSEHOLD



NUMBER OF PANELS USED
895 Panel



AMOUNT OF GREENHOUSE GAS EMISSIONS AVOIDED
262,601 kg.



DATE OF COMMISSIONING
01/06/2023



TRABZON

GÜNDOĞDU MOBİLYA SPP

1,889 kWp





PROJECT'S INSTALLED CAPACITY
AC: 1,500 kWe DC: 1,889 kWp



ANNUAL ENERGY PRODUCTION
2,383,024 kWh



TOTAL NUMBER OF HOUSEHOLD CONSUMPTION UNITS EQUAL TO THE CAPACITY
785 HOUSEHOLD



NUMBER OF PANELS USED
4,152 Panel



AMOUNT OF GREENHOUSE GAS EMISSIONS AVOIDED
1,119,652 kg.



DATE OF COMMISSIONING
01/06/2023



AKSARAY

MERCEDES BENZ 2 SPP

1,273 kWp



Mercedes-Benz



PROJECT'S INSTALLED CAPACITY

AC: 1,000 kWe DC: 1,273 kWp



ANNUAL ENERGY PRODUCTION

1,929,770 kWh



TOTAL NUMBER OF HOUSEHOLD CONSUMPTION UNITS EQUAL TO THE CAPACITY

636 HOUSEHOLD



NUMBER OF PANELS USED

2,798 Panel



AMOUNT OF GREENHOUSE GAS EMISSIONS AVOIDED

907,000 kg.



DATE OF COMMISSIONING

01/06/2023



ADANA

EPAŞ DÖKÜM SPP

1,249 kWp



PROJECT'S INSTALLED CAPACITY

AC: 1,000 kWe DC: 1,249 kWp



ANNUAL ENERGY PRODUCTION

1,727,280 kWh



TOTAL NUMBER OF HOUSEHOLD CONSUMPTION UNITS EQUAL TO THE CAPACITY

569 HOUSEHOLD



NUMBER OF PANELS USED

2,746 Panel



AMOUNT OF GREENHOUSE GAS EMISSIONS AVOIDED

811,577 kg.



DATE OF COMMISSIONING

22/05/2023



BATMAN

MSA PLASTİK (AVCU BORU) SPP

860 kWp

 AVCUBORU



PROJECT'S INSTALLED CAPACITY

AC: 800 kWe DC: 860 kWp



ANNUAL ENERGY PRODUCTION

1,321,420 kWh



TOTAL NUMBER OF HOUSEHOLD CONSUMPTION UNITS EQUAL TO THE CAPACITY

435 HOUSEHOLD



NUMBER OF PANELS USED

1,890 Panel



AMOUNT OF GREENHOUSE GAS EMISSIONS AVOIDED

620,984 kg.



DATE OF COMMISSIONING

29/05/2023



KÜTAHYA

ALPİNO MOBİLYA SPP

2,097 kWp

 alpino[®]
MOBİLYA



PROJECT'S INSTALLED CAPACITY

AC: 1,600 kWe DC: 2,097 kWp



ANNUAL ENERGY PRODUCTION

2,913,612 kWh



TOTAL NUMBER OF HOUSEHOLD CONSUMPTION UNITS EQUAL TO THE CAPACITY

960 HOUSEHOLD



NUMBER OF PANELS USED

4,608 Panel



AMOUNT OF GREENHOUSE GAS EMISSIONS AVOIDED

1,369,229 kg.



DATE OF COMMISSIONING

01/06/2023



KÜTAHYA

DOĞUKAN GİPE İPLİK SPP

501 kWp



PROJECT'S INSTALLED CAPACITY
AC: 400 kWe DC: 501 kWp



ANNUAL ENERGY PRODUCTION
722,890 kWh



TOTAL NUMBER OF HOUSEHOLD CONSUMPTION UNITS EQUAL TO THE CAPACITY
238 HOUSEHOLD



NUMBER OF PANELS USED
1,102 Panel



AMOUNT OF GREENHOUSE GAS EMISSIONS AVOIDED
339,800 kg.



DATE OF COMMISSIONING
01/06/2023



ZONGULDAK

ÇANAĞÇILAR CREAVİT ECO SPP

432 kWp



PROJECT'S INSTALLED CAPACITY
AC: 315 kWe DC: 432 kWp



ANNUAL ENERGY PRODUCTION
487,800 kWh



TOTAL NUMBER OF HOUSEHOLD CONSUMPTION UNITS EQUAL TO THE CAPACITY
161 HOUSEHOLD



NUMBER OF PANELS USED
864 Panel



AMOUNT OF GREENHOUSE GAS EMISSIONS AVOIDED
229,300 kg.



DATE OF COMMISSIONING
01/06/2023



creavit

ZONGULDAK

ÇANAĞÇILAR DOXA SPP

1,360 kWp

doxa



PROJECT'S INSTALLED CAPACITY
AC: 1,000 kWe DC: 1,360 kWp



ANNUAL ENERGY PRODUCTION
1,542,000 kWh



TOTAL NUMBER OF HOUSEHOLD CONSUMPTION UNITS EQUAL TO THE CAPACITY
508 HOUSEHOLD



NUMBER OF PANELS USED
2,720 Panel



AMOUNT OF GREENHOUSE GAS EMISSIONS AVOIDED
724,600 kg.



DATE OF COMMISSIONING
01/06/2023



BİLECİK

HEPŞEN METAL SPP

1,515 kWp



PROJECT'S INSTALLED CAPACITY
AC: 1200 kWe DC: 1,515 kWp



ANNUAL ENERGY PRODUCTION
1,941,990 kWh



TOTAL NUMBER OF HOUSEHOLD CONSUMPTION UNITS EQUAL TO THE CAPACITY
640 HOUSEHOLD



NUMBER OF PANELS USED
3,330 Panel



AMOUNT OF GREENHOUSE GAS EMISSIONS AVOIDED
912,700 kg.



DATE OF COMMISSIONING
10/07/2024



KÜTAHYA

BARON ÇORAP SPP

501 kWp



PROJECT'S INSTALLED CAPACITY
AC: 400 kWe DC: 501 kWp



ANNUAL ENERGY PRODUCTION
722,890 kWh



TOTAL NUMBER OF HOUSEHOLD CONSUMPTION UNITS EQUAL TO THE CAPACITY
238 HOUSEHOLD



NUMBER OF PANELS USED
1,102 Panel



AMOUNT OF GREENHOUSE GAS EMISSIONS AVOIDED
339,800 kg.



DATE OF COMMISSIONING
25/05/2023



İSTANBUL

SORA KOZMETİK 1 SPP

990 kWp



PROJECT'S INSTALLED CAPACITY
AC: 800 kWe DC: 990 kWp



ANNUAL ENERGY PRODUCTION
1,255,308 kWh



TOTAL NUMBER OF HOUSEHOLD CONSUMPTION UNITS EQUAL TO THE CAPACITY
413 HOUSEHOLD



NUMBER OF PANELS USED
1,800 Panel



AMOUNT OF GREENHOUSE GAS EMISSIONS AVOIDED
589,909 kg.



DATE OF COMMISSIONING
18/04/2024



BİLECİK

ECZACIBAŞI ARTEMA SPP

1,870 kWp



PROJECT'S INSTALLED CAPACITY

AC: 1,300 kWe DC: 1,870 kWp



ANNUAL ENERGY PRODUCTION

2,223,960 kWh



TOTAL NUMBER OF HOUSEHOLD CONSUMPTION UNITS EQUAL TO THE CAPACITY

733 HOUSEHOLD



NUMBER OF PANELS USED

3400 Panel



AMOUNT OF GREENHOUSE GAS EMISSIONS AVOIDED

1,045,300 kg.



DATE OF COMMISSIONING

09/05/2024



GAZİANTEP

HUZUR TEL SPP

390 kWp



PROJECT'S INSTALLED CAPACITY

AC: 330 kWe DC: 390 kWp



ANNUAL ENERGY PRODUCTION

624,131 kWh



TOTAL NUMBER OF HOUSEHOLD CONSUMPTION UNITS EQUAL TO THE CAPACITY

206 HOUSEHOLD



NUMBER OF PANELS USED

710 Panel



AMOUNT OF GREENHOUSE GAS EMISSIONS AVOIDED

293,310 kg.



DATE OF COMMISSIONING

25/09/2023



ZONGULDAK

ÇANAĞÇILAR SUSTAIN SPP

3,344 kWp



PROJECT'S INSTALLED CAPACITY
AC: 2,449 kWe DC: 3,344 kWp



ANNUAL ENERGY PRODUCTION
3,991,000 kWh



TOTAL NUMBER OF HOUSEHOLD CONSUMPTION UNITS EQUAL TO THE CAPACITY
1,315 HOUSEHOLD



NUMBER OF PANELS USED
6,688 Panel



AMOUNT OF GREENHOUSE GAS EMISSIONS AVOIDED
1,875,600 kg.



DATE OF COMMISSIONING
25/10/2024



MALATYA

YİĞİTLER OTOMOTİV SPP

402 kWp



PROJECT'S INSTALLED CAPACITY
AC: 330 kWe DC: 402 kWp



ANNUAL ENERGY PRODUCTION
620,591 kWh



TOTAL NUMBER OF HOUSEHOLD CONSUMPTION UNITS EQUAL TO THE CAPACITY
204 HOUSEHOLD



NUMBER OF PANELS USED
865 Panel



AMOUNT OF GREENHOUSE GAS EMISSIONS AVOIDED
291,815 kg.



DATE OF COMMISSIONING
14/06/2024



YOZGAT

GEDAŞ GENEL GIDA SPP

4,012 kWp



PROJECT'S INSTALLED CAPACITY

AC: 3,287 kWe DC: 4,012 kWp



ANNUAL ENERGY PRODUCTION

6,249,252 kWh



TOTAL NUMBER OF HOUSEHOLD CONSUMPTION UNITS EQUAL TO THE CAPACITY

2,058 HOUSEHOLD



NUMBER OF PANELS USED

8,818 Panel



AMOUNT OF GREENHOUSE GAS EMISSIONS AVOIDED

2,937,174 kg.



DATE OF COMMISSIONING

11/06/2024



BOLU

ALPPLAS SPP

816 kWp



PROJECT'S INSTALLED CAPACITY

AC: 600 kWe DC: 816 kWp



ANNUAL ENERGY PRODUCTION

1,017,190 kWh



TOTAL NUMBER OF HOUSEHOLD CONSUMPTION UNITS EQUAL TO THE CAPACITY

335 HOUSEHOLD



NUMBER OF PANELS USED

1,794 Panel



AMOUNT OF GREENHOUSE GAS EMISSIONS AVOIDED

478,100 kg.



DATE OF COMMISSIONING

21/08/2023



KOCAELİ

CPS PRESSFORM SPP

1,099 kWp



PROJECT'S INSTALLED CAPACITY

AC: 900 kW_e DC: 1,099 kW_p



ANNUAL ENERGY PRODUCTION

1,295,470 kWh



TOTAL NUMBER OF HOUSEHOLD CONSUMPTION UNITS EQUAL TO THE CAPACITY

427 HOUSEHOLD



NUMBER OF PANELS USED

2,416 Panel



AMOUNT OF GREENHOUSE GAS EMISSIONS AVOIDED

608,900 kg.



DATE OF COMMISSIONING

15/02/2024



İSTANBUL

SERİN CİVATA SPP

432 kWp



PROJECT'S INSTALLED CAPACITY

AC: 330 kW_e DC: 432 kW_p



ANNUAL ENERGY PRODUCTION

565,308 kWh



TOTAL NUMBER OF HOUSEHOLD CONSUMPTION UNITS EQUAL TO THE CAPACITY

186 HOUSEHOLD



NUMBER OF PANELS USED

950 Panel



AMOUNT OF GREENHOUSE GAS EMISSIONS AVOIDED

265,664 kg.



DATE OF COMMISSIONING

06/05/2024



ÇANKIRI

EREN ÇELİK SPP

2,850 kWp



PROJECT'S INSTALLED CAPACITY
AC: 2,100 kWe DC: 2,850 kWp



ANNUAL ENERGY PRODUCTION
3,683,930 kWh



TOTAL NUMBER OF HOUSEHOLD CONSUMPTION UNITS EQUAL TO THE CAPACITY
1,213 HOUSEHOLD



NUMBER OF PANELS USED
5,182 Panel



AMOUNT OF GREENHOUSE GAS EMISSIONS AVOIDED
1,731,400 kg.



DATE OF COMMISSIONING
29/07/2024



MANİSA

ÇELSAN ZİRAAT 1 SPP

1,424 kWp



PROJECT'S INSTALLED CAPACITY
AC: 1100 kWe DC: 1,424 kWp



ANNUAL ENERGY PRODUCTION
1,961,618 kWh



TOTAL NUMBER OF HOUSEHOLD CONSUMPTION UNITS EQUAL TO THE CAPACITY
646 HOUSEHOLD



NUMBER OF PANELS USED
3,129 Panel



AMOUNT OF GREENHOUSE GAS EMISSIONS AVOIDED
921,807 kg.



DATE OF COMMISSIONING
25/11/2024



UŞAK

AĞA PLASTİK SPP

681 kWp



PROJECT'S INSTALLED CAPACITY

AC: 550 kWe DC: 681 kWp



ANNUAL ENERGY PRODUCTION

981,413 kWh



TOTAL NUMBER OF HOUSEHOLD CONSUMPTION UNITS EQUAL TO THE CAPACITY

323 HOUSEHOLD



NUMBER OF PANELS USED

1,496 Panel



AMOUNT OF GREENHOUSE GAS EMISSIONS AVOIDED

461,264 kg.



DATE OF COMMISSIONING

13/12/2023



KAHRAMANMARAŞ

AKYILDIZ MUTFAK SPP

2,318 kWp



PROJECT'S INSTALLED CAPACITY

AC: 1,987,20 kWe DC: 2,318 kWp



ANNUAL ENERGY PRODUCTION

3,338,918 kWh



TOTAL NUMBER OF HOUSEHOLD CONSUMPTION UNITS EQUAL TO THE CAPACITY

1,100 Households



NUMBER OF PANELS USED

5,796 Panels



AMOUNT OF GREENHOUSE GAS EMISSIONS AVOIDED

1,569,291 kg.



DATE OF COMMISSIONING

15/02/2021





LAND-BASED PROJECTS





BITLİS

ADİLCEVAZ - ALAGES SPP

24,193 kWp



PROJECT'S INSTALLED CAPACITY
AC: 16,000 kWe DC: 24,193 kWp



NUMBER OF PANELS USED
58,296 Panels



ANNUAL ENERGY PRODUCTION
36,425,000 kWh



AMOUNT OF GREENHOUSE GAS EMISSIONS AVOIDED
21,855,000 kg.



TOTAL NUMBER OF HOUSEHOLD CONSUMPTION UNITS EQUAL TO THE CAPACITY
11,998 Households



DATE OF COMMISSIONING
31/12/2020

VAN

BAŞKALE SPP

13,701 kWp



PROJECT'S INSTALLED CAPACITY
AC: 11,682 kWe DC: 13,701 kWp



ANNUAL ENERGY PRODUCTION
22,599,000 kWh



TOTAL NUMBER OF HOUSEHOLD CONSUMPTION UNITS EQUAL TO THE CAPACITY
7,444 Households



NUMBER OF PANELS USED
42,156 Panels



AMOUNT OF GREENHOUSE GAS EMISSIONS AVOIDED
13,559,400 kg.



DATE OF COMMISSIONING
10/12/2019



DİYARBAKIR

KESENTAŞ SPP

12,415 kWp



PROJECT'S INSTALLED CAPACITY
AC: 10,690 kWe DC: 12,415 kWp



ANNUAL ENERGY PRODUCTION
17,713,000 kWh



TOTAL NUMBER OF HOUSEHOLD CONSUMPTION UNITS EQUAL TO THE CAPACITY
5,834 Households



NUMBER OF PANELS USED
43,560 Panels



AMOUNT OF GREENHOUSE GAS EMISSIONS AVOIDED
10,627,800 kg.



DATE OF COMMISSIONING
29/03/2019



ERZURUM

AŞKALE SPP

8,467 kWp



PROJECT'S INSTALLED CAPACITY

AC: 5,880 kWe DC: 8,467 kWp



ANNUAL ENERGY PRODUCTION

12,301,000 kWh



TOTAL NUMBER OF HOUSEHOLD CONSUMPTION UNITS EQUAL TO THE CAPACITY

4,052 Households



NUMBER OF PANELS USED

21,168 Panels



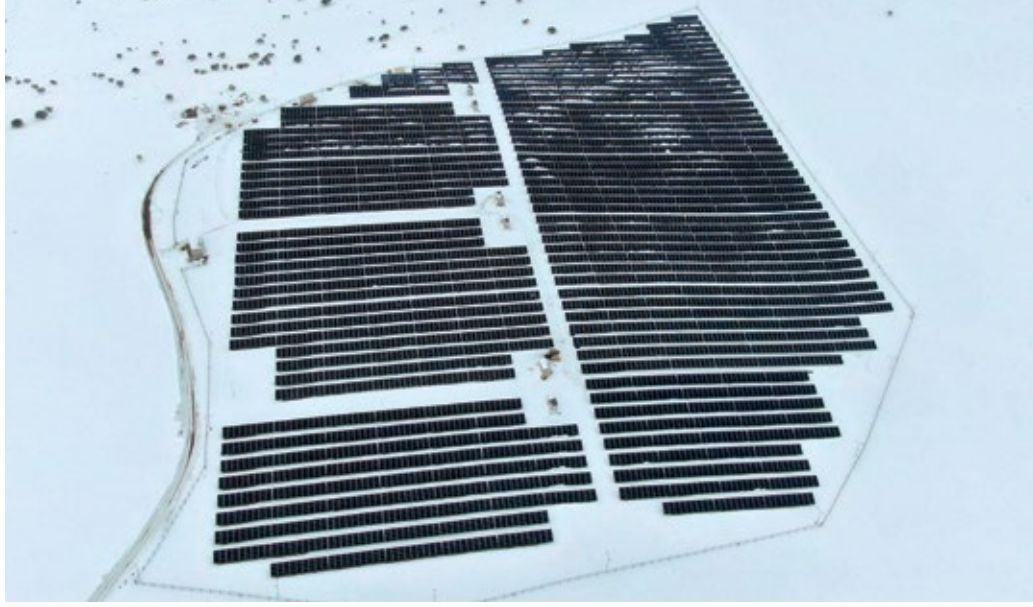
AMOUNT OF GREENHOUSE GAS EMISSIONS AVOIDED

7,380,600 kg.



DATE OF COMMISSIONING

31/01/2022



AĞRI

SUÇATAĞI SPP

7,020 kWp



PROJECT'S INSTALLED CAPACITY

AC: 5,940 kWe DC: 7,020 kWp



ANNUAL ENERGY PRODUCTION

10,728,000 kWh



TOTAL NUMBER OF HOUSEHOLD CONSUMPTION UNITS EQUAL TO THE CAPACITY

3,534 Households



NUMBER OF PANELS USED

21,600 Panels



AMOUNT OF GREENHOUSE GAS EMISSIONS AVOIDED

6,436,800 kg.



DATE OF COMMISSIONING

17/02/2020



YOZGAT

SARAYKÖY SPP

6,415 kWp



PROJECT'S INSTALLED CAPACITY
AC: 5,760 kWe DC: 6,415 kWp



ANNUAL ENERGY PRODUCTION
10,395,000 kWh



TOTAL NUMBER OF HOUSEHOLD CONSUMPTION UNITS EQUAL TO THE CAPACITY
3,424 Households



NUMBER OF PANELS USED
23,760 Panels



AMOUNT OF GREENHOUSE GAS EMISSIONS AVOIDED
6,237,000 kg.



DATE OF COMMISSIONING
30/03/2018



OSMANIYE

DÜZİÇİ SPP

5,799 kWp



PROJECT'S INSTALLED CAPACITY
AC: 4,938 kWe DC: 5,799 kWp



ANNUAL ENERGY PRODUCTION
9,219,000 kWh



TOTAL NUMBER OF HOUSEHOLD CONSUMPTION UNITS EQUAL TO THE CAPACITY
3,037 Households



NUMBER OF PANELS USED
15,465 Panels



AMOUNT OF GREENHOUSE GAS EMISSIONS AVOIDED
5,531,400 kg.



DATE OF COMMISSIONING
18/11/2019



OSMANIYE

YAVERIYE SPP

5,789 kWp



PROJECT'S INSTALLED CAPACITY
AC: 4,845 kWe DC: 5,789 kWp



ANNUAL ENERGY PRODUCTION
8,533,000 kWh



TOTAL NUMBER OF HOUSEHOLD CONSUMPTION UNITS EQUAL TO THE CAPACITY
2,811 Households



NUMBER OF PANELS USED
15,645 Panels



AMOUNT OF GREENHOUSE GAS EMISSIONS AVOIDED
5,119,920 kg.



DATE OF COMMISSIONING
18/11/2019



KONYA

KULU DOĞUTEPE SPP

4,722 kWp



PROJECT'S INSTALLED CAPACITY
AC: 4,450 kWe DC: 4,722 kWp



ANNUAL ENERGY PRODUCTION
7,215,900 kWh



TOTAL NUMBER OF HOUSEHOLD CONSUMPTION UNITS EQUAL TO THE CAPACITY
2,377 Households



NUMBER OF PANELS USED
17,820 Panels



AMOUNT OF GREENHOUSE GAS EMISSIONS AVOIDED
4,329,540 kg.



DATE OF COMMISSIONING
25/08/2017



ADANA

BURUK SPP

3,984 kWp



PROJECT'S INSTALLED CAPACITY

AC: 3,400 kWe DC: 3,984 kWp



ANNUAL ENERGY PRODUCTION

5,732,000 kWh



TOTAL NUMBER OF HOUSEHOLD CONSUMPTION UNITS EQUAL TO THE CAPACITY

1,888 Households



NUMBER OF PANELS USED

10,624 Panels



AMOUNT OF GREENHOUSE GAS EMISSIONS AVOIDED

3,439,200 kg.



DATE OF COMMISSIONING

18/11/2019



İZMİR

DEREKÖY SPP

3,533 kWp



PROJECT'S INSTALLED CAPACITY

AC: 3,000 kWe DC: 3,533 kWp



ANNUAL ENERGY PRODUCTION

6,206,400 kWh



TOTAL NUMBER OF HOUSEHOLD CONSUMPTION UNITS EQUAL TO THE CAPACITY

2,044 Households



NUMBER OF PANELS USED

8,832 Panels



AMOUNT OF GREENHOUSE GAS EMISSIONS AVOIDED

3,723,840 kg.



DATE OF COMMISSIONING

31/12/2020



İZMİR

KİRAZ SPP

2,218 kWp



PROJECT'S INSTALLED CAPACITY
AC: 1,980 kWe DC: 2,218 kWp



ANNUAL ENERGY PRODUCTION
3,780,400 kWh



TOTAL NUMBER OF HOUSEHOLD CONSUMPTION UNITS EQUAL TO THE CAPACITY
1,245 Households



NUMBER OF PANELS USED
7,920 Panels



AMOUNT OF GREENHOUSE GAS EMISSIONS AVOIDED
2,268,240 kg.



DATE OF COMMISSIONING
20/12/2018



İZMİR

BAĞARASI SPP

2,138 kWp



PROJECT'S INSTALLED CAPACITY
AC: 1,998 kWe DC: 2,138 kWp



ANNUAL ENERGY PRODUCTION
3,443,900 kWh



TOTAL NUMBER OF HOUSEHOLD CONSUMPTION UNITS EQUAL TO THE CAPACITY
1,134 Households



NUMBER OF PANELS USED
7,920 Panels



AMOUNT OF GREENHOUSE GAS EMISSIONS AVOIDED
2,066,340 kg.



DATE OF COMMISSIONING
12/03/2018



NEVŞEHİR

KARAPINAR SPP

2,138 kWp



PROJECT'S INSTALLED CAPACITY

AC: 1,920 kWe DC: 2,138 kWp



ANNUAL ENERGY PRODUCTION

3,609,500 kWh



TOTAL NUMBER OF HOUSEHOLD CONSUMPTION UNITS EQUAL TO THE CAPACITY

1,189 Households



NUMBER OF PANELS USED

7,920 Panels



AMOUNT OF GREENHOUSE GAS EMISSIONS AVOIDED

2,165,700 kg.



DATE OF COMMISSIONING

30/03/2018



ESKİŞEHİR

KAVACIK SPP

1,600 kWp



PROJECT'S INSTALLED CAPACITY

AC: 1,400 kWe DC: 1,600 kWp



ANNUAL ENERGY PRODUCTION

2,267,900 kWh



TOTAL NUMBER OF HOUSEHOLD CONSUMPTION UNITS EQUAL TO THE CAPACITY

747 Households



NUMBER OF PANELS USED

4,000 Panels



AMOUNT OF GREENHOUSE GAS EMISSIONS AVOIDED

1,360,740 kg.



DATE OF COMMISSIONING

10/02/2021



BALIKESİR

MARMARA ADALAR SPP

1,140 kWp



PROJECT'S INSTALLED CAPACITY
AC: 999 kWe DC: 1,140 kWp



ANNUAL ENERGY PRODUCTION
1,410,542 kWh



TOTAL NUMBER OF HOUSEHOLD CONSUMPTION UNITS EQUAL TO THE CAPACITY
465 Households



NUMBER OF PANELS USED
3,000 Panels



AMOUNT OF GREENHOUSE GAS EMISSIONS AVOIDED
662,955 kg.



DATE OF COMMISSIONING
19/12/2020



AFYONKARAHİSAR

GAZLIGÖL SPP

1,069 kWp



PROJECT'S INSTALLED CAPACITY
AC: 986 kWe DC: 1,069 kWp



ANNUAL ENERGY PRODUCTION
1,442,700 kWh



TOTAL NUMBER OF HOUSEHOLD CONSUMPTION UNITS EQUAL TO THE CAPACITY
475 Households



NUMBER OF PANELS USED
3,960 Panels



AMOUNT OF GREENHOUSE GAS EMISSIONS AVOIDED
865,620 kg.



DATE OF COMMISSIONING
18/01/2018



ADANA

ÖZBALTU SPP

249 kWp



PROJECT'S INSTALLED CAPACITY
AC: 240 kWe DC: 249 kWp



ANNUAL ENERGY PRODUCTION
339,900kWh



TOTAL NUMBER OF HOUSEHOLD CONSUMPTION UNITS EQUAL TO THE CAPACITY
112 Households



NUMBER OF PANELS USED
924 Panels



AMOUNT OF GREENHOUSE GAS EMISSIONS AVOIDED
203,940 kg.



DATE OF COMMISSIONING
03/09/2018



MUĞLA

ÇAVUŞ ADASI RADAR VE GÖZLEM İSTASYONU SPP

117 kWp



PROJECT'S INSTALLED CAPACITY
AC: 60 kWe DC: 117 kWp



ANNUAL ENERGY PRODUCTION
126,144 kWh



TOTAL NUMBER OF HOUSEHOLD CONSUMPTION UNITS EQUAL TO THE CAPACITY
44 Households



NUMBER OF PANELS USED
432 Panels



AMOUNT OF GREENHOUSE GAS EMISSIONS AVOIDED
75,686 kg.



DATE OF COMMISSIONING
02/09/2018



MANİSA

KÜTAŞ TARIM SPP

240 kWp



PROJECT'S INSTALLED CAPACITY
AC: 240 kWe DC: 240 kWp



ANNUAL ENERGY PRODUCTION
366,616 kWh



TOTAL NUMBER OF HOUSEHOLD CONSUMPTION UNITS EQUAL TO THE CAPACITY
121 Households



NUMBER OF PANELS USED
534 Panels



AMOUNT OF GREENHOUSE GAS EMISSIONS AVOIDED
219,970 kg.



DATE OF COMMISSIONING
07/06/2022



AKSARAY

BİYOSAN SPP

2,399 kWp



PROJECT'S INSTALLED CAPACITY
AC: 2,399 kWe DC: 2,399 kWp



ANNUAL ENERGY PRODUCTION
3,872,000 kWh



TOTAL NUMBER OF HOUSEHOLD CONSUMPTION UNITS EQUAL TO THE CAPACITY
1,275 Households



NUMBER OF PANELS USED
5,760 Panels



AMOUNT OF GREENHOUSE GAS EMISSIONS AVOIDED
2,323,200 kg.



DATE OF COMMISSIONING
26/01/2023





ONGOING PROJECTS

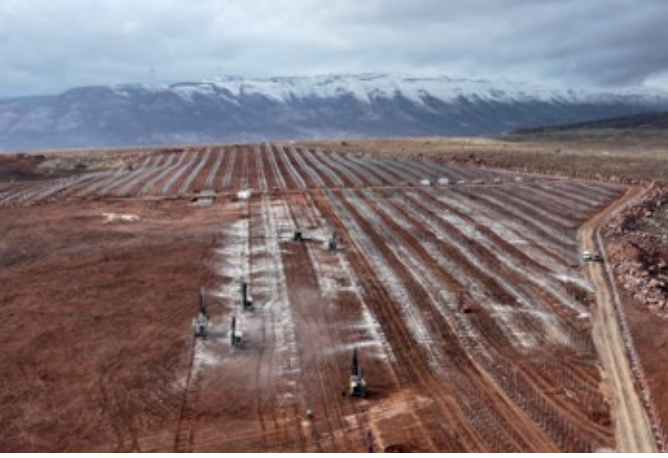


BİNGÖL

METAFOR HYBRID SPP

49,492 kWp

AC POWER OF THE PROJECT: 49,492 kWe
NUMBER OF PANELS USED: 89,986 Panels



AĞRI

YAKAAĞZI HYBRID SPP

29.996 kWp

AC POWER OF THE PROJECT: 29,995 kWe
NUMBER OF PANELS USED: 54,538 Panels



ADANA

ÖZ-ÖKMENLER SPP

952 kWp

AC POWER OF THE PROJECT: 770 kWe
NUMBER OF PANELS USED: 2,092 Panels



SAKARYA

SUMOTEKS SPP

885 kWp

AC POWER OF THE PROJECT: 660 kWe
NUMBER OF PANELS USED: 1,945 Panels





WPP PROJECTS





BİNGÖL
METAFOR WPP
49.7 MWm
NUMBER OF
TURBINESİ: 12



AĞRI
YAKAĞZI WPP
33.6 MWm
NUMBER OF
TURBINESİ: 8

ÇANKIRI
ÇERKEŞ WPP
50.4 MWm
NUMBER OF
TURBINES: 12



SİNOP
FENER WPP
4.2 MWm
NUMBER OF
TURBINES: 1





SİNOP
HAMSİ WPP
37.8 MWm
NUMBER OF
TURBINESİ: 9



KOCAELİ
KARAMÜRSEL WPP
33.6 MWm
NUMBER OF TURBINESİ: 8





ONGOING BPP PROJECTS





AKSARAY

BİYOSAN BIOENERGY PLANT (BPP+SPP HYBRID)

19,199 kWp



BPP PROJECT POWER

AC: 16,000 kWe DC: 16,800 kWp



SPP PROJECT POWER

AC: 2,399 kWe DC: 2,399 kWp



ANNUAL ENERGY PRODUCTION

132,000,000 kWh



TOTAL NUMBER OF HOUSEHOLD CONSUMPTION UNITS EQUAL TO THE CAPACITY

45,000 HOUSEHOLD



NUMBER OF PANELS USED

5,760 Panels



NUMBER OF STEAM BOILER USED

3 Piece



NUMBER OF STEAM TURBINE USED

3 Piece



AMOUNT OF GREENHOUSE GAS EMISSIONS AVOIDED

62,029,877 kg.



In our power plant; There will be many structures such as water treatment plant, cooling towers, analysis laboratories. Our facility will be built on 200+200 total 400 decares of land. It will be put into operation in a closed area of 20,000 m2 together with 12 decares of closed fuel stock area, boiler-turbine and auxiliary operation buildings.



EDİRNE
SK GOLD BIOENERGY PLANT
16,8 MWm



ANNUAL ENERGY PRODUCTION
132,800,000 kWh



NUMBER OF STEAM TURBINE USED
2 Piece



NUMBER OF STEAM BOILER USED
2 Piece



AMOUNT OF GREENHOUSE GAS EMISSIONS AVOIDED
100,928,000 kg.





Yetki Belgesi

GÖKTEKİN ENERJİ ANONİM ŞİRKETİ

18 Nisan 2007 tarihli ve 5627 sayılı 'Enerji Verimliliği Kanunu ve 27 Ekim 2011 tarihli ve 28097 sayılı Resmî Gazete'de yayımlanan 'Enerji Kaynaklarının ve Enerjinin Kullanımında Verimliliğin Artırılmasına Dair Yönetmelik kapsamında; enerji verimliliği alanında **Etüt, Proje ve Danışmanlık** Hizmetleri vermek üzere 30/12/2026 tarihine kadar yetkilendirilmiştir.

BELGE NO : OXÜ-EVD-002



**BİNA
VE HİZMETLER**

Prof. Dr. Turgay UZUN
Rektör

Dr. Abdullahi Buğrahan KARAVELİ
Bakan a.
EVÇED Başkanı



ADANA - HEAD OFFICE

Belediye Evleri Mah. 84249 Sok. No:2-E Çukurova/ADANA
+90 322 248 47 00

İSTANBUL - MARMARA REGIONAL OFFICE

Zorlu Center, Levazım Mah. Kuru Sok. No:2 Teras Evler Daire:24 Beşiktaş/İSTANBUL
+90 212 823 37 00

ANKARA - CENTRAL ANATOLIA REGIONAL OFFICE

Next Level Loft Ofis Kızılırmak Mah. Ufuk Üniv. Cad. No:4 Kat:9 Daire:30 Çankaya/ANKARA
+90 312 557 55 58



444 3 GES

goktekinenerji.com

info@goktekinenerji.com