



# 2022

## INTRODUCTION FILE

# Q4



**Göktekin  
Enerji**

Infinite energy of Turkey



# GÖKTEKİN GROUP BACKGROUND

While there is no capital or commercial affiliation with Göktekin Enerji, the first flagship company of the family, Göktekin Dış Ticaret, started its operations back in 1979, for the purpose of selling white goods and small home appliances manufactured under the brand name **GOSONIC**. Starting its export operations in 1988, the company abandoned its domestic operations from 2001 onwards and focused exclusively on export operations, becoming one of the most reliable home appliance brands in the Middle East. Reaching an annual mean export value of USD 100 Million, the company became a leader in these markets, owing to its product diversity and a wide dealership and service network.

Our founder Abdullah Göktekin grew his own business in the USA after graduating from two US-universities, majoring in International Trade Management and Administration. In 2014, he went to Erbil as the Iraq Country Manager of **GOSONIC**. Serving in this position for 1,5 years, Abdullah Göktekin left his position in Göktekin Dış Ticaret with the founding of Göktekin Enerji in 2015.



**GOSONIC®**

[gosonic.com.tr](http://gosonic.com.tr)

**Göktekin**  
iz bırakan dokunuşlar

[goktekin.com.tr](http://goktekin.com.tr)

**Göktekin  
Enerji**  
Türkiye'nin sonsuz enerjisi

[goktekinenerji.com](http://goktekinenerji.com)

# GÖKTEKİN ENERJİ

## THROUGH THE YEARS

Our company is an engineering firm founded in 2015 for the purpose of providing EPC (Engineering, Procurement & Construction) services. Spending the year 2016 as a preparatory period working on organizational structuring and strategic planning, we obtained all the relevant technical qualification certificates and quality certificates within the same year. On top of all of that, our company is the first EPC company who earned the right to operate as a consultant by obtaining the "Energy Efficiency Consultant" (EEC) certificate as a result of the training provided by the Ministry of Energy and Natural Resources. Beginning its project operations in 2017 and focusing on the construction of land-based solar power plants, our company first completed the Konya Kulu SPP with an installed capacity of 4.725 kWp and then installed two SPP in Afyon with an installed capacity of 1,069 kWp and started its EPC operations.

In 2018, we completed a 2 MW SPP in Nevşehir and a 6,5 MW SPP in Yozgat with our own resources and became an investor in the sector. Within the same year, we completed different projects for public and private sector investors and reached a total installed capacity of 13 MW. We also became the Turkey distributor of SolarEdge, a leading inverter brand in the Europe and US rooftop SPP markets, and began our commercial product sales operations.

In 2019, in line with our objective to further expand our investments, we installed land-based SPPs with a capacity of 13.700 kWp in Van, 12.414 kWp in Diyarbakır, 11.600 kWp in Osmaniye and 4.000 kWp in Adana, and our SPP investment portfolio reached a total installed capacity of over 50 MW. Within the same year, in Samsun, we installed the 5.2 MW Yeşil Küre Solar Power Plant, which was the third biggest rooftop SPP in Turkey at the time of commissioning, including roof and building reinforcement works. Continuing these achievements, we completed 13 new projects over a total capacity of 50 MW and we had a strong start in the rooftop SPP segment.

In light of the Self Consumption Regulations entering into force in May, we predicted the rapid growth potential of the rooftop SPP market and shaped our organizational structure according to the new market dynamics. In 2020, we set out to establish regional offices throughout Turkey and opened our first office in May in Istanbul. With the establishment of our Ankara and İzmir offices shortly after, we created a wide service network that covers the

Mediterranean, Southeastern Anatolia, Marmara, Central Anatolia and Aegean regions. Thanks to this, we increased our focus on rooftop SPP projects significantly. Although we spent the better part of 2020 under Covid-19 restrictions, we managed to complete 35 projects by the end of the year, most of them being rooftop SPPs, with a total installed capacity approaching 100 MW. 29 of these projects were managed and completed simultaneously. In addition to these efforts, we became the distributor of important panel manufacturers such as Hanwha and HT-SAAE. We completed and commissioned the 24 MW Adilcevaz-Alages, which is our licensed SPP investment, in Bitlis.

Increasing our rate of growth in the sustainable energy sector, we also started developing projects on wind power on top of solar power. By the end of 2020, we commissioned the first turbine for the 49.7 MW Metafor in Bingöl, which was our first wind power plant (WPP) project.

In addition to conducting new projects in the rooftop SPP sector, we built on our strong start with Metafor, increasing our WPP investment to 81 MW with the 33.6 MW Yakaagzi in Ağrı. Carrying out the 50.4 MW Çerkeş plant in Çankırı, the 33.6 MW Karamürsel plant in Kocaeli, the 37.8 MW Hamsi and 4.2 MW Fener plants in Sinop simultaneously, we are aiming to increase our EPC experience in wind power to a total installed capacity of 209 MW by the end of 2022.

Pursuant to our medium-term plans, we have also started working on Biomass power in addition to solar and wind power. In the upcoming days, we are going to complete the purchase of a biomass power project in Aksaray with a capacity of 16 MW. We are also executing projects, which will be completed within 1,5 years with an approximate capacity of 500 MW, based on two different business models, which will meet the electrical power requirements of massive industrial and service sector groups in Turkey.

On top of all this, we will also build on our experiences on sustainable energy in Turkey, carrying out foreign renewable energy projects with a total capacity of 1.000 MW, which have already been signed in three different countries as of today. Our long-term goal is to become a global player in the renewable energy sector. In line with this goal, over the course of 5 years, we are planning to generate at least 80% of our revenue from our operations in foreign countries, while also maintaining our position as the leading EPC company in Turkey.

**Our company took the number 10 spot in the list for The Fastest Growing Companies in Turkey, which was published in 2022 by the Turkish Union of Chambers and Commodity Exchanges, and also came 444th nationwide and 30th in the energy sector in the list for The 500 Biggest Companies in Turkey, which was published by the Fortune magazine.**





**Abdullah GÖKTEKİN**  
*Chairman of the Board of Directors*

---

### **Dear Sun Enthusiasts,**

After the oil crisis of the 1970s, the importance of energy was better recognized by all the countries in the world. After this crisis, countries started to take major steps towards diversifying their energy sources and use alternative energy sources. Especially the countries that import their energy started focusing on the sustainable usage of energy. By the 2000s, efforts on renewable energy systems picked up pace throughout the World, and rapid developments were seen with the advancement of the technology. As solar power is one of the most abundant sources on earth in terms of sustainable energy sources, it was seen that countries placed special importance on the use of solar energy. Many states, including Turkey established significant regulations and incentive mechanisms for the purpose of generating electricity from solar energy.

According to the data from the International Renewable Energy Agency, the total installed capacity of solar power worldwide is 583.500 MW, while this figure is 6.232 MW for our country. Although the use of solar energy in our country dates as far back as the 70s, the most significant trend towards development that can be considered as a milestone was seen in 2015 and in fact, in 2017, we achieved the top spot in Europe as the country that installed the most number of solar power plants (SPP). Between the years 2009 to 2014, while I was studying in the USA, I have personally witnessed the importance of the solar power sector, especially in terms of household installations, on the development of the country's industry and the growth of their economy.

When I returned to Turkey, I realized that I was looking for alternatives to increase the strength of our industry players who were in competition with world-class brands in foreign and domestic markets and to reduce their costs. Anticipating the future importance of the renewable energy sector for our country, I founded Göktekin Enerji in 2015. Göktekin Enerji is an engineering firm that provides EPC (Engineering, Procurement & Construction) services. In line with our long-term strategies, our country spent the year 2016 as a preparatory period, established its technical and administrative infrastructure and successfully completed all the necessary certification procedures. Acting on the main principle of achieving efficiency, our company became the first and only EPC company that holds the Energy Efficiency Consultant (EEC) certification, which is issued by the Ministry of Energy and Natural Resources.

The self-consumption regulations that entered into force in our country in 2019 paved the way for future rooftop SPP investments. I believe that this will transform the solar energy sector into a 10-billion dollar market. The lower investment costs compared to the previous years with the help of the recent developments in relevant technologies have made solar power more attractive. Additionally, we can expect an even further growth in the market from 2021 onwards, with the gradual implementation of hybrid plant models.

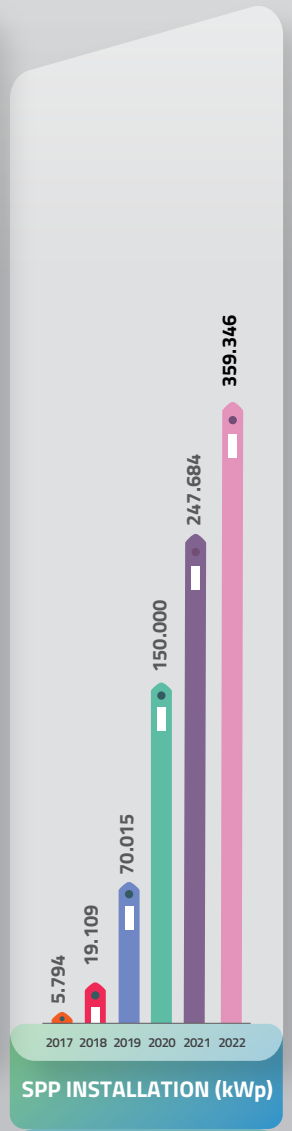
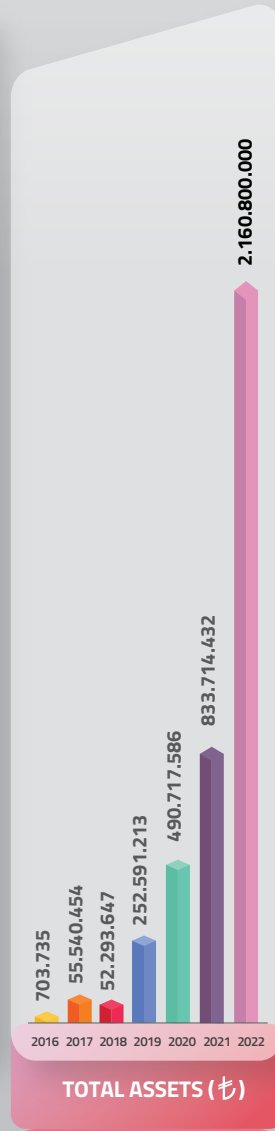
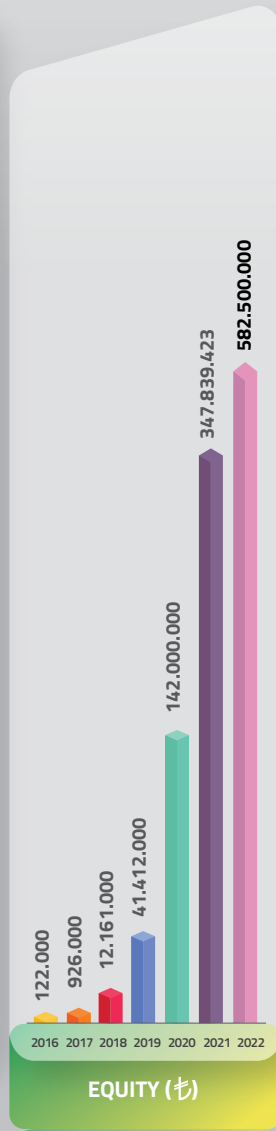
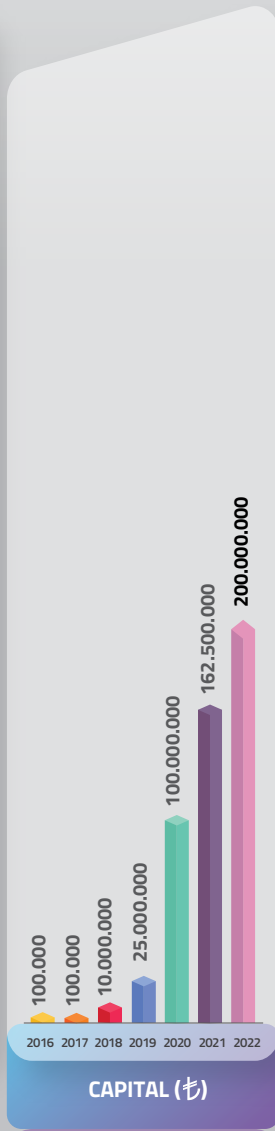
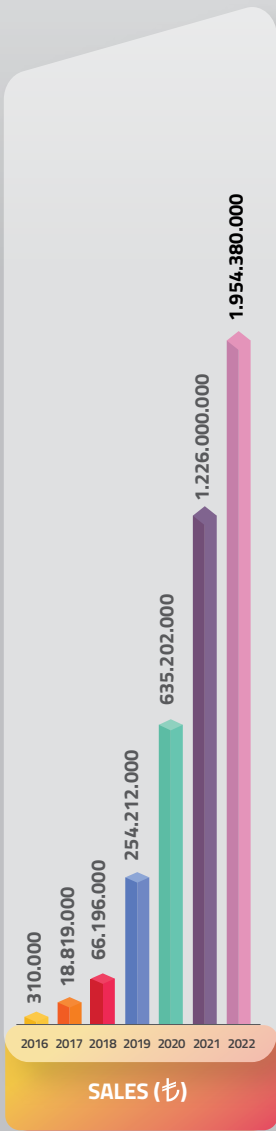
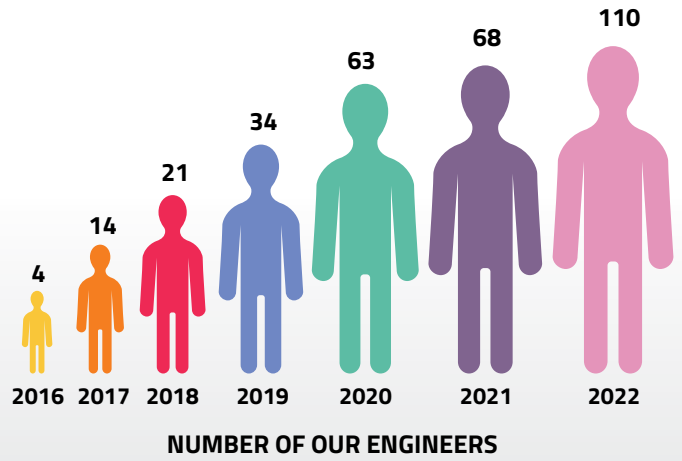
As a result of our analysis, we have concluded that, aside from technological advancements, the main reason behind the rapid growth of the renewable energy sector in Europe and in the US was to create right financing solutions. Therefore it was imperative that we support our industrialists in their quests to achieve long-term and affordable financing in rooftop SPP investments. For this purpose, we provide financial consultancy services to our clients, helping them find the right financing solutions through the strong banks in our country. With the ever-evolving technologies used in the field of solar power becoming increasingly more affordable, SPPs have now become very profitable investments that pay for themselves in no time.

The lion's share of our country's foreign trade deficit is made up of energy imports. One of the most important factors behind our decision to found Göktekin Energy was our desire to reduce this foreign dependency and ensure that our industrial players are able to generate their own energy and have better global competitive power.

As Göktekin Energy, to this day we have finalized more than 100 SPP projects with a total installed capacity exceeding 240 MW. In order to support the energy production of our country, we have carried out SPP investments in different provinces for more than 50 MW of installed capacity. Additionally, by the end of 2020, we have commissioned the first turbine of our 50 MW wind power plant (WPP) investment, ensuring eligibility for YEKDEM (Renewable Energy Sources Support Mechanism).

At the beginning of 2021, we have increased our focus on WPP projects and added 5 new WPP investments in different regions of Turkey to our portfolio. Our target is to reach a total installed wind power capacity exceeding 209 MW by the end of 2022. In addition to solar and wind power, we also aim to commission at least 2 biomass investments within this year.













# GÖKTEKİN ENERJİ IN NUMBERS



# OUR AREAS OF ACTIVITY



## Turnkey SPP Application (Process Management from A to Z)

-  Investment and Process Consultancy
-  Creating Consumption Analyses
-  Field of Application Survey
-  Production Simulations
-  Investment Feasibility
-  Permits and Bureaucratic Process Management
-  Project Design
-  Optimal Product Supply
-  Implementation and Installation
-  Testing, Commissioning and Acceptance Procedures
-  After Sales Maintenance and Operation
-  Monitoring (Performance Monitoring)

## EEC (Energy Efficiency Consultancy)

- Preliminary Survey
- Detailed Survey
- Efficiency-Increasing Project Designs
- Energy Management

## Commercial Product Sales

- Turkey Distributor of HT-SAAE Solar Panels
- Turkey Distributor of Solaredge Inverters

## Maintenance | Operation Services

# WHY GÖKTEKİN ENERJİ



EPC over 360 MW,  
Rooftop SPP over 247 MW  
installation experience, more than  
160 different roof SPP projects



80 MW WPP  
investment



The first and only SPP installer  
(EPC) that holds the Energy  
Efficiency Consultancy (EEC)  
certificate issued by the Ministry  
of Energy and Natural Resources



110 engineer staff, expert,  
experienced technical and  
administrative staff



Product selection and  
supply from the world's  
top and leading brands



Production  
performance  
guarantee



"Independent Technical Consultant  
Auditing" throughout the term of  
application



Process management from A  
to Z including distinguished  
roof and building reinforcement  
services by Göktekin Yapı



All Risk Installation  
Insurance throughout the  
term of application



High standards of occupational  
health and safety



For 2 years after project delivery;  
✓ Monitoring services  
(Full-time production and performance monitoring)  
✓ Periodic maintenance and testing  
✓ Monthly production and performance  
reporting



# OUR FINANCING SOLUTIONS

We provide financing solutions from distinguished banks in Turkey for your SPP investments.



## Göktekin Enerji - İş Leasing Strategic Cooperation Protocol

*Abdullah Göktekin*

*Göktekin Enerji, Chairman of the Board of Directors*

*Mehmet Karakılıç*

*İş Leasing, CEO*

Every company has different financial means. That's why some companies may secure their financing easily while others may struggle. We have a very close relationship with 10 financial institutions who finance and are willing to finance SPP investments geared towards self-consumption. We are on the "white list" of almost all of them, meaning we work as an accredited business partner. That's why when the investor decides to go through with their investment with us, the financial institutions consider the risk of application as very low.

Among these financial institutions, we have signed cooperation protocols with İş, QNB Finans and Garanti Leasing. The investor goes through this process only once, but since we constantly refer projects to these financial institutions, they are able to offer us much more favorable rates.



## Göktekin Enerji - QNB Leasing Strategic Cooperation Protocol

*Abdullah Göktekin*

*Göktekin Enerji, Chairman of the Board of Directors*

*Metin Karabiber*

*QNB Leasing, CEO*

As we are much more familiar with the details than the investor, we are able to monitor the loan procedures on behalf of the investing company. Together with a feasibility study, we negotiate the investment loan/equity ratios with the financial institution on behalf of the companies. This provides operational convenience for the companies.

Also thanks to our established relationships with institutions that provide renewable energy sources financing with lower interest rates such as KGF, Eximbank and Turseff, we support the investors in securing affordable financing.

# GÖKTEKİN ENERJİ

## OPERATION, MAINTENANCE & REPAIR SERVICES



Another one of our service models that will provide added value to your company after the turnkey project design and delivery of your solar power plant, is our operation, maintenance and repair services.

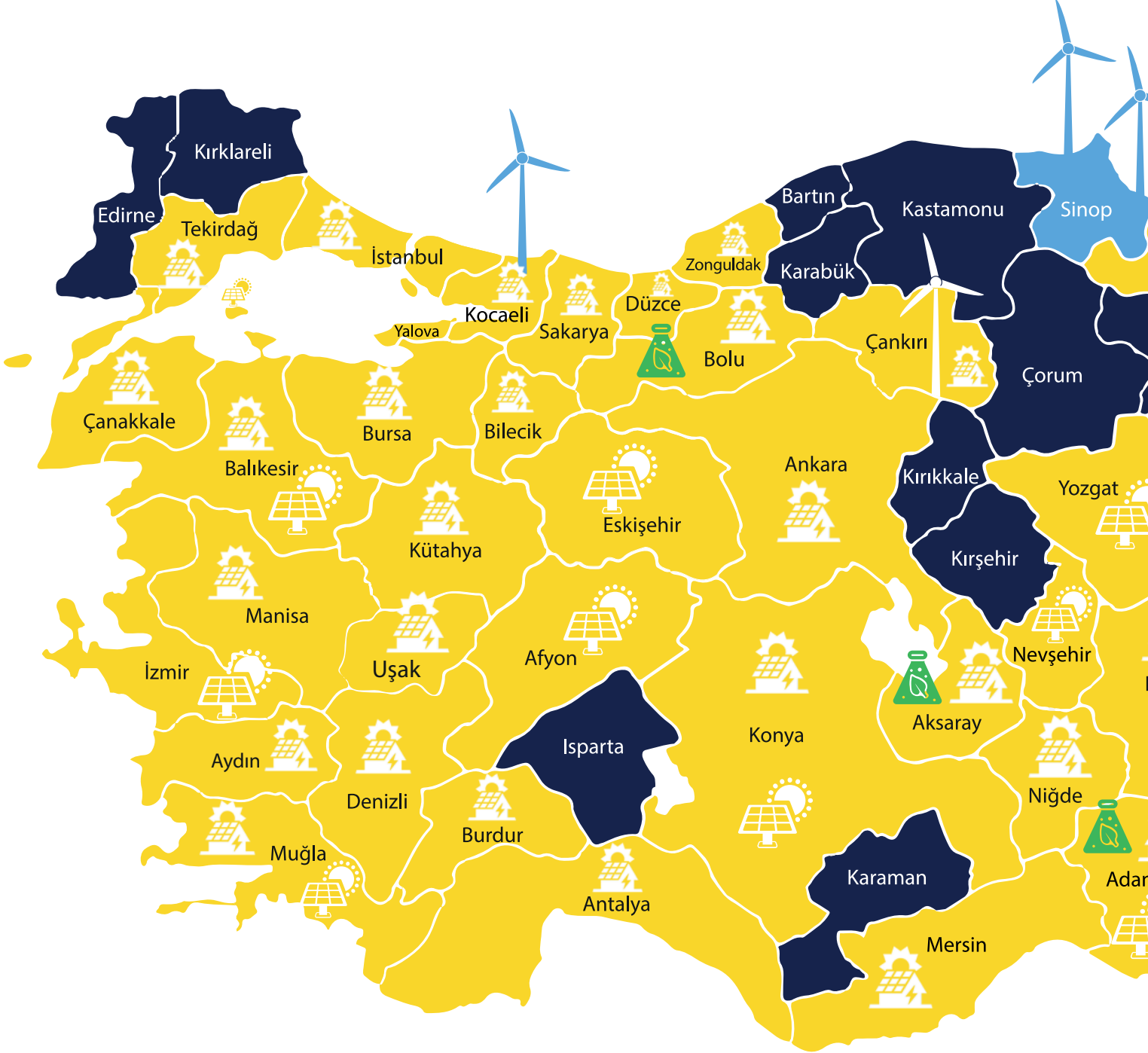
The most important purpose of these services that are provided by a special team consisting of engineers who are experts in their field, is to ensure that the solar power plants that we install run with maximum efficiency. This allows us to reduce the time required for the return on your SPP investment and prolong its service life. Our monitoring division within the operation, maintenance and repair team review the critical parameters

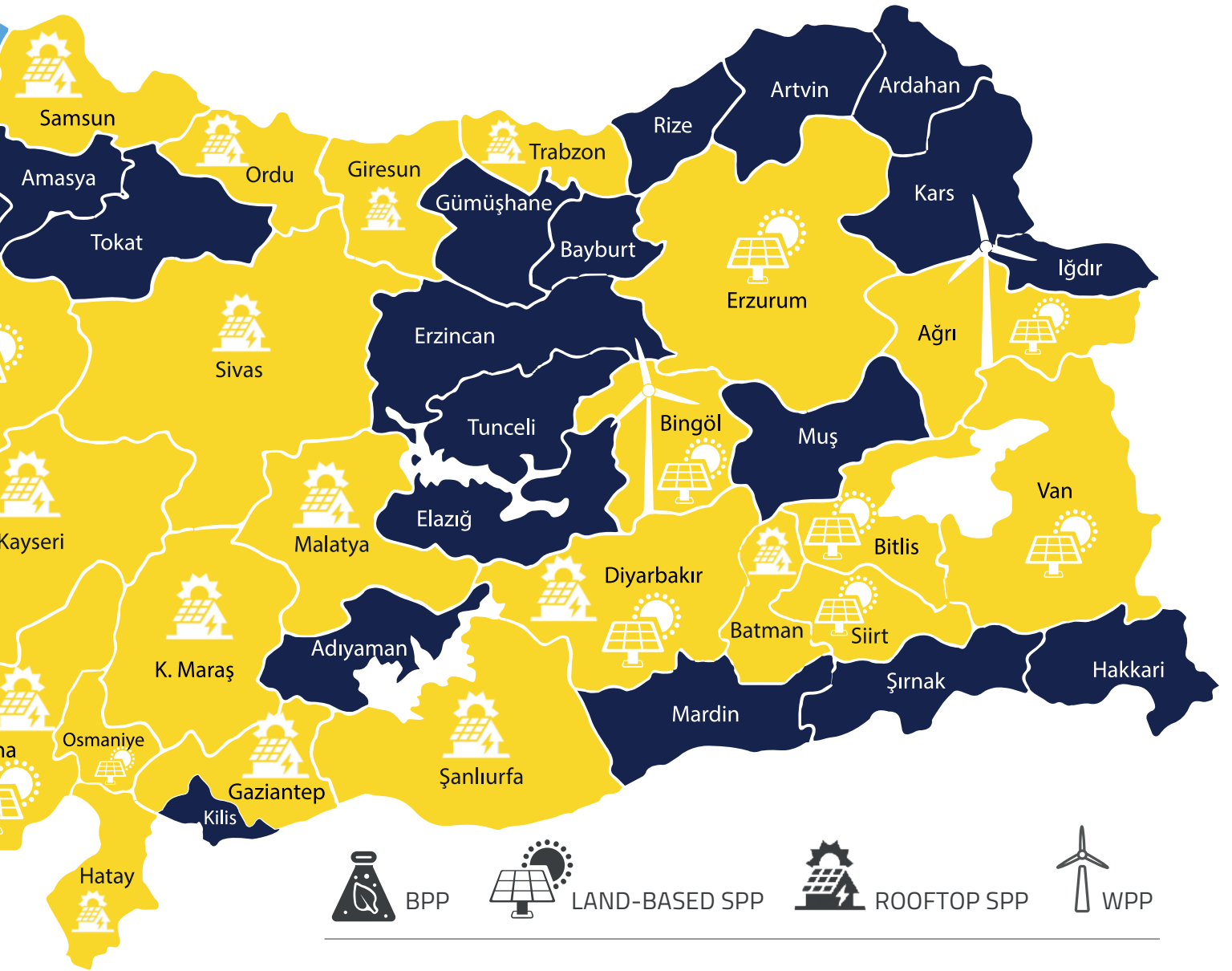
pertaining to your solar power plant on a continuous basis and ensure that they produce optimal levels of energy.

In case of a failure that may affect the efficiency of your plant, the monitoring division identifies the issue instantly. The necessary response is planned and coordinated from a single central location. With visits from the remote access or on-site teams, it is ensured that the failure is remedied as soon as possible. All analyses and system data collected with regards to the condition of your SPP investment are shared with you on a regular basis. Your solar power plant is constantly supervised within the framework of this transparent structure and it is ensured that your company has access to clean energy at all times without interruption.



# GÖKTEKİN ENERJİ PROJECT SITES





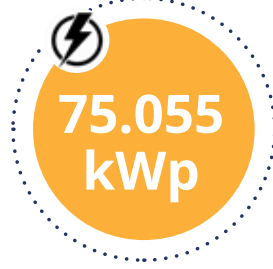
## COMPLETED PROJECTS

ADANA	BOSSA SPP	11.740	kWp	UŞAK	BEP2 2 SPP	925	kWp
K. MARAŞ	İSKUR TEKSTİL SPP	9.448	kWp	BURSA	ERŞAT TEKSTİL 1 SPP	878	kWp
ADANA	ABDİOĞULLARI PLASTİK 8 SPP	7.391	kWp	TEKİRDAĞ	AKSA JENERATÖR SPP	867	kWp
KONYA	BÜROTIME SPP	7.139	kWp	MERSİN	MESKİ KISIM 3-YENİŞEHİR SPP	838	kWp
ADANA	OĞUZ TEKSTİL 3 SPP	6.268	kWp	MUĞLA	GÜLPORT BODRUM SPP	797	kWp
ADANA	ATLAS DENİM TEKSTİL SPP	6.225	kWp	MERSİN	MESKİ KISIM 1-TARSUS SPP	680	kWp
SAMSUN	TİRYAKİ SPP	5.183	kWp	AYDIN	ABALIOĞU BALIK SPP	671	kWp
K. MARAŞ	MARİTAŞ TEKSTİL SPP	5.112	kWp	UŞAK	PAK PAMUK SPP	608	kWp
KAYSERİ	ERCİYES İSTİKBAL SPP	4.901	kWp	TEKİRDAĞ	RAN TEKSTİL SPP	589	kWp
GAZİANTEP	EKONET TEKSTİL SPP	4.550	kWp	MERSİN	BERDAN CİVATA 5 SPP	571	kWp
KAYSERİ	ERCİYES ELDA HALI SPP	4.473	kWp	BURSA	İŞIKSOY TEKSTİL TEKSTÜRİZE SPP	558	kWp
KÜTAHYA	NG KÜTAHYA SERAMİK SPP	3.987	kWp	BALIKESİR	SAĞLAM METAL SPP	557	kWp
GAZİANTEP	KEVSER HALI SPP	3.824	kWp	ADANA	ÇEKMEZ PLASTİK SPP	551	kWp
KONYA	BÜROTIME 2 SPP	3.358	kWp	HATAY	TARIK AMBALAJ SPP	497	kWp
KAYSERİ	ERCİYES HES KABLO SPP	3.281	kWp	İSTANBUL	ESENYURT SPP	474	kWp
ANKARA	ASSAN GROUP SPP	3.160	kWp	MALATYA	MİRAN OTOMOTİV SPP	470	kWp
K. MARAŞ	İSKUR MODENA SPP	2.528	kWp	ADANA	KÖSEOĞLU AGRO TARIM SPP	437	kWp
UŞAK	ÖZEĞE TEKSTİL SPP	2.476	kWp	ANKARA	OLİMPİYAT ISI SPP	404	kWp
ADANA	PALMIYE TEKSTİL SPP	2.400	kWp	K. MARAŞ	ING BANK SPP	379	kWp
KONYA	KON-ET SPP	2.334	kWp	MERSİN	BERDAN CİVATA 6 SPP	358	kWp
K. MARAŞ	AKYILDIZ MUTFAK SPP	2.318	kWp	İZMİR	EGE POYRAZ CAM SPP	320	kWp
KAYSERİ	ERCİYES FORM SÜNGER SPP	2.300	kWp	MALATYA	BİR DAMLA SPP	300	kWp
ADANA	OĞUZ TEKSTİL 1 SPP	2.278	kWp	KONYA	ŞEVKET ÖZLÜ TARIM SPP	295	kWp
ADANA	OĞUZ TEKSTİL 2 SPP	2.199	kWp	ANTALYA	TOPUZ İMALAT SPP	288	kWp
K. MARAŞ	İSKUR DENİM SPP	2.180	kWp	KOCAELİ	BİZİM TOPTAN SPP	264	kWp
GAZİANTEP	FLAMENT SPP	2.140	kWp	ADANA	VERİ MERKEZİ SPP	250	kWp
ADANA	ERBEY DOKUMA SPP	2.078	kWp	ADANA	ATLAS FİDE SPP	205	kWp
OSMANIYE	BONİP TEKSTİL SPP	1.944	kWp	ADANA	ŞAHİNAĞA BERKEMEN ÇATI SPP	182	kWp
MUĞLA	GÜLLÜK SPP	1.851	kWp	ADANA	LMC SPP	145	kWp
ŞANLIURFA	EYVAN TEKSTİL SPP	1.814	kWp	KOCAELİ	COLGATE-PALMOLİVE SPP	101	kWp
BURSA	ERŞAT TEKSTİL 2 SPP	1.776	kWp	KONYA	KAMER KOLEJİ SPP	77	kWp
GAZİANTEP	İKRA GIDA SPP	1.758	kWp	ADANA	GÖKBORA LOJİSTİK SPP	72	kWp
ADANA	ABDİOĞULLARI PLASTİK 2 SPP	1.746	kWp	ADANA	TEKFEN İNŞAAT SPP	47	kWp
DIYARBAKIR	İSKUR İPLİK SPP	1.714	kWp	İSTANBUL	EKSİM HOLDİNG SPP	41	kWp
ADANA	OĞUZ GIDA STARKON SPP	1.627	kWp	İSTANBUL	BOYBO TEKSTİL SPP	40	kWp
ADANA	ÇOKYAŞAR TEL SPP	1.557	kWp	BİTLİS	ALAGES/ADİLCEVAZ SPP	24.193	kWp
MERSİN	SEÇİL KAUÇUK 2 SPP	1.450	kWp	VAN	BAŞKALE SPP	13.701	kWp
GAZİANTEP	DURMAZ ÇELİK SPP	1.411	kWp	DIYARBAKIR	KESENTAŞ SPP	12.415	kWp
NİĞDE	AKMİNA MAKİNE TEKSTİL SPP	1.333	kWp	ERZURUM	ERZURUM - AŞKALE SPP	8.467	kWp
MERSİN	MESKİ KISIM 2-TOROSLAR SPP	1.303	kWp	AĞRI	SUÇATAĞI SPP	7.020	kWp
ADANA	ADAWALL SPP	1.277	kWp	YOZGAT	SARAYKÖY SPP	6.415	kWp
KAYSERİ	MİLKAY TEKNİK TEKSTİL SPP	1.266	kWp	OSMANIYE	DÜZİÇİ SPP	5.799	kWp
ADANA	ABDİOĞULLARI PLASTİK 7 SPP	1.261	kWp	OSMANIYE	YAVERİYE SPP	5.789	kWp
DÜZCE	ÇOKYAŞAR HALAT SPP	1.253	kWp	KONYA	KULU DOĞUTEPE SPP	4.722	kWp
KOCAELİ	MPS METAL SPP	1.253	kWp	ADANA	BURUK SPP	3.984	kWp
K. MARAŞ	RİMSA TEKSTİL SPP	1.250	kWp	İZMİR	İZMİR - DEREKÖY SPP	3.533	kWp
İSTANBUL	DENİZPEN PLASTİK SPP	1.231	kWp	AKSARAY	BİYOSAN SPP	2.390	kWp
UŞAK	BEP2 GERİ DÖNÜŞÜM SPP	1.227	kWp	İZMİR	KIRAZ SPP	2.218	kWp
TEKİRDAĞ	AKEL SUNİ DERİ 1 SPP	1.216	kWp	İZMİR	BAĞARASI SPP	2.138	kWp
UŞAK	KUYUCAK BATTANIYE SPP	1.190	kWp	NEVŞEHİR	KARAPINAR SPP	2.138	kWp
BURSA	İŞIKSOY TEKSTİL MERKEZ SPP	1.167	kWp	ESKİŞEHİR	ESKİŞEHİR - KAVACIK SPP	1.600	kWp
ADANA	ABDİOĞULLARI PLASTİK 1 SPP	1.164	kWp	BALIKESİR	MARMARA ADALAR SPP	1.140	kWp
UŞAK	AY TEKSTİL SPP	1.149	kWp	AFYON	GAZLIGÖL SPP	1.069	kWp
TEKİRDAĞ	AKEL SUNİ DERİ 2 SPP	1.148	kWp	NEVŞEHİR	AKMİNA MİLKAY 2 SPP	256	kWp
DENİZLİ	YONGA MOBİLYA SPP	1.133	kWp	ADANA	ÖZBALTU SPP	249	kWp
ANKARA	OSMANLI REKLAM SPP	1.105	kWp	MANİSA	KÜTAŞ TARIM SPP	240	kWp
MERSİN	TÜMEN TARIM 1 SPP	1.042	kWp	MUĞLA	ÇAVUŞ ADASI RADAR İST. SPP	117	kWp
ANKARA	AKMERMER SPP	1.005	kWp	ADANA	TARHAN BERKEMEN SPP	71	kWp
KÜTAHYA	BOLİŞ PLASTİK SPP	970	kWp	ADANA	TÜMEN TARIM SPP	60	kWp
MERSİN	SEÇİL KAUÇUK 1 SPP	969	kWp				

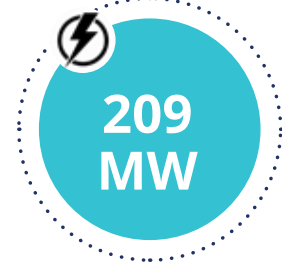
## COMPLETED PROJECTS TOTAL POWER



## ONGOING PROJECTS TOTAL POWER



## WPP PROJECTS TOTAL POWER



## ONGOING PROJECTS

KÜTAHYA	NG KÜTAHYA SERAMİK 2 SPP	18.720	kWp
MERSİN	SERTEL VİDA SPP	7.004	kWp
AKSARAY	MERCEDES BENZ 1 SPP	6.195	kWp
İZMİR	JTI TÜTÜN SPP	5.690	kWp
YOZGAT	GEDAŞ GENEL GIDA SPP	4.251	kWp
MALATYA	İNTEM TRİKO SPP	3.882	kWp
UŞAK	ÖZEĞE TEKSTİL 2 SPP	3.649	kWp
KAYSERİ	ERCİYES BELLONA 6 SPP	3.880	kWp
İZMİR	VE-GE KAĞIT SPP	2.547	kWp
GAZİANTEP	ÇABUK AMBALAJ SPP	2.431	kWp
TRABZON	GÜNDOĞDU MOBİLYA SPP	1.889	kWp
BİLEÇİK	HEPŞEN METAL SPP	1.515	kWp
KÜTAHYA	GEPA İPLİK SPP	1.385	kWp
İSTANBUL	SERTPLAS SPP	1.298	kWp
AKSARAY	MERCEDES BENZ 2 SPP	1.273	kWp

ADANA	EPAŞ DÖKÜM SPP	1.249	kWp
UŞAK	KYC TEKSTİL 1 SPP	1.100	kWp
KOCAELİ	CPS PRESSFORM SPP	1.099	kWp
ADANA	ÖZ-ÖKMENLER SPP	952	kWp
BATMAN	MSA PLASTİK SPP	860	kWp
BOLU	ALPPLAS SPP	787	kWp
KÜTAHYA	BARON ÇORAP SPP	501	kWp
KÜTAHYA	DOĞUKAN GİPE İPLİK SPP	501	kWp
ADANA	ADAWALL SPP	407	kWp
MALATYA	YİĞİTLER OTOMOTİV SPP	402	kWp
İSTANBUL	SERİN CİVATA SPP	480	kWp
GAZİANTEP	HUZUR TEL SPP	390	kWp
KAYSERİ	ERCİYES BELLONA PAZ. SPP	388	kWp
ORDU	BELFOR TEKSTİL SPP	278	kWp
SİVAS	YÖ-RE KÖMÜR SPP	52	kWp

## WPP PROJECTS

ÇANKIRI	ÇERKEŞ WPP	50,4	MW
BİNGÖL	METAFOR WPP	49,7	MW
SİNOP	HAMSİ WPP	37,8	MW
KOCAELİ	KARAMÜRSEL WPP	33,6	MW
AĞRI	YAKAĞZI WPP	33,6	MW
SİNOP	FENER WPP	4,2	MW

## BPP PROJECTS

AKSARAY	BIOENERGY PLANT (BES+GES HYBRID)	19.199	kWp
---------	----------------------------------	--------	-----





# ROOFTOP PROJECTS



# KAHRAMANMARAŞ

## İSKUR TEKSTİL SPP

### 9.448 kWp



**PROJECT'S INSTALLED CAPACITY**  
AC: 8.400 kWe DC: 9.448 kWp



**ANNUAL ENERGY PRODUCTION**  
13.104.680 kWh



**TOTAL NUMBER OF HOUSEHOLD CONSUMPTION UNITS EQUAL TO THE CAPACITY**  
4.316 Households



**NUMBER OF PANELS USED**  
22.230 Panels



**AMOUNT OF GREENHOUSE GAS EMISSIONS AVOIDED**  
6.158.302 kg.



**DATE OF COMMISSIONING**  
07/01/2022



# ADANA

## ABDİOĞULLARI PLASTİK 8 SPP

### 7.391 kWp



**PROJECT'S INSTALLED CAPACITY**  
AC: 6.210 kWe DC: 7.391 kWp



**ANNUAL ENERGY PRODUCTION**  
8.948.642 kWh



**TOTAL NUMBER OF HOUSEHOLD CONSUMPTION UNITS EQUAL TO THE CAPACITY**  
2.948 Households



**NUMBER OF PANELS USED**  
18.760 Panels



**AMOUNT OF GREENHOUSE GAS EMISSIONS AVOIDED**  
4.659.404 kg.



**DATE OF COMMISSIONING**  
04/02/2021



# KONYA

## BÜROTIME SPP

### 7.139 kWp



**PROJECT'S INSTALLED CAPACITY**  
AC: 5.000 kWe DC: 7.139 kWp



**ANNUAL ENERGY PRODUCTION**  
10.086.594 kWh



**TOTAL NUMBER OF HOUSEHOLD CONSUMPTION UNITS EQUAL TO THE CAPACITY**  
3.323 Households



**NUMBER OF PANELS USED**  
16.884 Panels



**AMOUNT OF GREENHOUSE GAS EMISSIONS AVOIDED**  
4.740.390 kg.



**DATE OF COMMISSIONING**  
12/05/2021



bürotime

# ADANA

## BOSSA SPP

### 11.740 kWp



**PROJECT'S INSTALLED CAPACITY**  
9.000 kWe / 11.740 kWp



**ANNUAL ENERGY PRODUCTION**  
14.346.845 kWh



**TOTAL NUMBER OF HOUSEHOLD CONSUMPTION UNITS EQUAL TO THE CAPACITY**  
4.726 Households



**NUMBER OF PANELS USED**  
29.214 Panels



**AMOUNT OF GREENHOUSE GAS EMISSIONS AVOIDED**  
8.607.049 kg.



**DATE OF COMMISSIONING**  
24/09/2020



Bossa

# ADANA

ATLAS DENİM TEKSTİL SPP

6.225 kWp



## PROJECT'S INSTALLED CAPACITY

AC: 4.995,60 kWe DC: 6.225,28 kWp



## ANNUAL ENERGY PRODUCTION

7.621.013 kWh



## TOTAL NUMBER OF HOUSEHOLD CONSUMPTION UNITS EQUAL TO THE CAPACITY

2.510 Households



## NUMBER OF PANELS USED

19.454 Panels



## AMOUNT OF GREENHOUSE GAS EMISSIONS AVOIDED

4.572.607 kg.



## DATE OF COMMISSIONING

29/07/2020



# ADANA

OĞUZ TEKSTİL 3 SPP

6.268 kWp



## PROJECT'S INSTALLED CAPACITY

AC: 4.833 kWe DC: 6.268 kWp



## ANNUAL ENERGY PRODUCTION

7.926.934 kWh



## TOTAL NUMBER OF HOUSEHOLD CONSUMPTION UNITS EQUAL TO THE CAPACITY

2.611 Households



## NUMBER OF PANELS USED

14.888 Panels



## AMOUNT OF GREENHOUSE GAS EMISSIONS AVOIDED

3.723.535 kg.



## DATE OF COMMISSIONING

15/02/2021



# SAMSUN

## YEŞİL KÜRE SPP

### 5.183 kWp



**PROJECT'S INSTALLED CAPACITY**  
AC: 3.996 kWe DC: 5.183,20 kWp



**ANNUAL ENERGY PRODUCTION**  
6.306.000 kWh



**TOTAL NUMBER OF HOUSEHOLD CONSUMPTION UNITS EQUAL TO THE CAPACITY**  
2.077 Households



**NUMBER OF PANELS USED**  
16.720 Panels



**AMOUNT OF GREENHOUSE GAS EMISSIONS AVOIDED**  
3.783.600 kg.



**DATE OF COMMISSIONING**  
16/11/2019



# KAHRAMANMARAŞ

## MARİTAŞ TEKSTİL SPP

### 5.112 kWp

MARİTAŞ | TEKSTİL



**PROJECT'S INSTALLED CAPACITY**  
AC: 4.200 kWe DC: 5.112 kWp



**ANNUAL ENERGY PRODUCTION**  
7.489.631 kWh



**TOTAL NUMBER OF HOUSEHOLD CONSUMPTION UNITS EQUAL TO THE CAPACITY**  
2.452 Households



**NUMBER OF PANELS USED**  
12.780 Panels



**AMOUNT OF GREENHOUSE GAS EMISSIONS AVOIDED**  
4.466.779 kg.



**DATE OF COMMISSIONING**  
27/05/2021



# GAZIANTEP

## KEVSER HALI SPP

### 3.824 kWp



**PROJECT'S INSTALLED CAPACITY**  
AC: 3.146,4 kWe DC: 3.824 kWp



**ANNUAL ENERGY PRODUCTION**  
5.740.233 kWh



**TOTAL NUMBER OF HOUSEHOLD CONSUMPTION UNITS EQUAL TO THE CAPACITY**  
1.891 Households



**NUMBER OF PANELS USED**  
9.560 Panels



**AMOUNT OF GREENHOUSE GAS EMISSIONS AVOIDED**  
3.444.140 kg.



**DATE OF COMMISSIONING**  
05/05/2021

# KONYA

## BÜROTIME 2 SPP

### 3.358 kWp



**PROJECT'S INSTALLED CAPACITY**  
AC: 2.500 kWe DC: 3.358 kWp



**ANNUAL ENERGY PRODUCTION**  
4.897.902 kWh



**TOTAL NUMBER OF HOUSEHOLD CONSUMPTION UNITS EQUAL TO THE CAPACITY**  
1.613 Households



**NUMBER OF PANELS USED**  
7.902 Panels



**AMOUNT OF GREENHOUSE GAS EMISSIONS AVOIDED**  
2.302.014 kg.



**DATE OF COMMISSIONING**  
12/05/2021

# KAHRAMANMARAŞ

## İSKUR MODENA SPP

### 2.528 kWp



**PROJECT'S INSTALLED CAPACITY**  
AC: 2.420 kWe DC: 2.528,33 kWp



**ANNUAL ENERGY PRODUCTION**  
3.534.249 kWh



**TOTAL NUMBER OF HOUSEHOLD CONSUMPTION UNITS EQUAL TO THE CAPACITY**  
1.164 Households



**NUMBER OF PANELS USED**  
5.949 Panels



**AMOUNT OF GREENHOUSE GAS EMISSIONS AVOIDED**  
1.660.826 kg.



**DATE OF COMMISSIONING**  
25/03/2022



# ADANA

## PALMIYE TEKSTİL SPP

### 2.400 kWp



**PROJECT'S INSTALLED CAPACITY**  
AC: 2.000 kWe DC: 2.400 kWp



**ANNUAL ENERGY PRODUCTION**  
2.895.749 kWh



**TOTAL NUMBER OF HOUSEHOLD CONSUMPTION UNITS EQUAL TO THE CAPACITY**  
954 Households



**NUMBER OF PANELS USED**  
7.500 Panels



**AMOUNT OF GREENHOUSE GAS EMISSIONS AVOIDED**  
1.737.449 kg.



**DATE OF COMMISSIONING**  
22/06/2020



# KONYA

## KONET SPP

### 2.334 kWp



**PROJECT'S INSTALLED CAPACITY**  
AC: 2.046 kWe DC: 2.334,40 kWp



**ANNUAL ENERGY PRODUCTION**  
3.252.290 kWh



**TOTAL NUMBER OF HOUSEHOLD CONSUMPTION UNITS EQUAL TO THE CAPACITY**  
1.071 Households



**NUMBER OF PANELS USED**  
5.836 Panels



**AMOUNT OF GREENHOUSE GAS EMISSIONS AVOIDED**  
1.527.965 kg.



**DATE OF COMMISSIONING**  
15/11/2021



# KAHRAMANMARAŞ

## AKYILDIZ MUTFAK SPP

### 2.318 kWp



**PROJECT'S INSTALLED CAPACITY**  
AC: 1.987,20 kWe DC: 2.318,40 kWp



**ANNUAL ENERGY PRODUCTION**  
3.338.918 kWh



**TOTAL NUMBER OF HOUSEHOLD CONSUMPTION UNITS EQUAL TO THE CAPACITY**  
1.100 Households



**NUMBER OF PANELS USED**  
5.796 Panels



**AMOUNT OF GREENHOUSE GAS EMISSIONS AVOIDED**  
1.569.291 kg.



**DATE OF COMMISSIONING**  
15/02/2021





# ADANA

OĞUZ TEKSTİL 2 SPP

2.199 kWp



**PROJECT'S INSTALLED CAPACITY**  
AC: 1.821,60 kWe DC: 2.199,12 kWp



**ANNUAL ENERGY PRODUCTION**  
2.803.554 kWh



**TOTAL NUMBER OF HOUSEHOLD CONSUMPTION UNITS EQUAL TO THE CAPACITY**  
923 Households



**NUMBER OF PANELS USED**  
5.236 Panels



**AMOUNT OF GREENHOUSE GAS EMISSIONS AVOIDED**  
1.317.670 kg.



**DATE OF COMMISSIONING**  
12/01/2021



# KAHRAMANMARAŞ

ISKUR DENİM SPP

2.180 kWp



**PROJECT'S INSTALLED CAPACITY**  
AC: 2.000 kWe DC: 2.180,25 kWp



**ANNUAL ENERGY PRODUCTION**  
3.049.683 kWh



**TOTAL NUMBER OF HOUSEHOLD CONSUMPTION UNITS EQUAL TO THE CAPACITY**  
1.005 Households



**NUMBER OF PANELS USED**  
5.130 Panels



**AMOUNT OF GREENHOUSE GAS EMISSIONS AVOIDED**  
1.433.137 kg.



**DATE OF COMMISSIONING**  
07/01/2022



# GAZİANTEP

## FLAMENT SPP

### 2.140 kWp



**PROJECT'S INSTALLED CAPACITY**  
AC: 1.821,60 kWe DC: 2.140,32 kWp



**ANNUAL ENERGY PRODUCTION**  
3.362.998 kWh



**TOTAL NUMBER OF HOUSEHOLD CONSUMPTION UNITS EQUAL TO THE CAPACITY**  
1.108 Households



**NUMBER OF PANELS USED**  
5.096 Panels



**AMOUNT OF GREENHOUSE GAS EMISSIONS AVOIDED**  
1.580.609 kg.



**DATE OF COMMISSIONING**  
28/12/2020



# ADANA

## ERBEY DOKUMA SPP

### 2.078 kWp



**PROJECT'S INSTALLED CAPACITY**  
AC: 1.656 kWe DC: 2.078,40 kWp



**ANNUAL ENERGY PRODUCTION**  
2.664.587 kWh



**TOTAL NUMBER OF HOUSEHOLD CONSUMPTION UNITS EQUAL TO THE CAPACITY**  
878 Households



**NUMBER OF PANELS USED**  
5.196 Panels



**AMOUNT OF GREENHOUSE GAS EMISSIONS AVOIDED**  
1.252.356 kg.



**DATE OF COMMISSIONING**  
02/11/2020



# GAZİANTEP

İKRA GIDA SPP

1.758 kWp

ikra



## PROJECT'S INSTALLED CAPACITY

AC: 1.380 kWe DC: 1.758,40 kWp



## ANNUAL ENERGY PRODUCTION

2.665.684 kWh



## TOTAL NUMBER OF HOUSEHOLD CONSUMPTION UNITS EQUAL TO THE CAPACITY

878 Households



## NUMBER OF PANELS USED

4.396 Panels



## AMOUNT OF GREENHOUSE GAS EMISSIONS AVOIDED

1.252.872 kg.



## DATE OF COMMISSIONING

22/01/2021



# ADANA

ABDİOĞULLARI PLASTİK 2 SPP

1.746 kWp



ABDİOĞULLARI  
PLASTİK VE AMBALAJ SANAYİ A.Ş.



## PROJECT'S INSTALLED CAPACITY

AC: 1.490,40 kWe DC: 1.746,36 kWp



## ANNUAL ENERGY PRODUCTION

2.060.353 kWh



## TOTAL NUMBER OF HOUSEHOLD CONSUMPTION UNITS EQUAL TO THE CAPACITY

679 Households



## NUMBER OF PANELS USED

4.536 Panels



## AMOUNT OF GREENHOUSE GAS EMISSIONS AVOIDED

1.236.212 kg.



## DATE OF COMMISSIONING

22/06/2020



# DİYARBAKIR

## İSKUR İPLİK SPP

### 1.714 kWp



**PROJECT'S INSTALLED CAPACITY**  
AC: 1.400 kWe DC: 1.713,60 kWp



**ANNUAL ENERGY PRODUCTION**  
2.167.207 kWh



**TOTAL NUMBER OF HOUSEHOLD CONSUMPTION UNITS EQUAL TO THE CAPACITY**  
714 Households



**NUMBER OF PANELS USED**  
4.032 Panels



**AMOUNT OF GREENHOUSE GAS EMISSIONS AVOIDED**  
1.018.434 kg.



**DATE OF COMMISSIONING**  
10/01/2022



# ADANA

## OĞUZ GIDA STARKON SPP

### 1.627 kWp



**PROJECT'S INSTALLED CAPACITY**  
AC: 1.200 kWe DC: 1.627,20 kWp



**ANNUAL ENERGY PRODUCTION**  
1.891.614 kWh



**TOTAL NUMBER OF HOUSEHOLD CONSUMPTION UNITS EQUAL TO THE CAPACITY**  
623 Households



**NUMBER OF PANELS USED**  
4.068 Panels



**AMOUNT OF GREENHOUSE GAS EMISSIONS AVOIDED**  
88.935 kg.



**DATE OF COMMISSIONING**  
1/11/2021



# MERSİN

SEÇİL KAUÇUK 2 SPP  
1.450 kWp



**PROJECT'S INSTALLED CAPACITY**  
AC: 1.200 kWe DC: 1.449,81 kWp



**ANNUAL ENERGY PRODUCTION**  
1.813.138 kWh



**TOTAL NUMBER OF HOUSEHOLD CONSUMPTION UNITS EQUAL TO THE CAPACITY**  
597 Households



**NUMBER OF PANELS USED**  
3.258 Panels



**AMOUNT OF GREENHOUSE GAS EMISSIONS AVOIDED**  
852.041 kg.



**DATE OF COMMISSIONING**  
18/11/2021



# ADANA

OĞUZ TEKSTİL 1 SPP  
2.278 kWp



**PROJECT'S INSTALLED CAPACITY**  
AC: 1.100 kWe DC: 1.411,20 kWp



**ANNUAL ENERGY PRODUCTION**  
1.799.260 kWh



**TOTAL NUMBER OF HOUSEHOLD CONSUMPTION UNITS EQUAL TO THE CAPACITY**  
593 Households



**NUMBER OF PANELS USED**  
3.360 Panels



**AMOUNT OF GREENHOUSE GAS EMISSIONS AVOIDED**  
845.652 kg.



**DATE OF COMMISSIONING**  
15/02/2021



# GAZİANTEP

## DURMAZ ÇELİK SPP

### 1.411 kWp

DURMAZ  
ÇELİK



**PROJECT'S INSTALLED CAPACITY**  
AC: 1.118 kWe DC: 1.411 kWp



**ANNUAL ENERGY PRODUCTION**  
2.171.247 kWh



**TOTAL NUMBER OF HOUSEHOLD CONSUMPTION UNITS EQUAL TO THE CAPACITY**  
715 Households



**NUMBER OF PANELS USED**  
3.528 Panels



**AMOUNT OF GREENHOUSE GAS EMISSIONS AVOIDED**  
1.020.486 kg.



**DATE OF COMMISSIONING**  
05/05/2021



# NIĞDE

## AKMİNA MAKİNE TEKSTİL SPP

### 1.333 kWp

akmina



**PROJECT'S INSTALLED CAPACITY**  
AC: 1.076,40 kWe DC: 1.332,80 kWp



**ANNUAL ENERGY PRODUCTION**  
2.096.394 kWh



**TOTAL NUMBER OF HOUSEHOLD CONSUMPTION UNITS EQUAL TO THE CAPACITY**  
691 Households



**NUMBER OF PANELS USED**  
3.332 Panels



**AMOUNT OF GREENHOUSE GAS EMISSIONS AVOIDED**  
985.305 kg.



**DATE OF COMMISSIONING**  
09/12/2020



# MERSİN

## MESKİ 2 SPP

### 1.303 kWp



**PROJECT'S INSTALLED CAPACITY**  
AC: 1.200 kWe DC: 1.302,80 kWp



**ANNUAL ENERGY PRODUCTION**  
1.745.109 kWh



**TOTAL NUMBER OF HOUSEHOLD CONSUMPTION UNITS EQUAL TO THE CAPACITY**  
575 Households



**NUMBER OF PANELS USED**  
3.257 Panels



**AMOUNT OF GREENHOUSE GAS EMISSIONS AVOIDED**  
820.075 kg.



**DATE OF COMMISSIONING**  
17/12/2021



# ADANA

## ADAWALL SPP

### 1.277 kWp



**PROJECT'S INSTALLED CAPACITY**  
AC: 1.104 kWe DC: 1.276,80 kWp



**ANNUAL ENERGY PRODUCTION**  
1.556.408 kWh



**TOTAL NUMBER OF HOUSEHOLD CONSUMPTION UNITS EQUAL TO THE CAPACITY**  
513 Households



**NUMBER OF PANELS USED**  
3.192 Panels



**AMOUNT OF GREENHOUSE GAS EMISSIONS AVOIDED**  
731.512 kg.



**DATE OF COMMISSIONING**  
26/02/2021



# KAYSERİ

MİLKAY TEKNİK TEKSTİL (AKELYAF) SPP

1.266 kWp



**PROJECT'S INSTALLED CAPACITY**  
AC: 1.048,80 kWe DC: 1.265,60 kWp



**ANNUAL ENERGY PRODUCTION**  
1.806.665 kWh



**TOTAL NUMBER OF HOUSEHOLD CONSUMPTION UNITS EQUAL TO THE CAPACITY**  
595 Households



**NUMBER OF PANELS USED**  
3.164 Panels



**AMOUNT OF GREENHOUSE GAS EMISSIONS AVOIDED**  
849.132 kg.



**DATE OF COMMISSIONING**  
13/11/2020



# ADANA

ABDİOĞULLARI PLASTİK 7 SPP

1.261 kWp



**ABDİOĞULLARI**  
PLASTİK VE AMBALAJ SANAYİ A.Ş.



**PROJECT'S INSTALLED CAPACITY**  
AC: 1.076,40 kWe DC: 1.261,26 kWp



**ANNUAL ENERGY PRODUCTION**  
1.483.116 kWh



**TOTAL NUMBER OF HOUSEHOLD CONSUMPTION UNITS EQUAL TO THE CAPACITY**  
489 Households



**NUMBER OF PANELS USED**  
3.276 Panels



**AMOUNT OF GREENHOUSE GAS EMISSIONS AVOIDED**  
889.870 kg.



**DATE OF COMMISSIONING**  
29/07/2020





# KAHRAMANMARAŞ

## RİMSA TEKSTİL SPP

### 1.250 kWp

RİMSA  
Denimaxx  
M-BLUE



**PROJECT'S INSTALLED CAPACITY**  
AC: 1.104 kWe DC: 1.250,48 kWp



**ANNUAL ENERGY PRODUCTION**  
1.765.742 kWh



**TOTAL NUMBER OF HOUSEHOLD CONSUMPTION UNITS EQUAL TO THE CAPACITY**  
582 Households



**NUMBER OF PANELS USED**  
3.248 Panels



**AMOUNT OF GREENHOUSE GAS EMISSIONS AVOIDED**  
1.059.445 kg.



**DATE OF COMMISSIONING**  
11/08/2020



# BURSA

## İŞIKSOY TEKSTİL SPP

### 1.167 kWp

İŞIKSOY



**PROJECT'S INSTALLED CAPACITY**  
AC: 993,60 kWe DC: 1.166,98 kWp



**ANNUAL ENERGY PRODUCTION**  
1.329.575 kWh



**TOTAL NUMBER OF HOUSEHOLD CONSUMPTION UNITS EQUAL TO THE CAPACITY**  
438 Households



**NUMBER OF PANELS USED**  
2.812 Panels



**AMOUNT OF GREENHOUSE GAS EMISSIONS AVOIDED**  
624.602 kg.



**DATE OF COMMISSIONING**  
26/11/2021



# ADANA

ABDİOĞULLARI PLASTİK 1 SPP

1.164 kWp

**ABDİOĞULLARI**  
PLASTİK VE AMBALAJ SANAYİ A.Ş.



**PROJECT'S INSTALLED CAPACITY**  
AC: 993,60 kWe DC: 1.164,24 kWp



**ANNUAL ENERGY PRODUCTION**  
1.384.644 kWh



**TOTAL NUMBER OF HOUSEHOLD CONSUMPTION UNITS EQUAL TO THE CAPACITY**  
456 Households



**NUMBER OF PANELS USED**  
3.024 Panels



**AMOUNT OF GREENHOUSE GAS EMISSIONS AVOIDED**  
830.787 kg.



**DATE OF COMMISSIONING**  
29/07/2020



# DENİZLİ

YONGA MOBİLYA SPP

1.133 kWp

**YONGA®**



**PROJECT'S INSTALLED CAPACITY**  
AC: 840 kWe DC: 1.133,44 kWp



**ANNUAL ENERGY PRODUCTION**  
1.501.929 kWh



**TOTAL NUMBER OF HOUSEHOLD CONSUMPTION UNITS EQUAL TO THE CAPACITY**  
495 Households



**NUMBER OF PANELS USED**  
2.576 Panels



**AMOUNT OF GREENHOUSE GAS EMISSIONS AVOIDED**  
705.652 kg.



**DATE OF COMMISSIONING**  
27/12/2021



# MERSİN

## TÜMEN TARIM SPP

### 1.042 kWp



**PROJECT'S INSTALLED CAPACITY**  
AC: 855,60 kWe DC: 1.041,60 kWp



**ANNUAL ENERGY PRODUCTION**  
1.365.934 kWh



**TOTAL NUMBER OF HOUSEHOLD CONSUMPTION UNITS EQUAL TO THE CAPACITY**  
450 Households



**NUMBER OF PANELS USED**  
2.604 Panels



**AMOUNT OF GREENHOUSE GAS EMISSIONS AVOIDED**  
819.560 kg.



**DATE OF COMMISSIONING**  
11/01/2021



# MERSİN

## SEÇİL KAUÇUK 1 SPP

### 969 kWp



**PROJECT'S INSTALLED CAPACITY**  
AC: 700 kWe DC: 969,21 kWp



**ANNUAL ENERGY PRODUCTION**  
1.249.561 kWh



**TOTAL NUMBER OF HOUSEHOLD CONSUMPTION UNITS EQUAL TO THE CAPACITY**  
412 Households



**NUMBER OF PANELS USED**  
2.178 Panels



**AMOUNT OF GREENHOUSE GAS EMISSIONS AVOIDED**  
587.216 kg.



**DATE OF COMMISSIONING**  
18/11/2021



# UŞAK

BEPA GERİ DÖNÜŞÜM SPP

842 kWp



#### PROJECT'S INSTALLED CAPACITY

AC: 640 kWe DC: 842,40 kWp



#### ANNUAL ENERGY PRODUCTION

1.1128.106 kWh



#### TOTAL NUMBER OF HOUSEHOLD CONSUMPTION UNITS EQUAL TO THE CAPACITY

372 Households



#### NUMBER OF PANELS USED

1.872 Panels



#### AMOUNT OF GREENHOUSE GAS EMISSIONS AVOIDED

530.147 kg.



#### DATE OF COMMISSIONING

25/02/2022



# MERSİN

MESKİ 3 SPP

838 kWp



T.C. MERSİN BÜYÜKŞEHİR KALDIRYIŞI



#### PROJECT'S INSTALLED CAPACITY

AC: 756 kWe DC: 838 kWp



#### ANNUAL ENERGY PRODUCTION

1.110.896 kWh



#### TOTAL NUMBER OF HOUSEHOLD CONSUMPTION UNITS EQUAL TO THE CAPACITY

366 Households



#### NUMBER OF PANELS USED

2.095 Panels



#### AMOUNT OF GREENHOUSE GAS EMISSIONS AVOIDED

522.038 kg.



#### DATE OF COMMISSIONING

07/12/2021



# MUĞLA

## GÜLPÖRT SPP

### 797 kWp



**PROJECT'S INSTALLED CAPACITY**  
AC: 600 kWe DC: 797,44 kWp



**ANNUAL ENERGY PRODUCTION**  
1.269.000 kWh



**TOTAL NUMBER OF HOUSEHOLD CONSUMPTION UNITS EQUAL TO THE CAPACITY**  
418 Households



**NUMBER OF PANELS USED**  
1.792 Panels



**AMOUNT OF GREENHOUSE GAS EMISSIONS AVOIDED**  
596.154 kg.



**DATE OF COMMISSIONING**  
02/03/2022

# MERSİN

## MESKİ 1 SPP

### 680 kWp



**PROJECT'S INSTALLED CAPACITY**  
AC: 550 kWe DC: 680 kWp



**ANNUAL ENERGY PRODUCTION**  
917.405 kWh



**TOTAL NUMBER OF HOUSEHOLD CONSUMPTION UNITS EQUAL TO THE CAPACITY**  
302 Households



**NUMBER OF PANELS USED**  
1.700 Panels



**AMOUNT OF GREENHOUSE GAS EMISSIONS AVOIDED**  
424.103 kg.



**DATE OF COMMISSIONING**  
02/11/2021

# TEKİRDAĞ

## RAN TEKSTİL SPP

### 589 kWp



**PROJECT'S INSTALLED CAPACITY**  
AC: 579,60 kW<sub>e</sub> DC: 588,80 kW<sub>p</sub>



**ANNUAL ENERGY PRODUCTION**  
611.132 kWh



**TOTAL NUMBER OF HOUSEHOLD CONSUMPTION UNITS EQUAL TO THE CAPACITY**  
201 Households



**NUMBER OF PANELS USED**  
1.472 Panels



**AMOUNT OF GREENHOUSE GAS EMISSIONS AVOIDED**  
287.061 kg.



**DATE OF COMMISSIONING**  
25/03/2022



# BURSA

## İŞIKSOY TEKSTİL TEKSTÜRİZE SPP

### 558 kWp



**PROJECT'S INSTALLED CAPACITY**  
AC: 441,60 kW<sub>e</sub> DC: 557,80 kW<sub>p</sub>



**ANNUAL ENERGY PRODUCTION**  
648.117 kWh



**TOTAL NUMBER OF HOUSEHOLD CONSUMPTION UNITS EQUAL TO THE CAPACITY**  
213 Households



**NUMBER OF PANELS USED**  
1.344 Panels



**AMOUNT OF GREENHOUSE GAS EMISSIONS AVOIDED**  
304.484 kg.



**DATE OF COMMISSIONING**  
07/01/2022



# BALIKESİR

## SAĞLAM METAL SPP

### 557 kWp

///SAGLAM///METAL///  
Metal Sağlamdır...



**PROJECT'S INSTALLED CAPACITY**  
AC: 441,60 kWe DC: 556,80 kWp



**ANNUAL ENERGY PRODUCTION**  
619.302 kWh



**TOTAL NUMBER OF HOUSEHOLD CONSUMPTION UNITS EQUAL TO THE CAPACITY**  
204 Households



**NUMBER OF PANELS USED**  
1.392 Panels



**AMOUNT OF GREENHOUSE GAS EMISSIONS AVOIDED**  
291.072 kg.



**DATE OF COMMISSIONING**  
25/11/2021



# İSTANBUL

## ESENYURT SPP

### 474 kWp



**PROJECT'S INSTALLED CAPACITY**  
AC: 386,40 kWe DC: 473,84 kWp



**ANNUAL ENERGY PRODUCTION**  
621.972 kWh



**TOTAL NUMBER OF HOUSEHOLD CONSUMPTION UNITS EQUAL TO THE CAPACITY**  
205 Households



**NUMBER OF PANELS USED**  
1.424 Panels



**AMOUNT OF GREENHOUSE GAS EMISSIONS AVOIDED**  
292.326 kg.



**DATE OF COMMISSIONING**  
15/01/2021



# ADANA

KÖSEOĞLU AGRO TARIM SPP

437 kWp

**KÖSEOĞLU AGRO**

Tarım Ürünleri Lisanslı Depoculuk A.Ş.



#### PROJECT'S INSTALLED CAPACITY

AC: 350 kW<sub>e</sub> DC: 436,80 kWp



#### ANNUAL ENERGY PRODUCTION

558.866 kWh



#### TOTAL NUMBER OF HOUSEHOLD CONSUMPTION UNITS EQUAL TO THE CAPACITY

184 Households



#### NUMBER OF PANELS USED

1.092 Panels



#### AMOUNT OF GREENHOUSE GAS EMISSIONS AVOIDED

335.320 kg.



#### DATE OF COMMISSIONING

23/09/2020



# ANKARA

OLİMPİYAT ISI SPP

404 kWp

**OLİMPİYAT**  
ISI VE MAKİNA SANAYİ



#### PROJECT'S INSTALLED CAPACITY

AC: 350 kW<sub>e</sub> DC: 404,25 kWp



#### ANNUAL ENERGY PRODUCTION

473.632 kWh



#### TOTAL NUMBER OF HOUSEHOLD CONSUMPTION UNITS EQUAL TO THE CAPACITY

156 Households



#### NUMBER OF PANELS USED

1.050 Panels



#### AMOUNT OF GREENHOUSE GAS EMISSIONS AVOIDED

222.607 kg.



#### DATE OF COMMISSIONING

24/07/2020





# KAHRAMANMARAŞ

## ING BANK SPP

### 379 kWp



**PROJECT'S INSTALLED CAPACITY**  
AC: 360 kWe DC: 379,08 kWp



**ANNUAL ENERGY PRODUCTION**  
556.887 kWh



**TOTAL NUMBER OF HOUSEHOLD CONSUMPTION UNITS EQUAL TO THE CAPACITY**  
183 Households



**NUMBER OF PANELS USED**  
972 Panels



**AMOUNT OF GREENHOUSE GAS EMISSIONS AVOIDED**  
261.737 kg.



**DATE OF COMMISSIONING**  
25/01/2021



# KONYA

## ŞEVKET ÖZLÜ TARIM SPP

### 295 kWp



**PROJECT'S INSTALLED CAPACITY**  
AC: 240 kWe DC: 295,20 kWp



**ANNUAL ENERGY PRODUCTION**  
517.221 kWh



**TOTAL NUMBER OF HOUSEHOLD CONSUMPTION UNITS EQUAL TO THE CAPACITY**  
170 Households



**NUMBER OF PANELS USED**  
738 Panels



**AMOUNT OF GREENHOUSE GAS EMISSIONS AVOIDED**  
243.089 kg.



**DATE OF COMMISSIONING**  
04/03/2021



# ADANA

## VERİ MERKEZİ SPP

### 250 kWp



#### PROJECT'S INSTALLED CAPACITY

AC: 220,80 kWe DC: 249,60 kWp



#### ANNUAL ENERGY PRODUCTION

381.184 kWh



#### TOTAL NUMBER OF HOUSEHOLD CONSUMPTION UNITS EQUAL TO THE CAPACITY

110 Households



#### NUMBER OF PANELS USED

780 Panels



#### AMOUNT OF GREENHOUSE GAS EMISSIONS AVOIDED

228.710 kg.



#### DATE OF COMMISSIONING

23/08/2019



# ADANA

## ATLAS FİDE SPP

### 205 kWp



#### PROJECT'S INSTALLED CAPACITY

AC: 165,60 kWe DC: 204,80 kWp



#### ANNUAL ENERGY PRODUCTION

265.820 kWh



#### TOTAL NUMBER OF HOUSEHOLD CONSUMPTION UNITS EQUAL TO THE CAPACITY

88 Households



#### NUMBER OF PANELS USED

640 Panels



#### AMOUNT OF GREENHOUSE GAS EMISSIONS AVOIDED

159.492 kg.



#### DATE OF COMMISSIONING

25/09/2020



# KOCAELİ

COLGATE PALMOLIVE SPP

101 kWp



## PROJECT'S INSTALLED CAPACITY

AC: 82,80 kWe DC: 100,80 kWp



## ANNUAL ENERGY PRODUCTION

111.197 kWh



## TOTAL NUMBER OF HOUSEHOLD CONSUMPTION UNITS EQUAL TO THE CAPACITY

37 Households



## NUMBER OF PANELS USED

252 Panels



## AMOUNT OF GREENHOUSE GAS EMISSIONS AVOIDED

66.718 kg.



## DATE OF COMMISSIONING

12/01/2021



# KONYA

KAMER KOLEJİ SPP

77 kWp



## PROJECT'S INSTALLED CAPACITY

AC: 63 kWe DC: 76,50 kWp



## ANNUAL ENERGY PRODUCTION

113.987 kWh



## TOTAL NUMBER OF HOUSEHOLD CONSUMPTION UNITS EQUAL TO THE CAPACITY

38 Households



## NUMBER OF PANELS USED

180 Panels



## AMOUNT OF GREENHOUSE GAS EMISSIONS AVOIDED

53.549 kg.



## DATE OF COMMISSIONING

05/01/2022



# ADANA

GÖKBORA LOJİSTİK SPP

72 kWp



## PROJECT'S INSTALLED CAPACITY

AC: 60 kWe DC: 72 kWp



## ANNUAL ENERGY PRODUCTION

88.250 kWh



## TOTAL NUMBER OF HOUSEHOLD CONSUMPTION UNITS EQUAL TO THE CAPACITY

29 Households



## NUMBER OF PANELS USED

180 Panels



## AMOUNT OF GREENHOUSE GAS EMISSIONS AVOIDED

41.477 kg.



## DATE OF COMMISSIONING

12/08/2021



# ADANA

TEKFEN İNŞAAT SPP

47 kWp



TEKFEN İNŞAAT



## PROJECT'S INSTALLED CAPACITY

AC: 42,60 kWe DC: 47,04 kWp



## ANNUAL ENERGY PRODUCTION

75.941 kWh



## TOTAL NUMBER OF HOUSEHOLD CONSUMPTION UNITS EQUAL TO THE CAPACITY

25 Households



## NUMBER OF PANELS USED

147 Panels



## AMOUNT OF GREENHOUSE GAS EMISSIONS AVOIDED

45.565 kg.



## DATE OF COMMISSIONING

03/07/2020



# İSTANBUL

EKSİM YATIRIM HOLDİNG SPP

41 kWp

**EKSİM**  
YATIRIM HOLDİNG



**PROJECT'S INSTALLED CAPACITY**  
AC: 47,60 kWe DC: 41,16 kWp



**ANNUAL ENERGY PRODUCTION**  
49.437 kWh



**TOTAL NUMBER OF HOUSEHOLD CONSUMPTION UNITS EQUAL TO THE CAPACITY**  
16 Households



**NUMBER OF PANELS USED**  
98 Panels



**AMOUNT OF GREENHOUSE GAS EMISSIONS AVOIDED**  
23.235 kg.



**DATE OF COMMISSIONING**  
25/02/2021



# İSTANBUL

BOYBO TEKSTİL SPP

40 kWp

**BO GROUP**



**PROJECT'S INSTALLED CAPACITY**  
AC: 40 kWe DC: 40 kWp



**ANNUAL ENERGY PRODUCTION**  
53.696 kWh



**TOTAL NUMBER OF HOUSEHOLD CONSUMPTION UNITS EQUAL TO THE CAPACITY**  
18 Households



**NUMBER OF PANELS USED**  
100 Panels



**AMOUNT OF GREENHOUSE GAS EMISSIONS AVOIDED**  
25.221 kg.



**DATE OF COMMISSIONING**  
25/03/2022



# KÜTAHYA

NG KÜTAHYA SERAMİK SPP

**3.987 kWp**

NG | KÜTAHYA  
SERAMİK



**PROJECT'S INSTALLED CAPACITY**  
AC: 3.066 kWe DC: 3.987 kWp



**ANNUAL ENERGY PRODUCTION**  
5.436.700 kWh



**TOTAL NUMBER OF HOUSEHOLD CONSUMPTION UNITS EQUAL TO THE CAPACITY**  
1.791 Households



**NUMBER OF PANELS USED**  
9.372 Panels



**AMOUNT OF GREENHOUSE GAS EMISSIONS AVOIDED**  
2.555.249 kg.



**DATE OF COMMISSIONING**  
27/06/2022



# TEKİRDAĞ

AKEL SUNİ DERİ 1 SPP

**1.216 kWp**



**PROJECT'S INSTALLED CAPACITY**  
AC: 900,00 kWe DC: 1.216 kWp



**ANNUAL ENERGY PRODUCTION**  
1.230.215 kWh



**TOTAL NUMBER OF HOUSEHOLD CONSUMPTION UNITS EQUAL TO THE CAPACITY**  
405 Households



**NUMBER OF PANELS USED**  
2702 Panels



**AMOUNT OF GREENHOUSE GAS EMISSIONS AVOIDED**  
577.932 kg.



**DATE OF COMMISSIONING**  
30/08/2022



# UŞAK

## ÖZEĞE TEKSTİL SPP

### 2.476 kWp



**PROJECT'S INSTALLED CAPACITY**  
AC: 2.400 kWe DC: 2.476 kWp



**ANNUAL ENERGY PRODUCTION**  
3.341.934 kWh



**TOTAL NUMBER OF HOUSEHOLD CONSUMPTION UNITS EQUAL TO THE CAPACITY**

1.101 Households



**NUMBER OF PANELS USED**  
5.502 Panels



**AMOUNT OF GREENHOUSE GAS EMISSIONS AVOIDED**  
1.569.996 kg.



**DATE OF COMMISSIONING**  
31/05/2022



# KÜTAHYA

## BOLİŞ PLASTİK SPP

### 970 kWp



**PROJECT'S INSTALLED CAPACITY**  
AC: 800 kWe DC: 970 kWp



**ANNUAL ENERGY PRODUCTION**  
1.269.900 kWh



**TOTAL NUMBER OF HOUSEHOLD CONSUMPTION UNITS EQUAL TO THE CAPACITY**

418 Households



**NUMBER OF PANELS USED**  
2.282 Panels



**AMOUNT OF GREENHOUSE GAS EMISSIONS AVOIDED**  
596.853 kg.



**DATE OF COMMISSIONING**  
29/04/2022



# ANKARA

ASSAN GROUP SPP

**3.160 kWp**

**ASSAN**  
GROUP



**PROJECT'S INSTALLED CAPACITY**

AC: 2.400 kWe DC: 3.160 kWp



**ANNUAL ENERGY PRODUCTION**

4.321.000 kWh



**TOTAL NUMBER OF HOUSEHOLD CONSUMPTION UNITS EQUAL TO THE CAPACITY**

1.423 Households



**NUMBER OF PANELS USED**

6.946 Panels



**AMOUNT OF GREENHOUSE GAS EMISSIONS AVOIDED**

2.113.287 kg.



**DATE OF COMMISSIONING**

14/11/2022



# AYDIN

ABALIOĞLU BALIK SPP

**671 kWp**

**ABALIOĞLU**



**PROJECT'S INSTALLED CAPACITY**

AC: 560 kWe DC: 671 kWp



**ANNUAL ENERGY PRODUCTION**

985.000 kWh



**TOTAL NUMBER OF HOUSEHOLD CONSUMPTION UNITS EQUAL TO THE CAPACITY**

324 Households



**NUMBER OF PANELS USED**

1.508 Panels



**AMOUNT OF GREENHOUSE GAS EMISSIONS AVOIDED**

462.950 kg.



**DATE OF COMMISSIONING**

30/08/2022





# MUĞLA

## GÜLLÜK SPP

### 1.851 kWp



**PROJECT'S INSTALLED CAPACITY**  
AC: 1.435,20 kWe 1.851,20 kWp



**ANNUAL ENERGY PRODUCTION**  
2.763.300 kWh



**TOTAL NUMBER OF HOUSEHOLD CONSUMPTION UNITS EQUAL TO THE CAPACITY**  
910 Households



**NUMBER OF PANELS USED**  
4.160 Panels



**AMOUNT OF GREENHOUSE GAS EMISSIONS AVOIDED**  
1.298.151 kg.



**DATE OF COMMISSIONING**  
25/03/2022



# TEKİRDAĞ

## AKEL SUNİ DERİ 2 SPP

### 1.148 kWp



**PROJECT'S INSTALLED CAPACITY**  
AC: 960 kWe DC: 1.148 kWp



**ANNUAL ENERGY PRODUCTION**  
1.450.823 kWh



**TOTAL NUMBER OF HOUSEHOLD CONSUMPTION UNITS EQUAL TO THE CAPACITY**  
478 Households



**NUMBER OF PANELS USED**  
2.550 Panels



**AMOUNT OF GREENHOUSE GAS EMISSIONS AVOIDED**  
681.594 kg.



**DATE OF COMMISSIONING**  
30/08/2022



# KOCAELİ

MPS METAL SPP

1.253 kWp



Metal Plastik Sanayi



## PROJECT'S INSTALLED CAPACITY

AC: 1.000 kWe DC: 1.253 kWp



## ANNUAL ENERGY PRODUCTION

1.324.031 kWh



## TOTAL NUMBER OF HOUSEHOLD CONSUMPTION UNITS EQUAL TO THE CAPACITY

436 Households



## NUMBER OF PANELS USED

2.784 Panels



## AMOUNT OF GREENHOUSE GAS EMISSIONS AVOIDED

622.189 kg.



## DATE OF COMMISSIONING

30/08/2022



# TEKİRDAĞ

AKSA JENERATÖR SPP

867 kWp



## PROJECT'S INSTALLED CAPACITY

AC: 700 kWe DC: 867 kWp



## ANNUAL ENERGY PRODUCTION

933.200 kWh



## TOTAL NUMBER OF HOUSEHOLD CONSUMPTION UNITS EQUAL TO THE CAPACITY

307 Households



## NUMBER OF PANELS USED

2.088 Panels



## AMOUNT OF GREENHOUSE GAS EMISSIONS AVOIDED

466.603 kg.



## DATE OF COMMISSIONING

30/08/2022



# ADANA

ÇOKYAŞAR TEL SPP

1.557 kWp

**COKYASAR**  
TEL A.Ş



#### PROJECT'S INSTALLED CAPACITY

AC: 1.100 kWe DC: 1.557 kWp



#### ANNUAL ENERGY PRODUCTION

1.764.378 kWh



#### TOTAL NUMBER OF HOUSEHOLD CONSUMPTION UNITS EQUAL TO THE CAPACITY

581 Households



#### NUMBER OF PANELS USED

3.460 Panels



#### AMOUNT OF GREENHOUSE GAS EMISSIONS AVOIDED

829.145 kg.



#### DATE OF COMMISSIONING

30/08/2022



# MALATYA

MİRAM OTOMOTİV SPP

470 kWp

**Miram**



#### PROJECT'S INSTALLED CAPACITY

AC: 400 kWe DC: 470 kWp



#### ANNUAL ENERGY PRODUCTION

736.639 kWh



#### TOTAL NUMBER OF HOUSEHOLD CONSUMPTION UNITS EQUAL TO THE CAPACITY

243 Households



#### NUMBER OF PANELS USED

1.021 Panels



#### AMOUNT OF GREENHOUSE GAS EMISSIONS AVOIDED

346.177 kg.



#### DATE OF COMMISSIONING

31/10/2022



# GAZİANTEP

EKONET TEKSTİL SPP

4.550 kWp



## PROJECT'S INSTALLED CAPACITY

AC: 3.500 kWe DC: 4.550 kWp



## ANNUAL ENERGY PRODUCTION

6.952.899 kWh



## TOTAL NUMBER OF HOUSEHOLD CONSUMPTION UNITS EQUAL TO THE CAPACITY

2.290 Hane



## NUMBER OF PANELS USED

10.000 Panel



## AMOUNT OF GREENHOUSE GAS EMISSIONS AVOIDED

3.267.005 kg.



## DATE OF COMMISSIONING

25/01/2022



# BURSA

ERŞAT TEKSTİL 1 SPP

878 kWp

ERŞAT  
TEKSTİL



## PROJECT'S INSTALLED CAPACITY

AC: 667 kWe DC: 878 kWp



## ANNUAL ENERGY PRODUCTION

968.235 kWh



## TOTAL NUMBER OF HOUSEHOLD CONSUMPTION UNITS EQUAL TO THE CAPACITY

319 Hane



## NUMBER OF PANELS USED

1.930 Panel



## AMOUNT OF GREENHOUSE GAS EMISSIONS AVOIDED

454.907 kg.



## DATE OF COMMISSIONING

24/02/2023



# ANKARA

AKMERMER SPP

1.005 kWp

 **Akmermer boru**  
SİRAL KAYNAKLI ÇELİK BORU



**PROJECT'S INSTALLED CAPACITY**

AC: 720 kWe DC: 1.005 kWp



**ANNUAL ENERGY PRODUCTION**

1.199.600 kWh



**TOTAL NUMBER OF HOUSEHOLD CONSUMPTION UNITS EQUAL TO THE CAPACITY**

395 Hane



**NUMBER OF PANELS USED**

2.208 Panel



**AMOUNT OF GREENHOUSE GAS EMISSIONS AVOIDED**

563.729 kg.



**DATE OF COMMISSIONING**

14/11/2022



# MERSİN

BERDAN CİVATA 5 SPP

571 kWp

 **BERDAN**  
CİVATA & SOMUN



**PROJECT'S INSTALLED CAPACITY**

AC: 467 kWe DC: 571 kWp



**ANNUAL ENERGY PRODUCTION**

755.367 kWh



**TOTAL NUMBER OF HOUSEHOLD CONSUMPTION UNITS EQUAL TO THE CAPACITY**

249 Hane



**NUMBER OF PANELS USED**

1.254 Panel



**AMOUNT OF GREENHOUSE GAS EMISSIONS AVOIDED**

354.908 kg.



**DATE OF COMMISSIONING**

23/01/2023



# ADANA

ÇEKMEZ PLASTİK SPP

551 kWp



ÇEKMEZ PLASTİK®



**PROJECT'S INSTALLED CAPACITY**  
AC:400 kWe DC: 551 kWp



**ANNUAL ENERGY PRODUCTION**  
704.080 kWh



**TOTAL NUMBER OF HOUSEHOLD CONSUMPTION UNITS EQUAL TO THE CAPACITY**  
232 Hane



**NUMBER OF PANELS USED**  
1.185 Panel



**AMOUNT OF GREENHOUSE GAS EMISSIONS AVOIDED**  
330.874 kg.



**DATE OF COMMISSIONING**  
02/01/2023



# MERSİN

BERDAN CİVATA 6 SPP

358 kWp



BERDAN  
CIVATA & SOMUN



**PROJECT'S INSTALLED CAPACITY**  
AC: 267 kWe DC: 358 kWp



**ANNUAL ENERGY PRODUCTION**  
474.101 kWh



**TOTAL NUMBER OF HOUSEHOLD CONSUMPTION UNITS EQUAL TO THE CAPACITY**  
156 Hane



**NUMBER OF PANELS USED**  
786 Panel



**AMOUNT OF GREENHOUSE GAS EMISSIONS AVOIDED**  
222.762 kg.



**DATE OF COMMISSIONING**  
23/01/2023



# ŞANLIURFA

## ÉYVAN TEKSTİL SPP

### 1.814 kWp



**PROJECT'S INSTALLED CAPACITY**  
AC: 1.500 kWe DC: 1.814 kWp



**ANNUAL ENERGY PRODUCTION**  
2.626.243 kWh



**TOTAL NUMBER OF HOUSEHOLD CONSUMPTION UNITS EQUAL TO THE CAPACITY**  
865 Hane



**NUMBER OF PANELS USED**  
3.986 Panel



**AMOUNT OF GREENHOUSE GAS EMISSIONS AVOIDED**  
1.234.182 kg.



**DATE OF COMMISSIONING**  
15/02/2022



# BURSA

## ERŞAT TEKSTİL 2 SPP

### 1.776 kWp



**PROJECT'S INSTALLED CAPACITY**  
AC: 1.367 kWe DC: 1.776 kWp



**ANNUAL ENERGY PRODUCTION**  
1.980.118 kWh



**TOTAL NUMBER OF HOUSEHOLD CONSUMPTION UNITS EQUAL TO THE CAPACITY**  
652 Hane



**NUMBER OF PANELS USED**  
3.904 Panel



**AMOUNT OF GREENHOUSE GAS EMISSIONS AVOIDED**  
930.320 kg.



**DATE OF COMMISSIONING**  
20/02/2023



ERŞAT  
TEKSTİL

# KOCAELİ

BİZİM TOPTAN SPP

264 kWp



## PROJECT'S INSTALLED CAPACITY

AC: 221 kWe DC: 264 kWp



## ANNUAL ENERGY PRODUCTION

304.992 kWh



## TOTAL NUMBER OF HOUSEHOLD CONSUMPTION UNITS EQUAL TO THE CAPACITY

100 Hane



## NUMBER OF PANELS USED

640 Panel



## AMOUNT OF GREENHOUSE GAS EMISSIONS AVOIDED

134.280 kg.



## DATE OF COMMISSIONING

17/01/2022



# İSTANBUL

DENİZPEN PLASTİK SPP

1.231 kWp



## PROJECT'S INSTALLED CAPACITY

AC: 1.000 kWe DC: 1.231 kWp



## ANNUAL ENERGY PRODUCTION

1.502.280 kWh



## TOTAL NUMBER OF HOUSEHOLD CONSUMPTION UNITS EQUAL TO THE CAPACITY

495 Hane



## NUMBER OF PANELS USED

2.706 Panel



## AMOUNT OF GREENHOUSE GAS EMISSIONS AVOIDED

706.100 kg.



## DATE OF COMMISSIONING

24/02/2023





# UŞAK

## AY TEKSTİL SPP

### 1.149 kWp



**PROJECT'S INSTALLED CAPACITY**  
AC: 900 kWp DC: 1.149 kWp



**ANNUAL ENERGY PRODUCTION**  
1.644.569 kWh



**TOTAL NUMBER OF HOUSEHOLD CONSUMPTION UNITS EQUAL TO THE CAPACITY**

542 Hane



**NUMBER OF PANELS USED**  
2.526 Panel



**AMOUNT OF GREENHOUSE GAS EMISSIONS AVOIDED**  
772.726 kg.



**DATE OF COMMISSIONING**  
21/02/2023



# HATAY

## TARIK AMBALAJ SPP

### 497 kWp



**PROJECT'S INSTALLED CAPACITY**  
AC: 400 kWp DC: 497 kWp



**ANNUAL ENERGY PRODUCTION**  
710.488 kWh



**TOTAL NUMBER OF HOUSEHOLD CONSUMPTION UNITS EQUAL TO THE CAPACITY**

234 Hane



**NUMBER OF PANELS USED**  
1.092 Panel



**AMOUNT OF GREENHOUSE GAS EMISSIONS AVOIDED**  
333.831 kg.



**DATE OF COMMISSIONING**  
16/01/2022



# İZMİR

EGE POYRAZ CAM SPP

**320 kWp**

EgePoyrazCam



**PROJECT'S INSTALLED CAPACITY**  
AC: 260 kW<sub>e</sub> DC: 320 kW<sub>p</sub>



**ANNUAL ENERGY PRODUCTION**  
455.183 kWh



**TOTAL NUMBER OF HOUSEHOLD CONSUMPTION UNITS EQUAL TO THE CAPACITY**  
150 Hane



**NUMBER OF PANELS USED**  
704 Panel



**AMOUNT OF GREENHOUSE GAS EMISSIONS AVOIDED**  
213.910 kg.



**DATE OF COMMISSIONING**  
25/10/2022



# UŞAK

BEPA 2 SPP

**925 kWp**



**PROJECT'S INSTALLED CAPACITY**  
AC: 780 kW<sub>e</sub> DC: 925 kW<sub>p</sub>



**ANNUAL ENERGY PRODUCTION**  
1.260.889 kWh



**TOTAL NUMBER OF HOUSEHOLD CONSUMPTION UNITS EQUAL TO THE CAPACITY**  
415 Hane



**NUMBER OF PANELS USED**  
2.152 Panel



**AMOUNT OF GREENHOUSE GAS EMISSIONS AVOIDED**  
592.533 kg.



**DATE OF COMMISSIONING**  
25/10/2022



# KAYSERİ

ERCIYES FORM SÜNGER SPP

2.300 kWp

FORM  
SÜNGER



#### PROJECT'S INSTALLED CAPACITY

AC: 1.500 kWe DC: 2.300 kWp



#### ANNUAL ENERGY PRODUCTION

3.210.200 kWh



#### TOTAL NUMBER OF HOUSEHOLD CONSUMPTION UNITS EQUAL TO THE CAPACITY

1.057 Hane



#### NUMBER OF PANELS USED

5.056 Panel



#### AMOUNT OF GREENHOUSE GAS EMISSIONS AVOIDED

1.508.800 kg.



#### DATE OF COMMISSIONING

27/01/2022



# UŞAK

KUYUCAK BATTANIYE SPP

1.190 kWp

KUYUCAK



#### PROJECT'S INSTALLED CAPACITY

AC: 1.100 kWe DC: 1.190 kWp



#### ANNUAL ENERGY PRODUCTION

1.637.443 kWh



#### TOTAL NUMBER OF HOUSEHOLD CONSUMPTION UNITS EQUAL TO THE CAPACITY

539 Hane



#### NUMBER OF PANELS USED

2.616 Panel



#### AMOUNT OF GREENHOUSE GAS EMISSIONS AVOIDED

769.478 kg.



#### DATE OF COMMISSIONING

24/02/2023



# KAYSERİ

ERCIYES İSTİKBAL SPP

4.901 kWp

 **istikbal**



#### PROJECT'S INSTALLED CAPACITY

AC: 4.200 kWe DC: 4.901 kWp



#### ANNUAL ENERGY PRODUCTION

6.641.100 kWh



#### TOTAL NUMBER OF HOUSEHOLD CONSUMPTION UNITS EQUAL TO THE CAPACITY

2.187 Hane



#### NUMBER OF PANELS USED

8.992 Panel



#### AMOUNT OF GREENHOUSE GAS EMISSIONS AVOIDED

3.121.300 kg.



#### DATE OF COMMISSIONING

24/02/2023



# ANKARA

OSMANLI REKLAM SPP

1.105 kWp

 **OSMANLI**  
REKLAM



#### PROJECT'S INSTALLED CAPACITY

AC: 990 kWe DC: 1.105 kWp



#### ANNUAL ENERGY PRODUCTION

1.517.169 kWh



#### TOTAL NUMBER OF HOUSEHOLD CONSUMPTION UNITS EQUAL TO THE CAPACITY

500 Hane



#### NUMBER OF PANELS USED

2.570 Panel



#### AMOUNT OF GREENHOUSE GAS EMISSIONS AVOIDED

712.973 kg.



#### DATE OF COMMISSIONING

13/12/2022



# KAYSERİ

ERCIYES ELDA HALI SPP

4.473 kWp



#### PROJECT'S INSTALLED CAPACITY

AC: 3.000 kWe DC: 4.473 kWp



#### ANNUAL ENERGY PRODUCTION

5.974.800 kWh



#### TOTAL NUMBER OF HOUSEHOLD CONSUMPTION UNITS EQUAL TO THE CAPACITY

1.968 Hane



#### NUMBER OF PANELS USED

9.831 Panel



#### AMOUNT OF GREENHOUSE GAS EMISSIONS AVOIDED

2.808.200 kg.



#### DATE OF COMMISSIONING

30/12/2022



# OSMANİYE

BONİP TEKSTİL SPP

1.944 kWp



#### PROJECT'S INSTALLED CAPACITY

AC: 1.600 kWe DC: 1.944 kWp



#### ANNUAL ENERGY PRODUCTION

2.253.056 kWh



#### TOTAL NUMBER OF HOUSEHOLD CONSUMPTION UNITS EQUAL TO THE CAPACITY

742 Hane



#### NUMBER OF PANELS USED

3.888 Panel



#### AMOUNT OF GREENHOUSE GAS EMISSIONS AVOIDED

1.058.771 kg.



#### DATE OF COMMISSIONING

09/01/2023



# KAYSERİ

ERCIYES HES KABLO SPP

3.281 kWp



## PROJECT'S INSTALLED CAPACITY

AC: 2.500 kWe DC: 3.281 kWp



## ANNUAL ENERGY PRODUCTION

4.286.000 kWh



## TOTAL NUMBER OF HOUSEHOLD CONSUMPTION UNITS EQUAL TO THE CAPACITY

1.412 Hane



## NUMBER OF PANELS USED

7.210 Panel



## AMOUNT OF GREENHOUSE GAS EMISSIONS AVOIDED

2.014.420 kg.



## DATE OF COMMISSIONING

24/02/2023



# DÜZCE

ÇOKYAŞAR HALAT SPP

1.253 kWp



## PROJECT'S INSTALLED CAPACITY

AC: 990 kWe DC: 1.253 kWp



## ANNUAL ENERGY PRODUCTION

1.500.170 kWh



## TOTAL NUMBER OF HOUSEHOLD CONSUMPTION UNITS EQUAL TO THE CAPACITY

494 Hane



## NUMBER OF PANELS USED

2.754 Panel



## AMOUNT OF GREENHOUSE GAS EMISSIONS AVOIDED

704.986 kg.



## DATE OF COMMISSIONING

24/02/2023



# MALATYA

## BİR DAMLA SPP

### 301 kWp



**PROJECT'S INSTALLED CAPACITY**  
AC: 240 kWe DC: 301 kWp



**ANNUAL ENERGY PRODUCTION**  
587.110 kWh



**TOTAL NUMBER OF HOUSEHOLD CONSUMPTION UNITS EQUAL TO THE CAPACITY**  
193 Hane



**NUMBER OF PANELS USED**  
714 Panel



**AMOUNT OF GREENHOUSE GAS EMISSIONS AVOIDED**  
275.900 kg.



**DATE OF COMMISSIONING**  
30/12/2022



# ANTALYA

## TOPUZ İMALAT SPP

### 285 kWp



**PROJECT'S INSTALLED CAPACITY**  
AC: 270 kWe DC: 285 kWp



**ANNUAL ENERGY PRODUCTION**  
381.234 kWh



**TOTAL NUMBER OF HOUSEHOLD CONSUMPTION UNITS EQUAL TO THE CAPACITY**  
126 Hane



**NUMBER OF PANELS USED**  
612 Panel



**AMOUNT OF GREENHOUSE GAS EMISSIONS AVOIDED**  
179.148 kg.



**DATE OF COMMISSIONING**  
24/02/2023



# UŞAK

## PAK PAMUK SPP

### 608 kWp



**PROJECT'S INSTALLED CAPACITY**  
AC: 500 kWe DC: 608 kWp



**ANNUAL ENERGY PRODUCTION**  
813.215 kWh



**TOTAL NUMBER OF HOUSEHOLD CONSUMPTION UNITS EQUAL TO THE CAPACITY**  
268 Hane



**NUMBER OF PANELS USED**  
1.350 Panel



**AMOUNT OF GREENHOUSE GAS EMISSIONS AVOIDED**  
382.211 kg.



**DATE OF COMMISSIONING**  
29/11/2022









# LAND-BASED PROJECTS





# BITLİS

ADİLCEVAZ - ALAGES SPP

## 24.193 kWp



**PROJECT'S INSTALLED CAPACITY**  
AC: 16.000 kWe DC: 24.192,80 kWp



**NUMBER OF PANELS USED**  
58.296 Panels



**ANNUAL ENERGY PRODUCTION**  
36.425.000 kWh



**AMOUNT OF GREENHOUSE GAS EMISSIONS AVOIDED**  
21.855.000 kg.



**TOTAL NUMBER OF HOUSEHOLD CONSUMPTION UNITS EQUAL TO THE CAPACITY**  
11.998 Households



**DATE OF COMMISSIONING**  
31/12/2020

# VAN

## BAŞKALE SPP

### 13.701 kWp



**PROJECT'S INSTALLED CAPACITY**  
AC: 11.682 kWe DC: 13.700,70 kWp



**ANNUAL ENERGY PRODUCTION**  
22.599.000 kWh



**TOTAL NUMBER OF HOUSEHOLD CONSUMPTION UNITS EQUAL TO THE CAPACITY**  
7.444 Households



**NUMBER OF PANELS USED**  
42.156 Panels



**AMOUNT OF GREENHOUSE GAS EMISSIONS AVOIDED**  
13.559.400 kg.



**DATE OF COMMISSIONING**  
10/12/2019



# DİYARBAKIR

## KESENTAŞ SPP

### 12.415 kWp



**PROJECT'S INSTALLED CAPACITY**  
AC: 10.690 kWe DC: 12.414,60 kWp



**ANNUAL ENERGY PRODUCTION**  
17.713.000 kWh



**TOTAL NUMBER OF HOUSEHOLD CONSUMPTION UNITS EQUAL TO THE CAPACITY**  
5.834 Households



**NUMBER OF PANELS USED**  
43.560 Panels



**AMOUNT OF GREENHOUSE GAS EMISSIONS AVOIDED**  
10.627.800 kg.



**DATE OF COMMISSIONING**  
29/03/2019



# ERZURUM

AŐKALE SPP

8.467 kWp



## PROJECT'S INSTALLED CAPACITY

AC: 5.880 kWe DC: 8.467,20 kWp



## ANNUAL ENERGY PRODUCTION

12.301.000 kWh



## TOTAL NUMBER OF HOUSEHOLD CONSUMPTION UNITS EQUAL TO THE CAPACITY

4.052 Households



## NUMBER OF PANELS USED

21.168 Panels



## AMOUNT OF GREENHOUSE GAS EMISSIONS AVOIDED

7.380.600 kg.



## DATE OF COMMISSIONING

31/01/2022



# AĐRI

SUŐATAĐI SPP

7.020 kWp



## PROJECT'S INSTALLED CAPACITY

AC: 5.940 kWe DC: 7.020 kWp



## ANNUAL ENERGY PRODUCTION

10.728.000 kWh



## TOTAL NUMBER OF HOUSEHOLD CONSUMPTION UNITS EQUAL TO THE CAPACITY

3.534 Households



## NUMBER OF PANELS USED

21.600 Panels



## AMOUNT OF GREENHOUSE GAS EMISSIONS AVOIDED

6.436.800 kg.



## DATE OF COMMISSIONING

17/02/2020



# YOZGAT

## SARAYKÖY SPP

### 6.415 kWp



**PROJECT'S INSTALLED CAPACITY**  
AC: 5.760 kWe DC: 6.415,20 kWp



**ANNUAL ENERGY PRODUCTION**  
10.395.000 kWh



**TOTAL NUMBER OF HOUSEHOLD CONSUMPTION UNITS EQUAL TO THE CAPACITY**  
3.424 Households



**NUMBER OF PANELS USED**  
23.760 Panels



**AMOUNT OF GREENHOUSE GAS EMISSIONS AVOIDED**  
6.237.000 kg.



**DATE OF COMMISSIONING**  
30/03/2018



# OSMANIYE

## DÜZİÇİ SPP

### 5.799 kWp



**PROJECT'S INSTALLED CAPACITY**  
AC: 4.938 kWe DC: 5.799 kWp



**ANNUAL ENERGY PRODUCTION**  
9.219.000 kWh



**TOTAL NUMBER OF HOUSEHOLD CONSUMPTION UNITS EQUAL TO THE CAPACITY**  
3.037 Households



**NUMBER OF PANELS USED**  
15.465 Panels



**AMOUNT OF GREENHOUSE GAS EMISSIONS AVOIDED**  
5.531.400 kg.



**DATE OF COMMISSIONING**  
18/11/2019



# OSMANIYE

## YAVERIYE SPP

### 5.789 kWp



#### PROJECT'S INSTALLED CAPACITY

AC: 4.845 kWe DC: 5.788,65 kWp



#### ANNUAL ENERGY PRODUCTION

8.533.000 kWh



#### TOTAL NUMBER OF HOUSEHOLD CONSUMPTION UNITS EQUAL TO THE CAPACITY

2.811 Households



#### NUMBER OF PANELS USED

15.645 Panels



#### AMOUNT OF GREENHOUSE GAS EMISSIONS AVOIDED

5.119.920 kg.



#### DATE OF COMMISSIONING

18/11/2019



# KONYA

## KULU DOĞUTEPE SPP

### 4.722 kWp



#### PROJECT'S INSTALLED CAPACITY

AC: 4.450 kWe DC: 4.722,30 kWp



#### ANNUAL ENERGY PRODUCTION

7.215.900 kWh



#### TOTAL NUMBER OF HOUSEHOLD CONSUMPTION UNITS EQUAL TO THE CAPACITY

2.377 Households



#### NUMBER OF PANELS USED

17.820 Panels



#### AMOUNT OF GREENHOUSE GAS EMISSIONS AVOIDED

4.329.540 kg.



#### DATE OF COMMISSIONING

25/08/2017





# ADANA

## BURUK SPP

**3.984 kWp**



### PROJECT'S INSTALLED CAPACITY

AC: 3.400 kWe DC: 3.984 kWp



### ANNUAL ENERGY PRODUCTION

5.732.000 kWh



### TOTAL NUMBER OF HOUSEHOLD CONSUMPTION UNITS EQUAL TO THE CAPACITY

1.888 Households



### NUMBER OF PANELS USED

10.624 Panels



### AMOUNT OF GREENHOUSE GAS EMISSIONS AVOIDED

3.439.200 kg.



### DATE OF COMMISSIONING

18/11/2019



# İZMİR

## DEREKÖY SPP

**3.533 kWp**



### PROJECT'S INSTALLED CAPACITY

AC: 3.000 kWe DC: 3.532,80 kWp



### ANNUAL ENERGY PRODUCTION

6.206.400 kWh



### TOTAL NUMBER OF HOUSEHOLD CONSUMPTION UNITS EQUAL TO THE CAPACITY

2.044 Households



### NUMBER OF PANELS USED

8.832 Panels



### AMOUNT OF GREENHOUSE GAS EMISSIONS AVOIDED

3.723.840 kg.



### DATE OF COMMISSIONING

31/12/2020



# İZMİR

## KİRAZ SPP

### 2.218 kWp



**PROJECT'S INSTALLED CAPACITY**  
AC: 1.980 kWe DC: 2.217,60 kWp



**ANNUAL ENERGY PRODUCTION**  
3.780.400 kWh



**TOTAL NUMBER OF HOUSEHOLD CONSUMPTION UNITS EQUAL TO THE CAPACITY**  
1.245 Households



**NUMBER OF PANELS USED**  
7.920 Panels



**AMOUNT OF GREENHOUSE GAS EMISSIONS AVOIDED**  
2.268.240 kg.



**DATE OF COMMISSIONING**  
20/12/2018



# İZMİR

## BAĞARASI SPP

### 2.138 kWp



**PROJECT'S INSTALLED CAPACITY**  
AC: 1.998 kWe DC: 2.138,40 kWp



**ANNUAL ENERGY PRODUCTION**  
3.443.900 kWh



**TOTAL NUMBER OF HOUSEHOLD CONSUMPTION UNITS EQUAL TO THE CAPACITY**  
1.134 Households



**NUMBER OF PANELS USED**  
7.920 Panels



**AMOUNT OF GREENHOUSE GAS EMISSIONS AVOIDED**  
2.066.340 kg.



**DATE OF COMMISSIONING**  
12/03/2018



# NEVŞEHİR

KARAPINAR SPP

2.138 kWp



**PROJECT'S INSTALLED CAPACITY**

AC: 1.920 kWe DC: 2.138,40 kWp



**ANNUAL ENERGY PRODUCTION**

3.609.500 kWh



**TOTAL NUMBER OF HOUSEHOLD CONSUMPTION UNITS EQUAL TO THE CAPACITY**

1.189 Households



**NUMBER OF PANELS USED**

7.920 Panels



**AMOUNT OF GREENHOUSE GAS EMISSIONS AVOIDED**

2.165.700 kg.



**DATE OF COMMISSIONING**

30/03/2018



# ESKİŞEHİR

KAVACIK SPP

1.600 kWp



**PROJECT'S INSTALLED CAPACITY**

AC: 1.400 kWe DC: 1.600 kWp



**ANNUAL ENERGY PRODUCTION**

2.267.900 kWh



**TOTAL NUMBER OF HOUSEHOLD CONSUMPTION UNITS EQUAL TO THE CAPACITY**

747 Households



**NUMBER OF PANELS USED**

4.000 Panels



**AMOUNT OF GREENHOUSE GAS EMISSIONS AVOIDED**

1.360.740 kg.



**DATE OF COMMISSIONING**

10/02/2021



# BALIKESİR

MARMARA ADALAR SPP

**1.140 kWp**



**PROJECT'S INSTALLED CAPACITY**  
AC: 999 kWe DC: 1.140 kWp



**ANNUAL ENERGY PRODUCTION**  
1.410.542 kWh



**TOTAL NUMBER OF HOUSEHOLD CONSUMPTION UNITS EQUAL TO THE CAPACITY**  
465 Households



**NUMBER OF PANELS USED**  
3.000 Panels



**AMOUNT OF GREENHOUSE GAS EMISSIONS AVOIDED**  
662.955 kg.



**DATE OF COMMISSIONING**  
19/12/2020



# AFYONKARAHİSAR

GAZLIGÖL SPP

**1.069 kWp**



**PROJECT'S INSTALLED CAPACITY**  
AC: 986 kWe DC: 1.069,20 kWp



**ANNUAL ENERGY PRODUCTION**  
1.442.700 kWh



**TOTAL NUMBER OF HOUSEHOLD CONSUMPTION UNITS EQUAL TO THE CAPACITY**  
475 Households



**NUMBER OF PANELS USED**  
3.960 Panels



**AMOUNT OF GREENHOUSE GAS EMISSIONS AVOIDED**  
865.620 kg.



**DATE OF COMMISSIONING**  
18/01/2018



# ADANA

## ÖZBALTU SPP

### 249 kWp



**PROJECT'S INSTALLED CAPACITY**  
AC: 240 kWe DC: 249,48 kWp



**ANNUAL ENERGY PRODUCTION**  
339.900kWh



**TOTAL NUMBER OF HOUSEHOLD CONSUMPTION UNITS EQUAL TO THE CAPACITY**  
112 Households



**NUMBER OF PANELS USED**  
924 Panels



**AMOUNT OF GREENHOUSE GAS EMISSIONS AVOIDED**  
203.940 kg.



**DATE OF COMMISSIONING**  
03/09/2018



# MUĞLA

## ÇAVUŞ ADASI RADAR VE GÖZLEM İSTASYONU SPP

### 117 kWp



**PROJECT'S INSTALLED CAPACITY**  
AC: 60 kWe DC: 116,64 kWp



**ANNUAL ENERGY PRODUCTION**  
126.144 kWh



**TOTAL NUMBER OF HOUSEHOLD CONSUMPTION UNITS EQUAL TO THE CAPACITY**  
44 Households



**NUMBER OF PANELS USED**  
432 Panels



**AMOUNT OF GREENHOUSE GAS EMISSIONS AVOIDED**  
75.686 kg.



**DATE OF COMMISSIONING**  
02/09/2018



# MANİSA

KÜTAŞ TARIM SPP

240 kWp



**PROJECT'S INSTALLED CAPACITY**  
AC: 240 kWe DC: 240 kWp



**ANNUAL ENERGY PRODUCTION**  
366.616 kWh



**TOTAL NUMBER OF HOUSEHOLD CONSUMPTION UNITS EQUAL TO THE CAPACITY**  
121 Households



**NUMBER OF PANELS USED**  
534 Panels



**AMOUNT OF GREENHOUSE GAS EMISSIONS AVOIDED**  
219.970 kg.



**DATE OF COMMISSIONING**  
07/06/2022



# AKSARAY

BİYOSAN SPP

2.399 kWp



**PROJECT'S INSTALLED CAPACITY**  
AC: 2.399 kWe DC: 2.399 kWp



**ANNUAL ENERGY PRODUCTION**  
3.872.000 kWh



**TOTAL NUMBER OF HOUSEHOLD CONSUMPTION UNITS EQUAL TO THE CAPACITY**  
1.275 Households



**NUMBER OF PANELS USED**  
5.760 Panels



**AMOUNT OF GREENHOUSE GAS EMISSIONS AVOIDED**  
2.323.200 kg.



**DATE OF COMMISSIONING**  
26/01/2023









# ONGOING PROJECTS



# İZMİR

## VE-GE KAĞIT SPP

### 2.547 kWp

PROJECT'S INSTALLED AC POWER: 1.998 kWp  
NUMBER OF PANELS USED: 5.598 Panel



# GAZİANTEP

## HUZUR TEL SPP

### 390 kWp

PROJECT'S INSTALLED AC POWER: 330 kWp  
NUMBER OF PANELS USED: 710 Panel



# GAZİANTEP

## ÇABUK AMBALAJ SPP

### 2.431 kWp

PROJECT'S INSTALLED AC POWER: 2.000 kWp  
NUMBER OF PANELS USED: 4.466 Panel



# KAYSERİ

## ERCIYES BELLONA 6 SPP

### 3.880 kWp

PROJECT'S INSTALLED AC POWER: 2.400 kWp  
NUMBER OF PANELS USED: 7.120 Panel

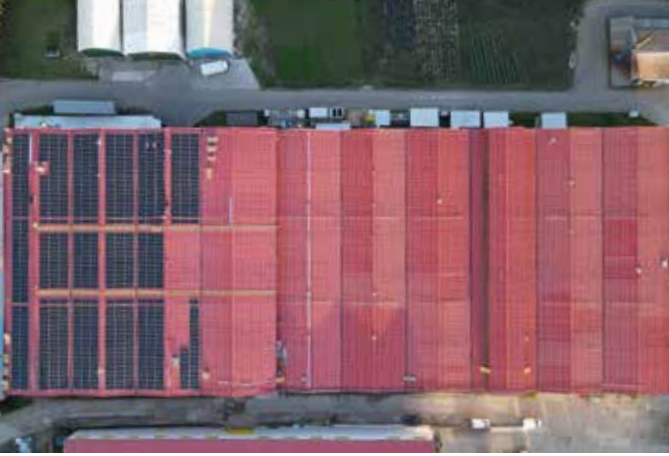


# İSTANBUL

## SERTPLAS SPP

### 1.298 kWp

PROJECT'S INSTALLED AC POWER: 990 kWe  
NUMBER OF PANELS USED: 2.853 Panel



# MALATYA

## İNTEM TRIKO SPP

### 3.882 kWp

PROJECT'S INSTALLED AC POWER: 3.000 kWe  
NUMBER OF PANELS USED: 8.532 Panel



# KAYSERİ

## ERÇİYES BELLONA PAZARLAMA SPP

### 388 kWp

PROJECT'S INSTALLED AC POWER: 240 kWe  
NUMBER OF PANELS USED: 720 Panel



# UŞAK

## KYÇ 1 TEKSTİL SPP

### 1.100 kWp

PROJECT'S INSTALLED AC POWER: 867 kWe  
NUMBER OF PANELS USED: 2.418 Panel



## KÜTAHYA

NG KÜTAHYA SERAMİK 2 SPP  
**18.720 kWp**

PROJECT'S INSTALLED AC POWER: 16.000 kWe  
NUMBER OF PANELS USED: 40.142 Panel



## MERSİN

SERTEL VİDA SPP  
**7.004 kWp**

PROJECT'S INSTALLED AC POWER: 5.390 kWe  
NUMBER OF PANELS USED: 15.394 Panel



## AKSARAY

MERCEDES BENZ 1 SPP  
**6.195 kWp**

PROJECT'S INSTALLED AC POWER: 5.000 kWe  
NUMBER OF PANELS USED: 13.616 Panel



## İZMİR

JTI TÜTÜN SPP  
**5.690 kWp**

PROJECT'S INSTALLED AC POWER: 4.400,00 kWe  
NUMBER OF PANELS USED: 10.346 Panel



## YOZGAT

GEDAŞ GENEL GIDA SPP

**4.251 kWp**

PROJECT'S INSTALLED AC POWER: 3.300 kWe

NUMBER OF PANELS USED: 9.342 Panel



## UŞAK

ÖZEĞE TEKSTİL 2 SPP

**3.649 kWp**

PROJECT'S INSTALLED AC POWER: 2.860 kWe

NUMBER OF PANELS USED: 6.696 Panel



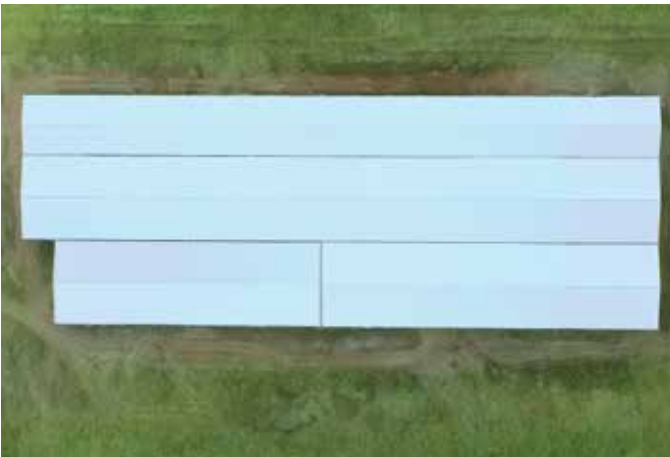
## KÜTAHYA

GEPA İPLİK SPP

**1.385 kWp**

PROJECT'S INSTALLED AC POWER: 1.100 kWe

NUMBER OF PANELS USED: 3.044 Panel



## TRABZON

GÜNDOĞDU MOBİLYA SPP

**1.889 kWp**

PROJECT'S INSTALLED AC POWER: 1.500 kWe

NUMBER OF PANELS USED: 4.152 Panel



## BİLECİK

HEPŞEN METAL SPP

**1.515 kWp**

PROJECT'S INSTALLED AC POWER: 1.200 kWe

NUMBER OF PANELS USED: 3.330 Panel



## KOCAELİ

CPS PRESSFORM SPP

**1.099 kWp**

PROJECT'S INSTALLED AC POWER: 900 kWe

NUMBER OF PANELS USED: 2.416 Panel



## AKSARAY

MERCEDES BENZ 2 SPP

**1.273 kWp**

PROJECT'S INSTALLED AC POWER: 1.000 kWe

NUMBER OF PANELS USED: 2.798 Panel



## ADANA

EPAŞ DÖKÜM SPP

**1.249 kWp**

PROJECT'S INSTALLED AC POWER: 1.000 kWe

NUMBER OF PANELS USED: 2.746 Panel



## SİVAS

YÖ-RE KÖMÜR SPP

**52 kWp**

PROJECT'S INSTALLED AC POWER: 40 kWe

NUMBER OF PANELS USED: 110 Panel



## ORDU

BELFOR TEKSTİL SPP

**278 kWp**

PROJECT'S INSTALLED AC POWER: 220 kWe

NUMBER OF PANELS USED: 591 Panel



## ADANA

ÖZ-ÖKMENLER SPP

**952 kWp**

PROJECT'S INSTALLED AC POWER: 770 kWe

NUMBER OF PANELS USED: 2.092 Panel



## BATMAN

MSA PLASTİK (AVCU BORU) SPP

**860 kWp**

PROJECT'S INSTALLED AC POWER: 800 kWe

NUMBER OF PANELS USED: 1.890 Panel



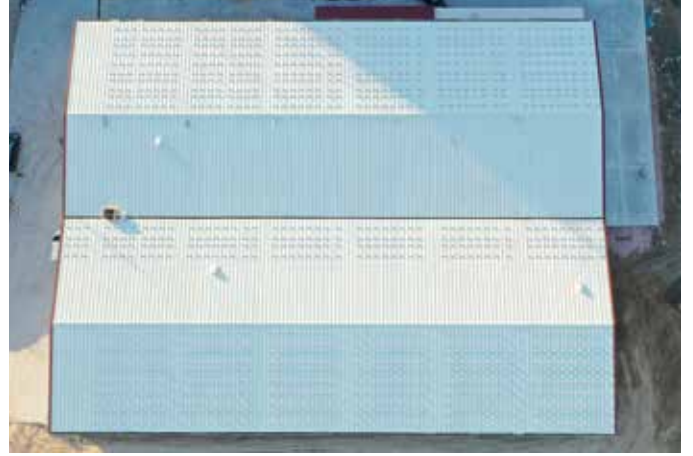
## **BOLU** ALPPLAS SPP **787 kWp**

**PROJECT'S INSTALLED AC POWER: 600 kWe**  
**NUMBER OF PANELS USED: 1.730 Panel**



## **KÜTAHYA** BARON ÇORAP SPP **501 kWp**

**PROJECT'S INSTALLED AC POWER: 400 kWe**  
**NUMBER OF PANELS USED: 1.102 Panel**



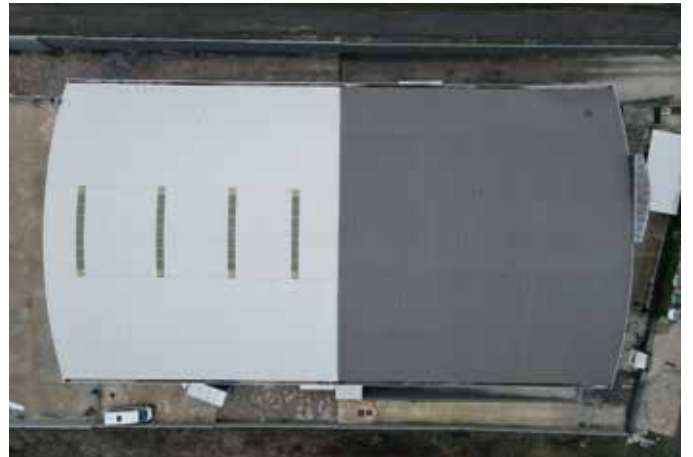
## **KÜTAHYA** DOĞUKAN GİPE İPLİK SPP **501 kWp**

**PROJECT'S INSTALLED AC POWER: 400 kWe**  
**NUMBER OF PANELS USED: 1.102 Panel**



## **İSTANBUL** SERİN CİVATA SPP **480 kWp**

**PROJECT'S INSTALLED AC POWER: 330 kWe**  
**NUMBER OF PANELS USED: 1.056 Panel**





## ADANA

ADAWALL 2 SPP

**407 kWp**

PROJECT'S INSTALLED AC POWER: 330 kWe

NUMBER OF PANELS USED: 895 Panel



## MALATYA

YİĞİTLER OTOMOTİV SPP

**402 kWp**

PROJECT'S INSTALLED AC POWER: 330 kWe

NUMBER OF PANELS USED: 935 Panel



# ONGOING WPP PROJECTS





**BİNGÖL**  
METAFOR WPP  
**49,7 MW**  
NUMBER OF  
TURBINESİ: 12



**AĞRI**  
YAKAAGZI WPP  
**33,6 MW**  
NUMBER OF  
TURBINESİ: 8

## ÇANKIRI

ÇERKEŞ WPP

**50,4 MW**

NUMBER OF  
TURBINES: 12



## SİNOP

FENER WPP

**4,2 MW**

NUMBER OF  
TURBINES: 1





**SİNOP**  
HAMSİ WPP  
**37,8 MW**  
NUMBER OF  
TURBINESİ: 9



**KOCAELİ**  
KARAMÜRSEL WPP  
**33,6 MW**  
NUMBER OF TURBINESİ: 8



# ONGOING BPP PROJECTS





# AKSARAY

## BIOENERGY PLANT (BPP+SPP HYBRID)

### 19.199 kWp



**BPP PROJECT POWER**  
AC: 16.000 kWe DC: 16.800 kWp



**SPP PROJECT POWER**  
AC: 2.399 kWe DC: 2.399 kWp



**ANNUAL ENERGY PRODUCTION**  
132.000.000 kWh



**TOTAL NUMBER OF HOUSEHOLD CONSUMPTION UNITS EQUAL TO THE CAPACITY**  
45.000 Hane



**NUMBER OF PANELS USED**  
5.760 Panel



**NUMBER OF STEAM BOILER USED**  
3 Adet.



**NUMBER OF STEAM TURBINE USED**  
3 Adet.



**AMOUNT OF GREENHOUSE GAS EMISSIONS AVOIDED**  
62.029.877 kg.





In our power plant; There will be many structures such as water treatment plant, cooling towers, analysis laboratories. Our facility will be built on 200+200 total 400 decares of land. It will be put into operation in a closed area of 20.000 m2 together with 12 decares of closed fuel stock area, boiler-turbine and auxiliary operation buildings.



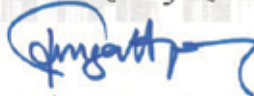
# Yetki Belgesi

GÖKTEKİN ENERJİ ANONİM ŞİRKETİ

18 Nisan 2007 tarihli ve 5627 sayılı 'Enerji Verimliliği Kanunu ve 27 Ekim 2011 tarihli ve 28097 sayılı Resmi Gazete'de yayımlanan 'Enerji Kaynaklarının ve Enerjinin Kullanımında Verimliliğin Artırılmasına Dair Yönetmelik' kapsamında; enerji verimliliği alanında **Etüt, Proje ve Danışmanlık** Hizmetleri vermek üzere 30/12/2026 tarihine kadar yetkilendirilmiştir.

BELGE NO: OKU-EVD-002



  
Prof. Dr. Turgay UZUN  
Rektör

  
Dr. Abdullahi Bujrahan KARAVELİ  
Bakan a.  
EVÇED Başkanı



**BQS**

# SERTİFİKA

Bu Sertifika,

**GÖKTEKİN ENERJİ ANONİM ŞİRKETİ**

Belediye Evleri Mahallesi 84249 Sokak Panorama Evleri Ç/Blok ZE Çukurova/ADANA

kuruluşunun,

**Enerji Sistemleri ve Enerji Verimliliği Danışmanlığı, Enerji Sistemleri Kurulumu ve Servis (Bakım ve Onarım) Hizmetleri**

EA 19-28-34 kapsamında,

## TS EN ISO 9001:2015

Kalite Yönetim Sistemi Standardının şartlarına uygun bir yönetim sistemi kuruluşunu ve uyguladığını onaylamak üzere verilmiştir.

İlk Yayın Tarihi : 12.03.2016  
Belge Tarihi : 26.03.2022  
Belge Periyodu : 3 Yıl  
Bilgi Tarihi : 11.03.2023  
Sertifika No : IQ.2022.732

**Best Quality Services**  
Sertifika Onay

**IAF** **TÜRKAKB**

**BQS**  
BEST QUALITY SERVICES

**BQS Belgelendirme ve Eğitim Hizmetleri Ltd. Şti.**  
Nispetiye Mahallesi 1937 Sokak No:21 Nispetiye Kavşağı E Blok Kat: 2  
Çukurova/Adana/Türkiye  
Tel: 0312 259 41 21 Fax: 0312 259 41 22 E-mail: [info@bqs.com.tr](mailto:info@bqs.com.tr)

**BQS**

# SERTİFİKA

Bu Sertifika,

**GÖKTEKİN ENERJİ ANONİM ŞİRKETİ**

Belediye Evleri Mahallesi 84249 Sokak Panorama Evleri Ç/Blok ZE Çukurova/ADANA

kuruluşunun,

**Enerji Sistemleri ve Enerji Verimliliği Danışmanlığı, Enerji Sistemleri Kurulumu ve Servis (Bakım ve Onarım) Hizmetleri**

EA 19-28-34 kapsamında,

## TS EN ISO 14001:2015

Çevre Yönetim Sistemi Standardının şartlarına uygun bir yönetim sistemi kuruluşunu ve uyguladığını onaylamak üzere verilmiştir.

İlk Yayın Tarihi : 12.03.2016  
Belge Tarihi : 26.03.2022  
Belge Periyodu : 3 Yıl  
Bilgi Tarihi : 11.03.2023  
Sertifika No : CE.2022.732

**Best Quality Services**  
Sertifika Onay

**IAF** **TÜRKAKB**

**BQS**  
BEST QUALITY SERVICES

**BQS Belgelendirme ve Eğitim Hizmetleri Ltd. Şti.**  
Nispetiye Mahallesi 1937 Sokak No:21 Nispetiye Kavşağı E Blok Kat: 2  
Çukurova/Adana/Türkiye  
Tel: 0312 259 41 21 Fax: 0312 259 41 22 E-mail: [info@bqs.com.tr](mailto:info@bqs.com.tr)

**ASCERT**  
Certification

# SERTİFİKA

Bu Sertifika,

**GÖKTEKİN ENERJİ ANONİM ŞİRKETİ**

Belediye Evleri Mahallesi 84249 Sokak Panorama Evleri Sitei C Blok No:2/E  
Çukurova/ADANA

kuruluşunun,

**Enerji Sistemleri ve Enerji Verimliliği Danışmanlığı, Enerji Sistemleri Kurulumu ve Servis (Bakım ve Onarım) Hizmetleri**

kapsamında,

## ISO 10002:2018

Müşteri Memnuniyeti ve Şikayeti Yönetim Sistemi Standardının şartlarına uygun bir sistem kuruluşunu ve uyguladığını onaylamak üzere verilmiştir.

İlk Yayın Tarihi : 26.03.2022  
Belge Tarihi : 26.03.2022  
Belge Periyodu : 3 Yıl  
Sertifika Bilgi Tarihi : 25.03.2023  
Sertifika No : HC.2022.2538

**Ascet Certification**  
Sertifika Onay

**ASCERT**  
CERTIFICATION

**ISO 10002**

**ASCERT BELGELENDİRME VE EĞİTİM HİZMETLERİ LİMİTED ŞİRKETİ**  
Nispetiye Mahallesi 1937 Sokak No:21 Nispetiye Kavşağı E Blok Kat: 2 Çukurova/Adana/Türkiye  
Tel: 0312 259 41 21 Fax: 0312 259 41 22 E-mail: [info@ascert.com.tr](mailto:info@ascert.com.tr)  
Bu sertifikayı yayınladığımız sitede [www.ascert.com.tr](http://www.ascert.com.tr) adresinden kontrol edebilirsiniz.

**BQS**

# SERTİFİKA

Bu Sertifika,

**GÖKTEKİN ENERJİ ANONİM ŞİRKETİ**

Belediye Evleri Mahallesi 84249 Sokak Panorama Evleri Ç/Blok ZE Çukurova/ADANA

kuruluşunun,

**Enerji Sistemleri ve Enerji Verimliliği Danışmanlığı, Enerji Sistemleri Kurulumu ve Servis (Bakım ve Onarım) Hizmetleri**

kapsamında,

## ISO 45001:2018

İş Sağlığı ve Güvenliği Yönetim Sistemi Standardının şartlarına uygun bir yönetim sistemi kuruluşunu ve uyguladığını onaylamak üzere verilmiştir.

İlk Yayın Tarihi : 12.03.2016  
Belge Tarihi : 26.03.2022  
Belge Periyodu : 3 Yıl  
Bilgi Tarihi : 11.03.2023  
Sertifika No : IS.2022.732

**Best Quality Services**  
Sertifika Onay

**BQS**  
BEST QUALITY SERVICES

**ISO 45001**

**BQS Belgelendirme ve Eğitim Hizmetleri Ltd. Şti.**  
Nispetiye Mahallesi 1937 Sokak No:21 Nispetiye Kavşağı E Blok Kat: 2  
Çukurova/Adana/Türkiye  
Tel: 0312 259 41 21 Fax: 0312 259 41 22 E-mail: [info@bqs.com.tr](mailto:info@bqs.com.tr)



#### ADANA - HEAD OFFICE

Belediye Evleri Mah. 84249 Sok. No:2-E Çukurova/ADANA  
+90 322 248 47 00

#### İSTANBUL - MARMARA REGIONAL OFFICE

Zorlu Center, Levazım Mah. Kuru Sok. No:2 Teras Evler Daire:24 Beşiktaş/İSTANBUL  
+90 212 823 37 00

#### İZMİR - AEGEAN REGIONAL OFFICE

Ege Perla İş Kulesi. Çınarlı Mah. Ozan Abay Cad. No:10 Kat:1 Daire:13 Konak/İZMİR  
+90 232 388 87 77

#### ANKARA - CENTRAL ANATOLIA REGIONAL OFFICE

Next Level Loft Ofis Kızıllırmak Mah. Ufuk Üniv. Cad. No:4 Kat:9 Daire:30 Çankaya/ANKARA  
+90 312 557 55 58



444 3 GES

goktekinenerji.com

info@goktekinenerji.com